



## UK Office

### Everest Biotech Ltd

Cherwell Innovation Centre  
77 Heyford Park  
Upper Heyford  
Oxfordshire  
OX25 5HD  
UK

Enquiries:

[info@everestbiotech.com](mailto:info@everestbiotech.com)

Sales:

[sales@everestbiotech.com](mailto:sales@everestbiotech.com)

Tech support:

[support@everestbiotech.com](mailto:support@everestbiotech.com)

Tel: +44 (0)1869 238326

Fax: +44 (0)1869 238327

## US Office

### Everest Biotech c/o Abcore

405 Maple Street, Suite A106  
Ramona,  
CA 92065  
USA

Inquiries:

[info@everestbiotech.com](mailto:info@everestbiotech.com)

Sales:

[usasales@everestbiotech.com](mailto:usasales@everestbiotech.com)

Tech support:

[support@everestbiotech.com](mailto:support@everestbiotech.com)

Tel: 888-320-4628 (toll-free)

Fax: 888-841-9041

[www.everestbiotech.com](http://www.everestbiotech.com)

**Research Use Only. Not for  
diagnostic or therapeutic use.**

## EB08194 - Goat Anti-CADM4 (C Terminus) Antibody

Size: 100µg specific antibody in 200µl



### Target Protein

**Principal Names:** CADM4, cell adhesion molecule 4, IGSF4C, Necl-4, TSLL2, synCAM4, TSLC1-like 2, immunoglobulin superfamily, member 4C, nectin-like 4

**Official Symbol:** CADM4

**Accession Number(s):** NP\_660339.1

**Human GeneID(s):** [199731](#)

### Immunogen

Peptide with sequence C-REAFLNGSDGHRKE, from the C Terminus of the protein sequence according to NP\_660339.1.

Please note the [peptide](#) is available for sale.

### Purification and Storage

Purified from goat serum by ammonium sulphate precipitation followed by antigen affinity chromatography using the immunizing peptide.

Supplied at 0.5 mg/ml in Tris saline, 0.02% sodium azide, pH7.3 with 0.5% bovine serum albumin.

Aliquot and store at -20°C. Minimize freezing and thawing.

### Applications Tested

**Peptide ELISA:** antibody detection limit dilution 1:32000.

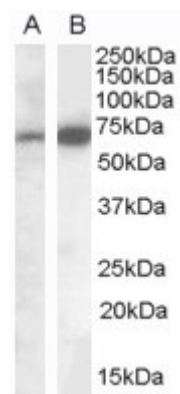
**Western blot:** Approx 70kDa band observed in Human Brain (Cerebellum) lysates (calculated MW of 42.8kDa according to NP\_660339.1). The observed molecular weight corresponds to findings with EB08040, a product of different design reacting to a different part of the same protein. Recommended concentration: 0.03-0.1µg/ml. Primary incubation was 1 hour.

**IHC:** Paraffin embedded Human Spleen and Liver. Recommended concentration: 2.5µg/ml.

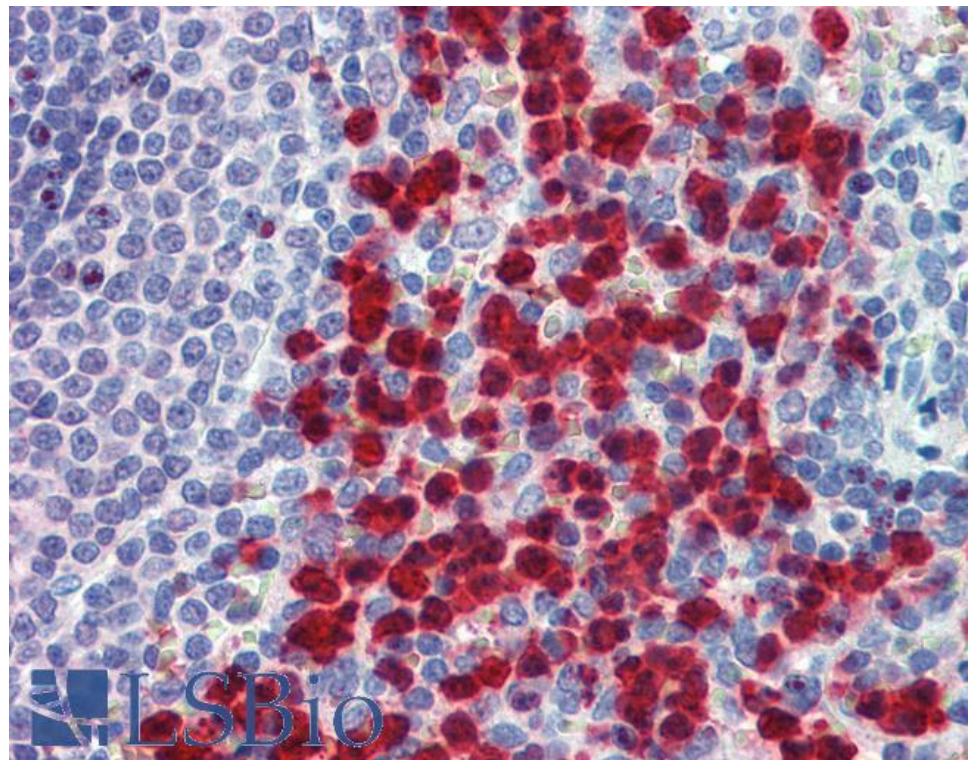
### Species Reactivity

**Tested:** Human

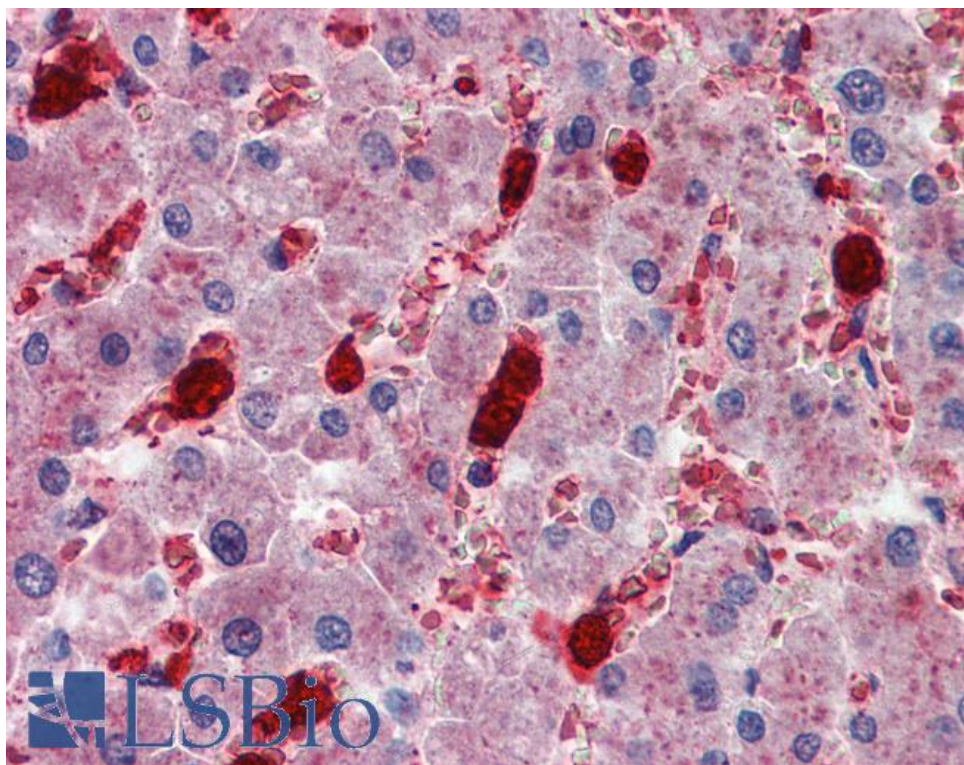
**Expected from sequence similarity:** Human, Mouse, Rat, Dog



Staining of Human Brain (Cerebellum) lysate (35µg protein in RIPA buffer). A) EB08040 (0.1µg/ml) and B) EB08194 (0.05µg/ml). Detected by chemiluminescence.



EB08194 (2.5µg/ml) staining of paraffin embedded Human Spleen. Steamed antigen retrieval with citrate buffer pH 6, AP-staining.



EB08194 (2.5µg/ml) staining of paraffin embedded Human Liver. Steamed antigen retrieval with citrate buffer pH 6, AP-staining.