

## UK Office

### Everest Biotech Ltd

Cherwell Innovation Centre  
77 Heyford Park  
Upper Heyford  
Oxfordshire  
OX25 5HD  
UK

Enquiries:

[info@everestbiotech.com](mailto:info@everestbiotech.com)

Sales:

[sales@everestbiotech.com](mailto:sales@everestbiotech.com)

Tech support:

[support@everestbiotech.com](mailto:support@everestbiotech.com)

Tel: +44 (0)1869 238326

[www.everestbiotech.com](http://www.everestbiotech.com)

**Research Use Only. Not for  
diagnostic or therapeutic use.**

## EB11759 - Goat Anti-calbindin D28 Antibody

Size: 100µg specific antibody in 200µl



### Target Protein

**Principal Names:** CALB, CALB1, calbindin, calbindin 1, (28kD), calbindin 1, 28kDa, calbindin D28, D-28K, OTTHUMP00000166027, OTTHUMP00000225441, RTVL-H protein, vitamin D-dependent calcium-binding protein, avian-type

**Official Symbol:** CALB1

**Accession Number(s):** NP\_004920.1

**Human GeneID(s):** [793](#)

**Non-Human GeneID(s):** 83839 (rat)

**Important Comments:** Immunizing peptide overlaps EF hand 2, but not any calcium binding site.

### Immunogen

Peptide with sequence C-KTFVDQYGRDDGK, from the internal region of the protein sequence according to NP\_004920.1.

Please note the [peptide](#) is available for sale.

### Purification and Storage

Purified from goat serum by ammonium sulphate precipitation followed by antigen affinity chromatography using the immunizing peptide.

Supplied at 0.5 mg/ml in Tris saline, 0.02% sodium azide, pH7.3 with 0.5% bovine serum albumin.

Aliquot and store at -20°C. Minimize freezing and thawing.

### Applications Tested

**Peptide ELISA:** antibody detection limit dilution 1:128000.

**Western blot:** Approx. 26kDa band observed in Human and Rat Kidney lysates and in Rat Brain lysates (calculated MW of 30.0kDa according to Human NP\_004920.1 and Rat NP\_114190.1). The observed molecular weight is routinely observed by other sources. Recommended concentration: 0.1-0.3µg/ml. Primary incubation 1 hour at room temperature.

**IHC:** Paraffin embedded Human Kidney. Recommended concentration: 5-7µg/ml.

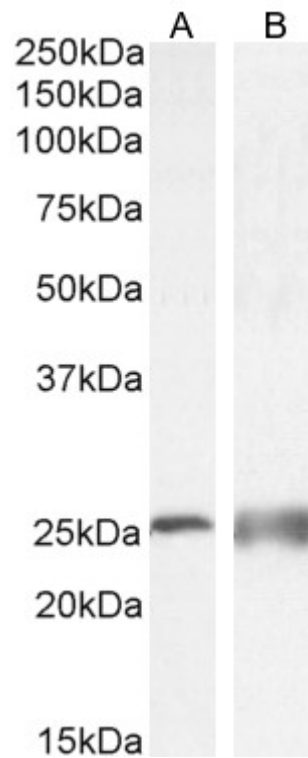
### Species Reactivity

**Tested:** Human, Rat

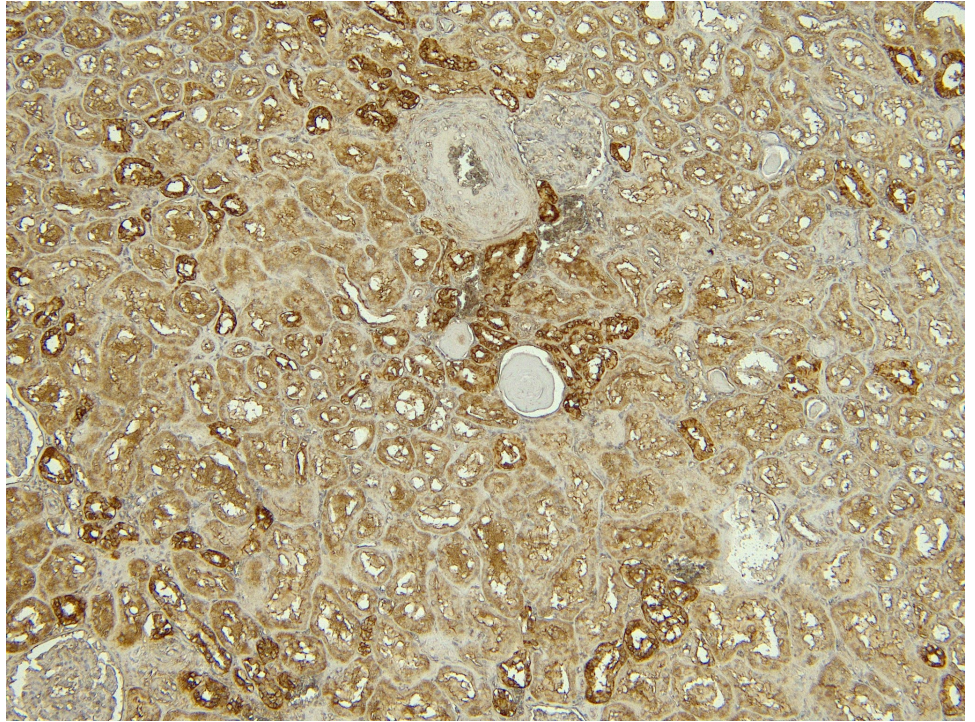
**Expected from sequence similarity:** Human, Rat, Dog, Pig, Cow



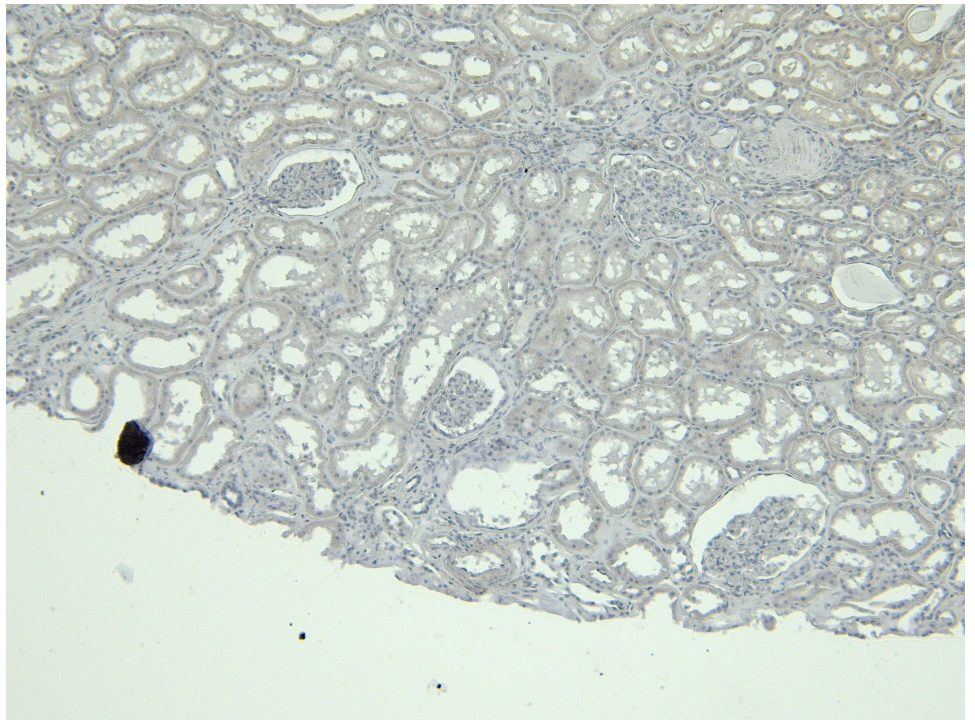
EB11759 (0.3 $\mu$ g/ml) staining of Human Kidney lysate, (35 $\mu$ g protein in RIPA buffer). Detected by chemiluminescence.



EB11759 (0.3 $\mu$ g/ml) staining of Rat Brain (A) and (0.1 $\mu$ g/ml) Kidney (B) lysate, (35 $\mu$ g protein in RIPA buffer). Detected by chemiluminescence.



EB11759 (5 $\mu$ g/ml) staining of paraffin embedded Human Kidney. Heat induced antigen retrieval with citrate buffer pH 6, HRP-staining.



EB11759 Negative Control showing staining of paraffin embedded Human Kidney, with no primary antibody.