



UK Office

Everest Biotech Ltd

Cherwell Innovation Centre
77 Heyford Park
Upper Heyford
Oxfordshire
OX25 5HD
UK

Enquiries:

info@everestbiotech.com

Sales:

sales@everestbiotech.com

Tech support:

support@everestbiotech.com

Tel: +44 (0)1869 238326

Fax: +44 (0)1869 238327

US Office

Everest Biotech c/o Abcore

405 Maple Street, Suite A106
Ramona,
CA 92065
USA

Inquiries:

info@everestbiotech.com

Sales:

usasales@everestbiotech.com

Tech support:

support@everestbiotech.com

Tel: 888-320-4628 (toll-free)

Fax: 888-841-9041

www.everestbiotech.com

**Research Use Only. Not for
diagnostic or therapeutic use.**

EB11759 - Goat Anti-calbindin D28 Antibody

Size: 100µg specific antibody in 200µl



Target Protein

Principal Names: CALB, CALB1, calbindin, calbindin 1, (28kD), calbindin 1, 28kDa, calbindin D28, D-28K, OTTHUMP00000166027, OTTHUMP00000225441, RTVL-H protein, vitamin D-dependent calcium-binding protein, avian-type

Official Symbol: CALB1

Accession Number(s): NP_004920.1

Human GeneID(s): [793](#)

Non-Human GeneID(s): 83839 (rat)

Important Comments: Immunizing peptide overlaps EF hand 2, but not any calcium binding site.

Immunogen

Peptide with sequence C-KTFVDQYGQRDDGK, from the internal region of the protein sequence according to NP_004920.1.

Please note the [peptide](#) is available for sale.

Purification and Storage

Purified from goat serum by ammonium sulphate precipitation followed by antigen affinity chromatography using the immunizing peptide.

Supplied at 0.5 mg/ml in Tris saline, 0.02% sodium azide, pH7.3 with 0.5% bovine serum albumin.

Aliquot and store at -20°C. Minimize freezing and thawing.

Applications Tested

Peptide ELISA: antibody detection limit dilution 1:128000.

Western blot: Approx. 26kDa band observed in Human and Rat Kidney lysates and in Rat Brain lysates (calculated MW of 30.0kDa according to Human NP_004920.1 and Rat NP_114190.1). The observed molecular weight is routinely observed by other sources. Recommended concentration: 0.1-0.3µg/ml. Primary incubation 1 hour at room temperature.

IHC: Paraffin embedded Human Kidney. Recommended concentration: 5-7µg/ml.

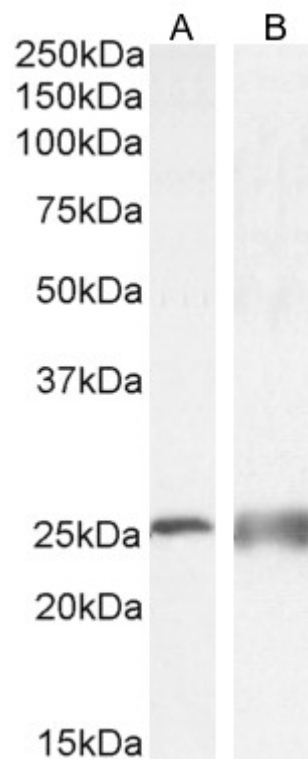
Species Reactivity

Tested: Human, Rat

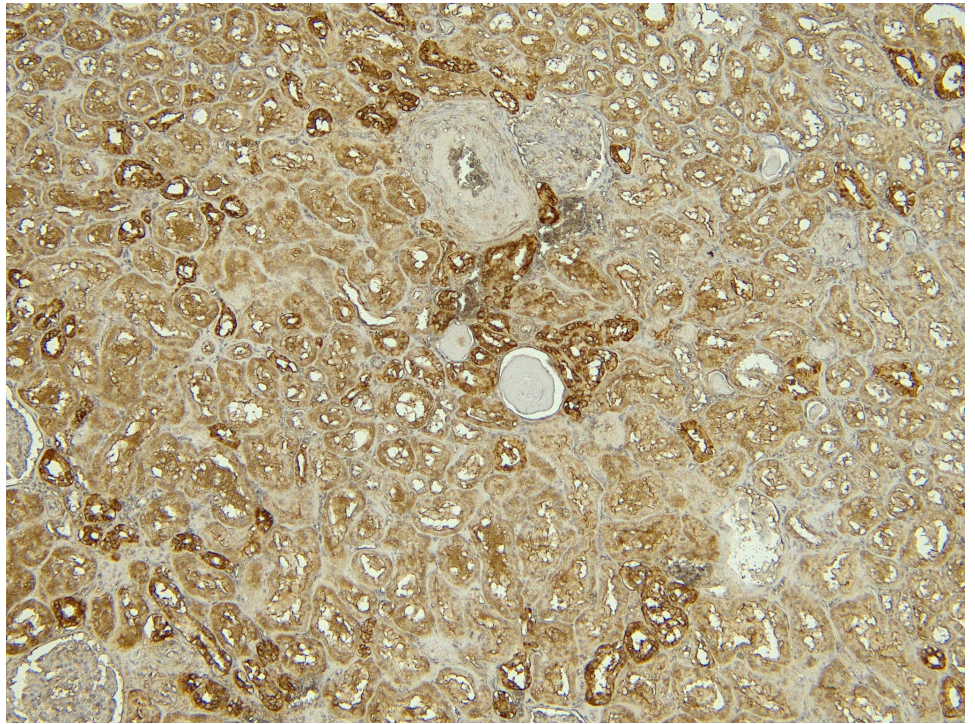
Expected from sequence similarity: Human, Rat, Dog, Pig, Cow



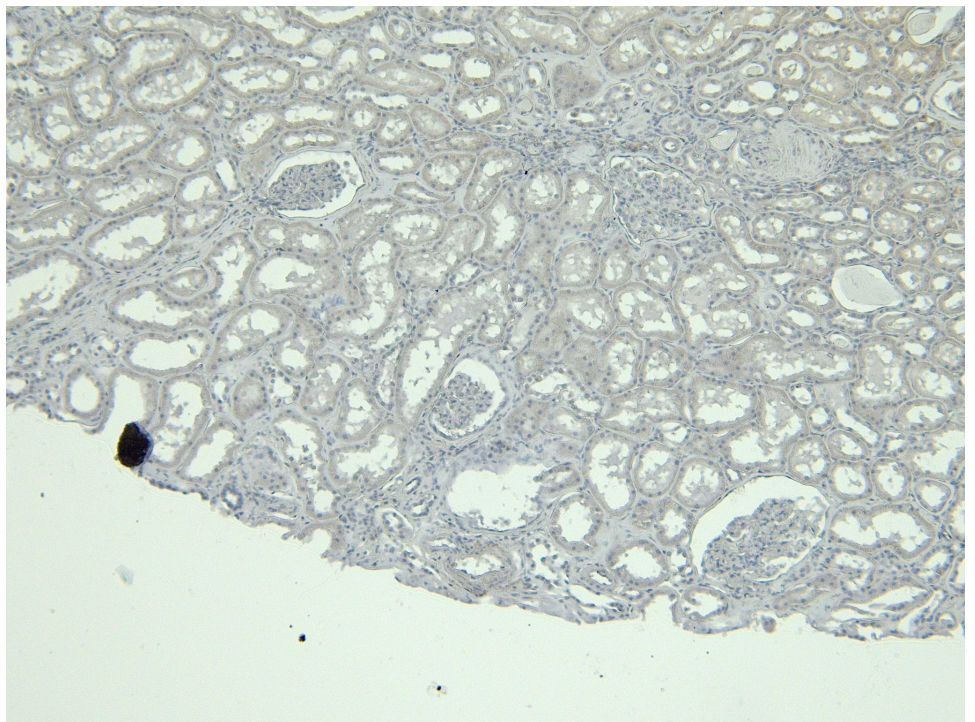
EB11759 (0.3 μ g/ml) staining of Human Kidney lysate, (35 μ g protein in RIPA buffer). Detected by chemiluminescence.



EB11759 (0.3 μ g/ml) staining of Rat Brain (A) and (0.1 μ g/ml) Kidney (B) lysate, (35 μ g protein in RIPA buffer). Detected by chemiluminescence.



EB11759 (5 μ g/ml) staining of paraffin embedded Human Kidney. Heat induced antigen retrieval with citrate buffer pH 6, HRP-staining.



EB11759 Negative Control showing staining of paraffin embedded Human Kidney, with no primary antibody.