

**Research Use Only. Not for diagnostic or therapeutic use.**

Storage: For long-term storage keep aliquots at -20°C. (Store no longer than 12 months at 4°C). Minimize freezing and thawing.

## EB05310 - Goat Anti-Calretinin Antibody

Size: 100µg specific antibody in 200µl



### Target Protein

**Principal Names:** placental anticoagulant protein IV, lipocortin II, chromobindin 8, calpactin I heavy polypeptide, annexin II (lipocortin II calpactin I, heavy polypeptide), calpactin I, heavy polypeptide (p36), annexin II (lipocortin II), Annexin II (lipocortin I), lipocortin II, annexin II, PAP-IV, P36, ANX2L4, LPC2D, CAL1H, LPC2, LIP2, ANX2, annexin A2, ANXA2, Calretinin

**Official Symbol:** ANXA2

**Accession Number(s):** NP\_001002858.1; NP\_004030.1; NP\_001002857.1; NP\_001129487.1

**Human GeneID(s):** [302](#)

**Non-Human GeneID(s):** 12306 (mouse), 56611 (rat)

**Important Comments:** This antibody is expected to recognise both reported isoforms. NP\_004030.1, NP\_001002857.1 and NP\_001129487.1 are variants of isoform 2.

### Immunogen

Peptide with sequence STVHEILCKLSLEGD, from the N Terminus of the protein sequence according to NP\_001002858.1; NP\_004030.1; NP\_001002857.1; NP\_001129487.1.

Please note the [peptide](#) is available for sale.

### Purification and Storage

Purified from goat serum by ammonium sulphate precipitation followed by antigen affinity chromatography using the immunizing peptide.

Supplied at 0.5 mg/ml in Tris saline, 0.02% sodium azide, pH7.3 with 0.5% bovine serum albumin.

Aliquot and store at -20°C. Minimize freezing and thawing.

### Applications Tested

**Peptide ELISA:** antibody detection limit dilution 1:1000.

**Western blot:** Approx 35kDa band observed in lysates of cell lines A549, HeLa and NIH3T3 (calculated MW of 38.6kDa according to NP\_004030.1 and NP\_001002857.1).

Recommended concentration: 0.5-3µg/ml.

### Species Reactivity

**Tested:** Human, Mouse

**Expected from sequence similarity:** Human, Mouse, Rat, Cow, Pig

### Specific Reference

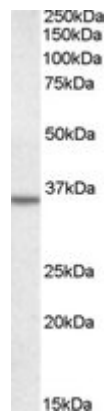
The goat polyclonal antibody used in this paper was manufactured by us:

Glebov OO, Bright NA, Nichols BJ.

Flotillin-1 defines a clathrin-independent endocytic pathway in mammalian cells.

Nat Cell Biol. 2006 Jan;8(1):46-54.

**PMID:** 16341206



EB05310 staining (0.5µg/ml) of A431 lysate (RIPA buffer, 35µg total protein per lane). Primary incubated for 1 hour. Detected by western blot using chemiluminescence.