

UK Office

Everest Biotech Ltd

Cherwell Innovation Centre
77 Heyford Park
Upper Heyford
Oxfordshire
OX25 5HD
UK

Enquiries:

info@everestbiotech.com

Sales:

sales@everestbiotech.com

Tech support:

support@everestbiotech.com

Tel: +44 (0)1869 238326

www.everestbiotech.com

**Research Use Only. Not for
diagnostic or therapeutic use.**

EB09204 - Goat Anti-CAMK1D Antibody

Size: 100µg specific antibody in 200µl



Target Protein

Principal Names: CAMK1D, calcium/calmodulin-dependent protein kinase, RP11-462F15.1, CKLiK, CaM-K1, CaMKiD, CaM kinase ID, CamKI-like protein kinase, OTTHUMP00000019119, OTTHUMP00000019120, OTTHUMP00000045030

Official Symbol: CAMK1D

Accession Number(s): NP_065130.1

Human GeneID(s): [57118](#)

Important Comments: This antibody is expected to recognize reported isoform 1 (NP_065130.1).

Immunogen

Peptide with sequence ASQKDCAYVAKPES, from the C Terminus of the protein sequence according to NP_065130.1.

Please note the [peptide](#) is available for sale.

Purification and Storage

Purified from goat serum by ammonium sulphate precipitation followed by antigen affinity chromatography using the immunizing peptide.

Supplied at 0.5 mg/ml in Tris saline, 0.02% sodium azide, pH7.3 with 0.5% bovine serum albumin.

Aliquot and store at -20°C. Minimize freezing and thawing.

Applications Tested

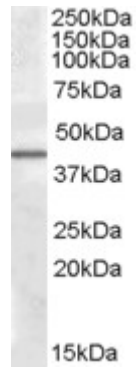
Peptide ELISA: antibody detection limit dilution 1:4000.

Western blot: Approx. 40kDa band observed in Human Liver lysates (calculated MW of 40.2kDa according to NP_065130.1). Recommended concentration: 1-3µg/ml.

Species Reactivity

Tested: Human

Expected from sequence similarity: Human



EB09204 (0.5µg/ml) staining of Human Liver lysate (35µg protein in RIPA buffer). Primary incubation was 1 hour.
Detected by chemiluminescence.