

UK Office

Everest Biotech Ltd

Cherwell Innovation Centre
77 Heyford Park
Upper Heyford
Oxfordshire
OX25 5HD
UK

Enquiries:

info@everestbiotech.com

Sales:

sales@everestbiotech.com

Tech support:

support@everestbiotech.com

Tel: +44 (0)1869 238326

www.everestbiotech.com

**Research Use Only. Not for
diagnostic or therapeutic use.**

EB12422 - Goat Anti-CAPG (aa205-217) Antibody

Size: 100µg specific antibody in 200µl



Target Protein

Principal Names: CAPG, capping protein (actin filament), gelsolin-like, AFCP, MCP, actin regulatory protein CAP-G, actin-regulatory protein CAP-G, gelsolin-like capping protein, macrophage capping protein, macrophage-capping protein

Official Symbol: CAPG

Accession Number(s): NP_001738.2

Human GeneID(s): [822](#)

Important Comments: This antibody is expected to recognize isoform 1 (NP_001738.2) only. Reported variants represent identical protein: NP_001243068.1, NP_001738.2.

Immunogen

Peptide with sequence C-KAQVEIVTDGEPP, from the internal region of the protein sequence according to NP_001738.2.

Please note the [peptide](#) is available for sale.

Purification and Storage

Purified from goat serum by ammonium sulphate precipitation followed by antigen affinity chromatography using the immunizing peptide.

Supplied at 0.5 mg/ml in Tris saline, 0.02% sodium azide, pH7.3 with 0.5% bovine serum albumin.

Aliquot and store at -20°C. Minimize freezing and thawing.

Applications Tested

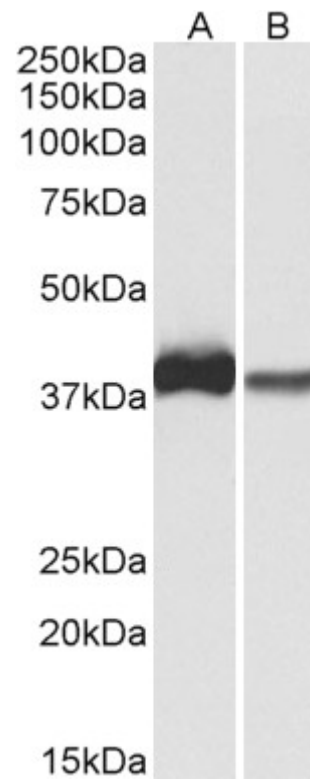
Peptide ELISA: antibody detection limit dilution 1:128000.

Western blot: Approx 38kDa band observed in lysates of cell line U937 and of Human, Mouse and Rat Spleen (calculated MW of 38.5kDa according to NP_001738.2). In Peripheral Blood Lymphocytes, the observed band runs as ~40kDa. Recommended concentration: 0.1-0.3µg/ml.

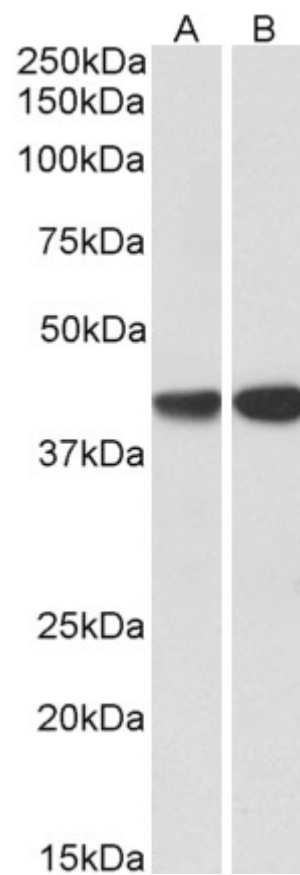
Species Reactivity

Tested: Human, Mouse, Rat, Pig

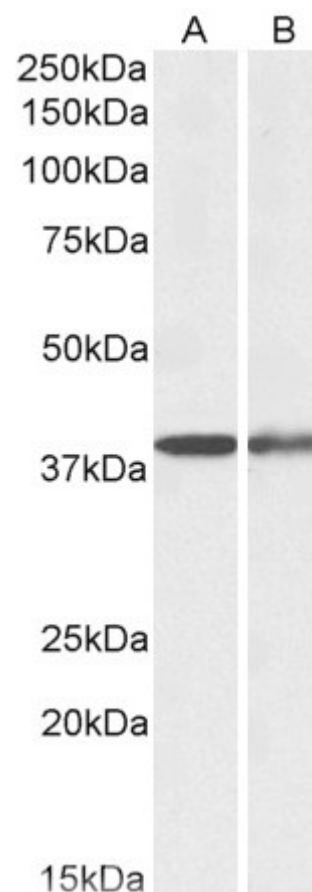
Expected from sequence similarity: Human, Dog, Pig



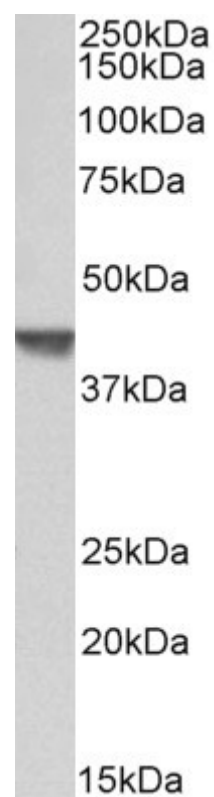
EB12422 (0.3 μ g/ml) staining of U937 (A) and Human Spleen (B) lysates (35 μ g protein in RIPA buffer). Primary incubation was 1 hour. Detected by chemiluminescence.



Anti-CAPG (0.3 μ g/ml) staining of Perihelal Blood Lymphocytes (EB12421 lane A), EB12422 lane B) lysates (35 μ g protein in RIPA buffer). Primary incubation was 1 hour. Detected by chemiluminescence.



EB12422 (0.1 μ g/ml) staining of Mouse (A) and Rat Spleen (B) lysates (35 μ g protein in RIPA buffer). Primary incubation was 1 hour. Detected by chemiluminescence.



EB12422 (0.3 μ g/ml) staining of Pig Spleen lysate (35 μ g protein in RIPA buffer). Primary incubation was 1 hour. Detected by chemiluminescence.