



## UK Office

### Everest Biotech Ltd

Cherwell Innovation Centre  
77 Heyford Park  
Upper Heyford  
Oxfordshire  
OX25 5HD  
UK

Enquiries:

[info@everestbiotech.com](mailto:info@everestbiotech.com)

Sales:

[sales@everestbiotech.com](mailto:sales@everestbiotech.com)

Tech support:

[support@everestbiotech.com](mailto:support@everestbiotech.com)

Tel: +44 (0)1869 238326

Fax: +44 (0)1869 238327

## US Office

### Everest Biotech c/o Abcore

405 Maple Street, Suite A106  
Ramona,  
CA 92065  
USA

Inquiries:

[info@everestbiotech.com](mailto:info@everestbiotech.com)

Sales:

[usasales@everestbiotech.com](mailto:usasales@everestbiotech.com)

Tech support:

[support@everestbiotech.com](mailto:support@everestbiotech.com)

Tel: 888-320-4628 (toll-free)

Fax: 888-841-9041

[www.everestbiotech.com](http://www.everestbiotech.com)

**Research Use Only. Not for  
diagnostic or therapeutic use.**

## EB12422 - Goat Anti-CAPG (aa205-217) Antibody

Size: 100µg specific antibody in 200µl



### Target Protein

**Principal Names:** CAPG, capping protein (actin filament), gelsolin-like, ACP, MCP, actin regulatory protein CAP-G, actin-regulatory protein CAP-G, gelsolin-like capping protein, macrophage capping protein, macrophage-capping protein

**Official Symbol:** CAPG

**Accession Number(s):** NP\_001738.2

**Human GeneID(s):** [822](#)

**Important Comments:** This antibody is expected to recognize isoform 1 (NP\_001738.2) only. Reported variants represent identical protein: NP\_001243068.1, NP\_001738.2.

### Immunogen

Peptide with sequence C-KAQVEIVTDGEEP, from the internal region of the protein sequence according to NP\_001738.2.

Please note the [peptide](#) is available for sale.

### Purification and Storage

Purified from goat serum by ammonium sulphate precipitation followed by antigen affinity chromatography using the immunizing peptide.

Supplied at 0.5 mg/ml in Tris saline, 0.02% sodium azide, pH7.3 with 0.5% bovine serum albumin.

Aliquot and store at -20°C. Minimize freezing and thawing.

### Applications Tested

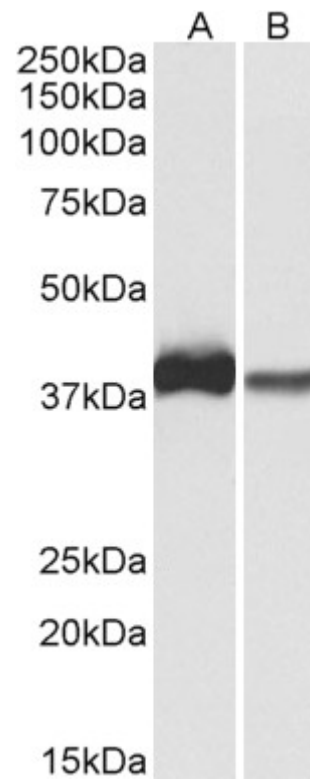
**Peptide ELISA:** antibody detection limit dilution 1:128000.

**Western blot:** Approx 38kDa band observed in lysates of cell line U937 and of Human, Mouse and Rat Spleen (calculated MW of 38.5kDa according to NP\_001738.2). In Peripheral Blood Lymphocytes, the observed band runs as ~40kDa. Recommended concentration: 0.1-0.3µg/ml.

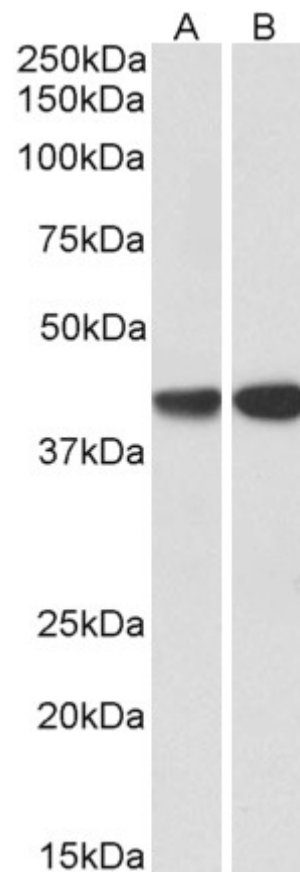
### Species Reactivity

**Tested:** Human, Mouse, Rat, Pig

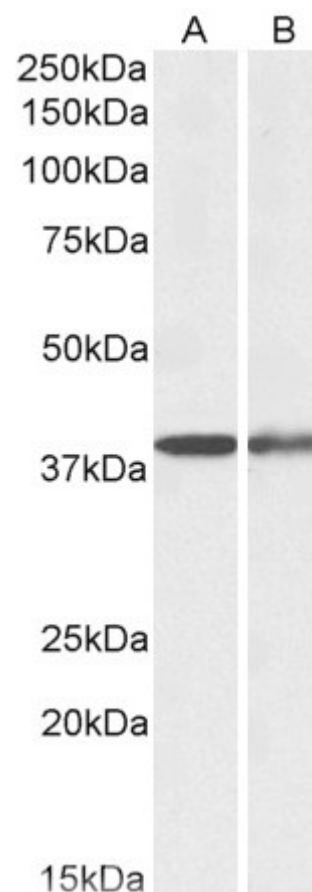
**Expected from sequence similarity:** Human, Dog, Pig



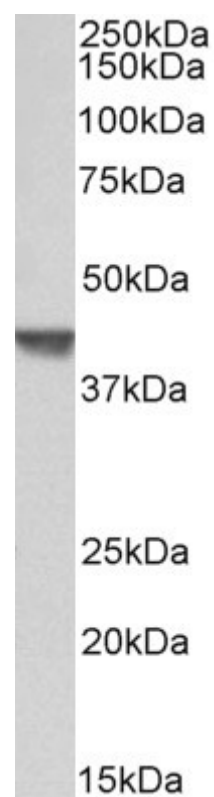
EB12422 (0.3 $\mu$ g/ml) staining of U937 (A) and Human Spleen (B) lysates (35 $\mu$ g protein in RIPA buffer). Primary incubation was 1 hour. Detected by chemiluminescence.



Anti-CAPG (0.3 $\mu$ g/ml) staining of Perihelal Blood Lymphocytes (EB12421 lane A), EB12422 lane B) lysates (35 $\mu$ g protein in RIPA buffer). Primary incubation was 1 hour. Detected by chemiluminescence.



EB12422 (0.1 $\mu$ g/ml) staining of Mouse (A) and Rat Spleen (B) lysates (35 $\mu$ g protein in RIPA buffer). Primary incubation was 1 hour. Detected by chemiluminescence.



EB12422 (0.3 $\mu$ g/ml) staining of Pig Spleen lysate (35 $\mu$ g protein in RIPA buffer). Primary incubation was 1 hour. Detected by chemiluminescence.