



UK Office

Everest Biotech Ltd

Cherwell Innovation Centre
77 Heyford Park
Upper Heyford
Oxfordshire
OX25 5HD
UK

Enquiries:

info@everestbiotech.com

Sales:

sales@everestbiotech.com

Tech support:

support@everestbiotech.com

Tel: +44 (0)1869 238326

Fax: +44 (0)1869 238327

US Office

Everest Biotech c/o Abcore

405 Maple Street, Suite A106
Ramona,
CA 92065
USA

Inquiries:

info@everestbiotech.com

Sales:

usasales@everestbiotech.com

Tech support:

support@everestbiotech.com

Tel: 888-320-4628 (toll-free)

Fax: 888-841-9041

www.everestbiotech.com

**Research Use Only. Not for
diagnostic or therapeutic use.**

EB12421 - Goat Anti-CAPG Antibody

Size: 100µg specific antibody in 200µl



Target Protein

Principal Names: CAPG, capping protein (actin filament), gelsolin-like, ACP, MCP, actin regulatory protein CAP-G, actin-regulatory protein CAP-G, gelsolin-like capping protein, macrophage capping protein, macrophage-capping protein

Official Symbol: CAPG

Accession Number(s): NP_001738.2; NP_001243069.1; NP_001307663.1

Human GeneID(s): [822](#)

Important Comments: This antibody is expected to recognize all reported isoform (NP_001738.2; NP_001243069.1, NP_001307663.1. Reported variants represent identical protein: NP_001243068.1, NP_001738.2.

Immunogen

Peptide with sequence C-NIRATERALNWDS, from the internal region of the protein sequence according to NP_001738.2; NP_001243069.1; NP_001307663.1.

Please note the [peptide](#) is available for sale.

Purification and Storage

Purified from goat serum by ammonium sulphate precipitation followed by antigen affinity chromatography using the immunizing peptide.

Supplied at 0.5 mg/ml in Tris saline, 0.02% sodium azide, pH7.3 with 0.5% bovine serum albumin.

Aliquot and store at -20°C. Minimize freezing and thawing.

Applications Tested

Peptide ELISA: antibody detection limit dilution 1:64000.

Western blot: Approx. 38kDa band observed in lysates of cell lines THP-1, U937 and A431, and in Human Spleen lysates and approx. 37kDa in Human Tonsil lysates (calculated MW of 38.5kDa according to NP_001738.2 and 36.9kDa according to NP_001243069.1). Recommended concentration: 0.1-0.3µg/ml. Primary incubation 1 hour at room temperature.

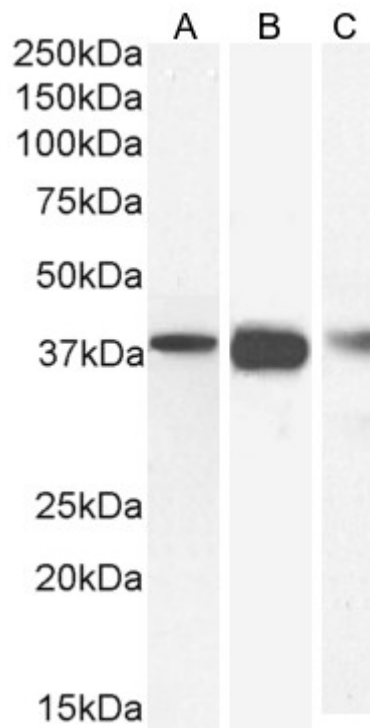
Positive Control: A batch specific positive control lysate is available for this product. Please contact Sales@everestbiotech.com for availability.

Flow Cytometry: Flow cytometric analysis of THP-1 cells. Recommended concentration: 10ug/ml.

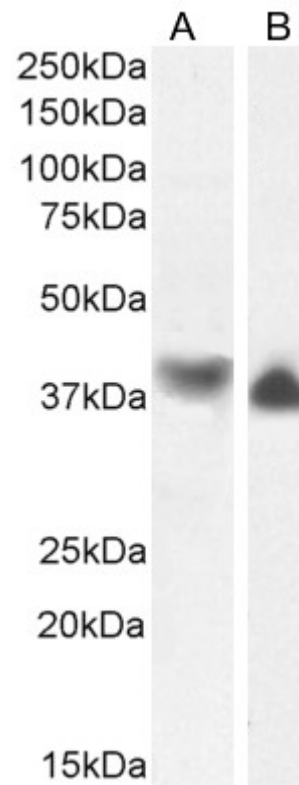
Species Reactivity

Tested: Human

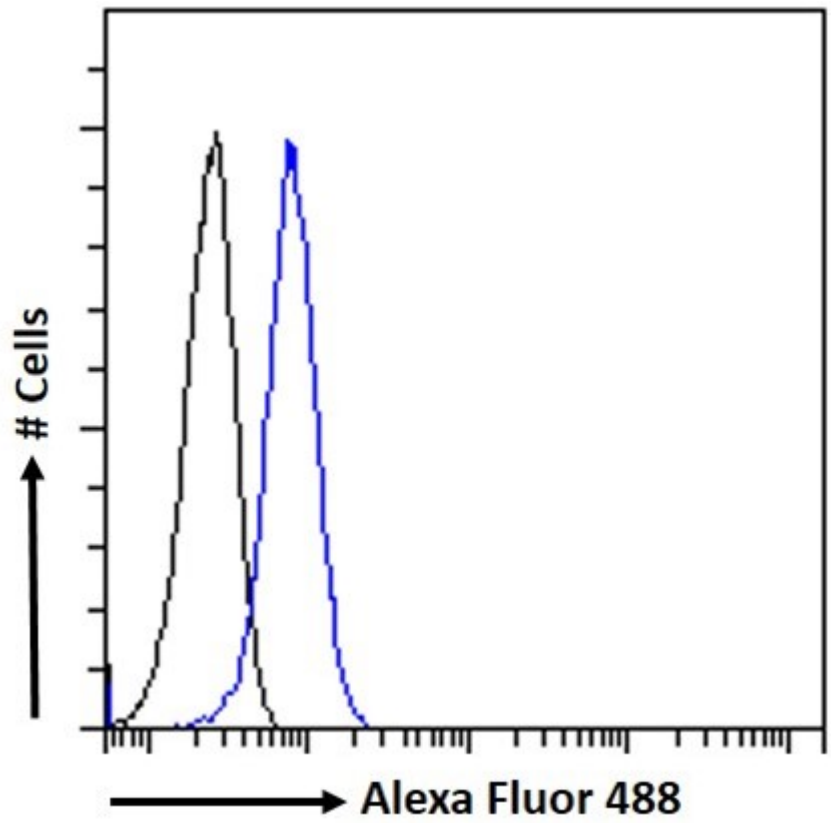
Expected from sequence similarity: Human, Dog



EB12421 (0.03 μ g/ml) staining of THP-1 (A) and (0.3 μ g/ml) U937 (B) and A431 (C) cell lysate (35 μ g protein in RIPA buffer). Detected by chemiluminescence.



EB12421 (0.1 μ g/ml) staining of Human Spleen (A) and Tonsil (B) lysate (35 μ g protein in RIPA buffer). Detected by chemiluminescence.



EB12421 Flow cytometric analysis of paraformaldehyde fixed THP-1 cells (blue line), permeabilized with 0.5% Triton. Primary incubation 1hr (10ug/ml) followed by Alexa Fluor 488 secondary antibody (1ug/ml). IgG control: Unimmunized goat IgG (black line) followed by Alexa Fluor 488 secondary antibody.