

## UK Office

### Everest Biotech Ltd

Cherwell Innovation Centre  
77 Heyford Park  
Upper Heyford  
Oxfordshire  
OX25 5HD  
UK

Enquiries:

[info@everestbiotech.com](mailto:info@everestbiotech.com)

Sales:

[sales@everestbiotech.com](mailto:sales@everestbiotech.com)

Tech support:

[support@everestbiotech.com](mailto:support@everestbiotech.com)

Tel: +44 (0)1869 238326

[www.everestbiotech.com](http://www.everestbiotech.com)

**Research Use Only. Not for  
diagnostic or therapeutic use.**

## EB11989 - Goat Anti-CAPN1 (aa468-481) Antibody

Size: 100µg specific antibody in 200µl



### Target Protein

**Principal Names:** CAPN1, calpain 1, (mu/I) large subunit, CANP, CANP1, CANPL1, muCANP, muCL, CANP 1, calcium-activated neutral proteinase 1, calpain mu-type, calpain, large polypeptide L1, calpain-1 catalytic subunit, calpain-1 large subunit, cell proliferation-inducing gene 30 protein, cell proliferation-inducing protein 30, micromolar-calpain

**Official Symbol:** CAPN1

**Accession Number(s):** NP\_005177.2

**Human GeneID(s):** [823](#)

**Important Comments:** Reported variants represent identical protein: NP\_001185797.1, NP\_005177.2, NP\_001185798.1.

### Immunogen

Peptide with sequence C-NASRARSEQFINLR, from the internal region of the protein sequence according to NP\_005177.2.

Please note the [peptide](#) is available for sale.

### Purification and Storage

Purified from goat serum by ammonium sulphate precipitation followed by antigen affinity chromatography using the immunizing peptide.

Supplied at 0.5 mg/ml in Tris saline, 0.02% sodium azide, pH7.3 with 0.5% bovine serum albumin.

Aliquot and store at -20°C. Minimize freezing and thawing.

### Applications Tested

**Peptide ELISA:** antibody detection limit dilution 1:128000.

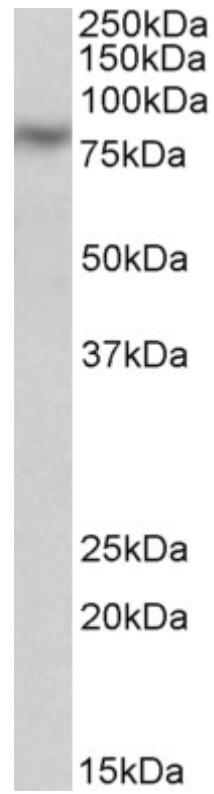
**Western blot:** Approx 80kDa band observed in Human Kidney lysates (calculated MW of 81.9kDa according to NP\_005177.2). Recommended concentration: 0.3-1µg/ml. Primary incubation was 1 hour.

**IHC:** Paraffin embedded Human Kidney. Recommended concentration: 5µg/ml.

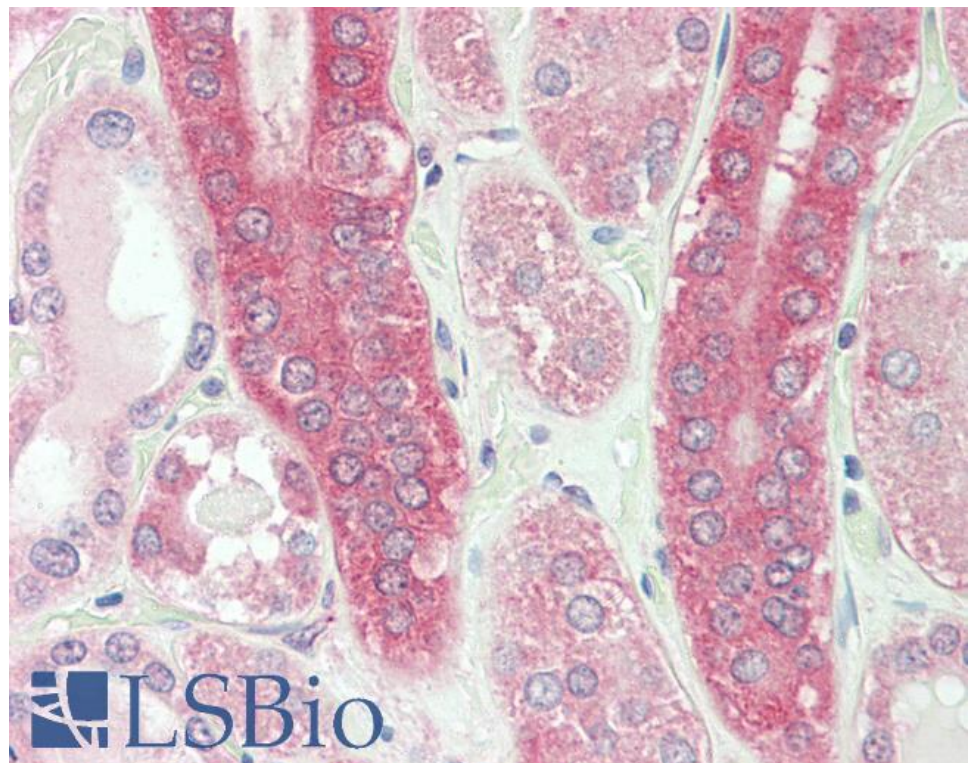
### Species Reactivity

**Tested:** Human

**Expected from sequence similarity:** Human, Pig, Cow



EB11989 (0.3 $\mu$ g/ml) staining of Human Kidney lysate (35 $\mu$ g protein in RIPA buffer). Detected by chemiluminescence.



EB11989 (5 $\mu$ g/ml) staining of paraffin embedded Human Kidney. Steamed antigen retrieval with citrate buffer Ph 6, AP-staining.