

UK Office

Everest Biotech Ltd

Cherwell Innovation Centre
77 Heyford Park
Upper Heyford
Oxfordshire
OX25 5HD
UK

Enquiries:

info@everestbiotech.com

Sales:

sales@everestbiotech.com

Tech support:

support@everestbiotech.com

Tel: +44 (0)1869 238326

www.everestbiotech.com

**Research Use Only. Not for
diagnostic or therapeutic use.**

EB12638 - Goat Anti-CAPRIN1 Antibody

Size: 100µg specific antibody in 200µl



Target Protein

Principal Names: CAPRIN1, cell cycle associated protein 1, GPIAP1, GPIP137, M11S1, RNG105, p137GPI, GPI-anchored membrane protein 1, GPI-anchored protein p137, GPI-p137, RNA granule protein 105, activation/proliferation-associated protein 1, caprin 1, caprin-1, cell cycle

Official Symbol: CAPRIN1

Accession Number(s): NP_005889.3; NP_976240.1

Human GeneID(s): [4076](#)

Non-Human GeneID(s): 362173 (rat)

Important Comments: This antibody is expected to recognize both reported isoforms (NP_005889.3; NP_976240.1).

Immunogen

Peptide with sequence C-EQRPQKEPIDQ, from the internal region of the protein sequence according to NP_005889.3; NP_976240.1.

Please note the [peptide](#) is available for sale.

Purification and Storage

Purified from goat serum by ammonium sulphate precipitation followed by antigen affinity chromatography using the immunizing peptide.

Supplied at 0.5 mg/ml in Tris saline, 0.02% sodium azide, pH7.3 with 0.5% bovine serum albumin.

Aliquot and store at -20°C. Minimize freezing and thawing.

Applications Tested

Peptide ELISA: antibody detection limit dilution 1:16000.

Western blot: Approx 80+140kDa bands observed in lysates of cell line Caco-2, HeLa, Jurkat and K562 (calculated MW of 78.4kDa according to NP_005889.3). The 140kDa band corresponds to the reported p137 (Ellis and Luzio, PMID: 7657653). Recommended concentration: 0.3-1µg/ml. Primary incubation 1 hoiur at room temperature.

IHC: Paraffin embedded Human Brain (Cortex). Recommended concentration: 5µg/ml.

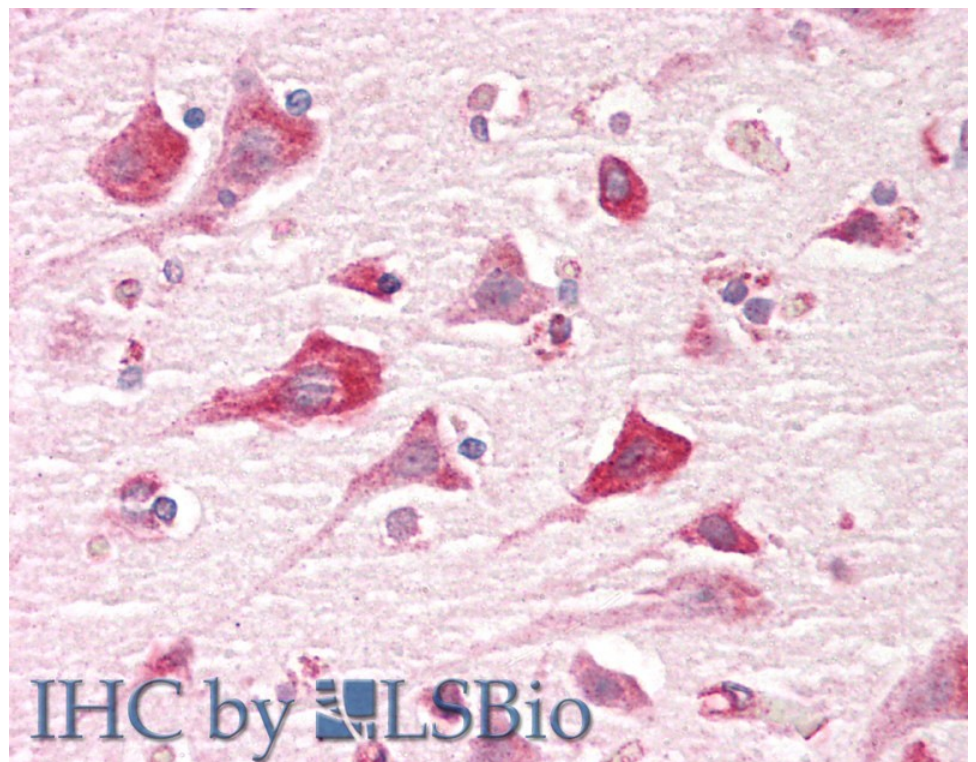
Species Reactivity

Tested: Human

Expected from sequence similarity: Human, Rat, Dog, Pig



EB12638 (0.3µg/ml) staining of Jurkat (A) and HeLa (B) lysates (35µg protein in RIPA buffer). Detected by chemiluminescence.



EB12638 (5µg/ml) staining of paraffin embedded Human Cortex. Steamed antigen retrieval with citrate buffer pH 6, AP-staining.