



UK Office

Everest Biotech Ltd

Cherwell Innovation Centre
77 Heyford Park
Upper Heyford
Oxfordshire
OX25 5HD
UK

Enquiries:

info@everestbiotech.com

Sales:

sales@everestbiotech.com

Tech support:

support@everestbiotech.com

Tel: +44 (0)1869 238326

Fax: +44 (0)1869 238327

US Office

Everest Biotech c/o Abcore

405 Maple Street, Suite A106
Ramona,
CA 92065
USA

Inquiries:

info@everestbiotech.com

Sales:

usasales@everestbiotech.com

Tech support:

support@everestbiotech.com

Tel: 888-320-4628 (toll-free)

Fax: 888-841-9041

www.everestbiotech.com

**Research Use Only. Not for
diagnostic or therapeutic use.**

EB12320 - Goat Anti-carbonic anhydrase XII (aa188-199) Antibody

Size: 100µg specific antibody in 200µl



Target Protein

Principal Names: CA12, carbonic anhydrase XII, CAXII, HsT18816, CA-XII, carbonate dehydratase XII, carbonic anhydrase 12, carbonic dehydratase, tumor antigen HOM-RCC-3.1.3

Official Symbol: CA12

Accession Number(s): NP_001209.1; NP_996808.1; NP_001280571.1

Human GeneID(s): [771](#)

Important Comments: This antibody is expected to recognize all reported isoforms (NP_001209.1; NP_996808.1; NP_001280571.1).

Immunogen

Peptide with sequence C-SHLQHVKYKGQE, from the internal region of the protein sequence according to NP_001209.1; NP_996808.1; NP_001280571.1.

Please note the [peptide](#) is available for sale.

Purification and Storage

Purified from goat serum by ammonium sulphate precipitation followed by antigen affinity chromatography using the immunizing peptide.

Supplied at 0.5 mg/ml in Tris saline, 0.02% sodium azide, pH7.3 with 0.5% bovine serum albumin.

Aliquot and store at -20°C. Minimize freezing and thawing.

Applications Tested

Peptide ELISA: antibody detection limit dilution 1:128000.

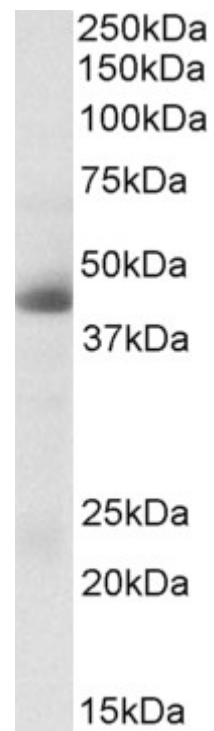
Western blot: Approx 45kDa band observed in Human Kidney lysates (calculated MW of 39.5kDa according to NP_001209.1). Recommended concentration: 0.3-1µg/ml.

IHC: In paraffin embedded Human Kidney shows membranous staining in some epithelial cells of convoluted tubules. Recommended concentration, 5-10µg/ml.

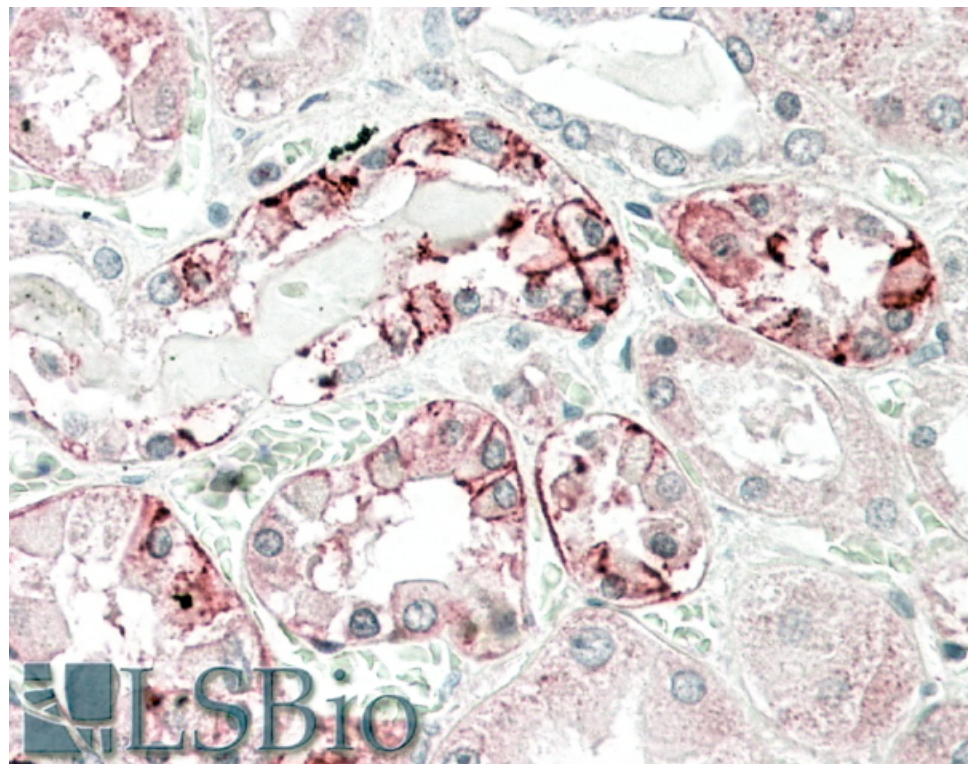
Species Reactivity

Tested: Human

Expected from sequence similarity: Human



EB12320 (0.3 μ g/ml) staining of Human Kidney lysate (35 μ g protein in RIPA buffer). Primary incubation was 1 hour. Detected by chemiluminescence.



EB12320 (5 μ g/ml) staining of paraffin embedded Human Kidney. Steamed antigen retrieval with citrate buffer pH 6, AP-staining.