



Everest Biotech Ltd
Cherwell Innovation Centre
77 Heyford Park
Upper Heyford
Oxfordshire
OX25 5HD, United Kingdom

everestbiotech.com

sales@everestbiotech.com

support@everestbiotech.com

Tel +44 1869 238326

Fax +44 1869 238327

Research Use Only. Not for diagnostic or therapeutic use.

Storage: For long-term storage keep aliquots at -20°C. (Store no longer than 12 months at 4°C). Minimize freezing and thawing.

EB05886 - Goat Anti-CARD11 Antibody

Size: 100µg specific antibody in 200µl



Target Protein

Principal Names: bcl10-interacting maguk protein 3, card-maguk protein 1, MGC133069, CARMA1, BIMP3, caspase recruitment domain family, member 11, CARD11

Official Symbol: CARD11

Accession Number(s): NP_115791.3

Human GeneID(s): [84433](#)

Non-Human GeneID(s): 108723 (mouse)

Immunogen

Peptide with sequence C-QRKTIVVDEDQL, from the C Terminus of the protein sequence according to NP_115791.3.

Please note the [peptide](#) is available for sale.

Purification and Storage

Purified from goat serum by ammonium sulphate precipitation followed by antigen affinity chromatography using the immunizing peptide.

Supplied at 0.5 mg/ml in Tris saline, 0.02% sodium azide, pH7.3 with 0.5% bovine serum albumin.

Aliquot and store at -20°C. Minimize freezing and thawing.

Applications Tested

Peptide ELISA: antibody detection limit dilution 1:32000.

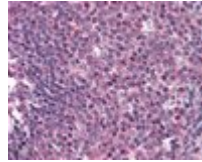
Western blot: Approx 150+65kDa bands observed in lysates of cell line Jurkat (calculated MW of 133kDa according to NP_115791.2). A similar pattern was observed in HEK293 transiently expressing CARD11 (picture not shown). These bands are not observed in the non-transfected HEK293. Recommended concentration: 1-3µg/ml. An additional band of unknown identity was also consistently observed at 60kDa. This band was successfully blocked by incubation with the immunising peptide. We would appreciate any feedback from people in the field - have any such results been reported with other antibodies/lysates? Have any further splice variants/modified forms been reported?

IHC: Immunohistochemistry: In paraffin embedded Human Spleen shows nuclear staining. Recommended concentration, 2-5µg/ml.

Species Reactivity

Tested: Human

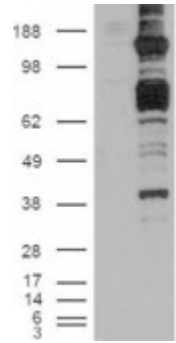
Expected from sequence similarity: Human, Mouse, Dog, Cow



EB05886 (2 μ g/ml) staining of paraffin embedded Human Spleen. Steamed antigen retrieval with citrate buffer pH 6, AP-staining.



EB05886 staining (1 μ g/ml) of human Jurkat cells (RIPA buffer, 35 μ g total protein per lane). Primary incubated for 1 hour. Detected by western blot using chemiluminescence.



HEK293 overexpressing CARD11 (RC222740) and probed with EB05886 (mock transfection in first lane), tested by Origene.