



Everest Biotech Ltd
Cherwell Innovation Centre
77 Heyford Park
Upper Heyford
Oxfordshire
OX25 5HD, United Kingdom

everestbiotech.com

sales@everestbiotech.com

support@everestbiotech.com

Tel +44 1869 238326

Fax +44 1869 238327

Research Use Only. Not for diagnostic or therapeutic use.

Storage: For long-term storage keep aliquots at -20°C. (Store no longer than 12 months at 4°C). Minimize freezing and thawing.

EB05922 - Goat Anti-CARD6 Antibody

Size: 100µg specific antibody in 200µl



Target Protein

Principal Names: CARD-containing inhibitor of Nod1 and Cardiac-induced NF-κB activation, CINCIN1, caspase recruitment domain protein 6, caspase recruitment domain family, member 6, CARD6

Official Symbol: CARD6

Accession Number(s): NP_115976.2

Human GeneID(s): [84674](#)

Immunogen

Peptide with sequence ATESTPSEIIRER-C, from the N Terminus of the protein sequence according to NP_115976.2.

Please note the [peptide](#) is available for sale.

Purification and Storage

Purified from goat serum by ammonium sulphate precipitation followed by antigen affinity chromatography using the immunizing peptide.

Supplied at 0.5 mg/ml in Tris saline, 0.02% sodium azide, pH7.3 with 0.5% bovine serum albumin.

Aliquot and store at -20°C. Minimize freezing and thawing.

Applications Tested

Peptide ELISA: antibody detection limit dilution 1:32000.

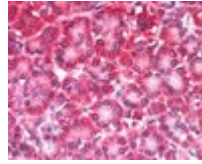
Western blot: Approx. 45-50kDa and 25-30kDa bands observed in A549, Human Heart and Human Skeletal Muscle lysates at 1 µg of primary. Please note that the bands we observe are different from the predicted size of approx. 119kDa according to NP_115976. Currently we cannot find an explanation for this in the literature. We would appreciate any feedback from people in the field - have any results been reported with other antibodies/lysates? Have any splice variants/modified forms been reported?

IHC: In paraffin embedded Human Pancreas shows variable staining of cytoplasm in acinar cells. Recommended concentration, 5-10µg/ml.

Species Reactivity

Tested: Human

Expected from sequence similarity: Human



EB05922 (5µg/ml) staining of paraffin embedded Human Pancreas. Steamed antigen retrieval with citrate buffer pH 6, AP-staining.