



UK Office

Everest Biotech Ltd

Cherwell Innovation Centre
77 Heyford Park
Upper Heyford
Oxfordshire
OX25 5HD
UK

Enquiries:

info@everestbiotech.com

Sales:

sales@everestbiotech.com

Tech support:

support@everestbiotech.com

Tel: +44 (0)1869 238326

www.everestbiotech.com

**Research Use Only. Not for
diagnostic or therapeutic use.**

EB11672 - Goat Anti-Caspase 12 (aa232-244) Antibody

Size: 100µg specific antibody in 200µl



Target Protein

Principal Names: CASP12, CASP-12, CASP12P1, caspase 12 (gene/pseudogene), caspase 12 pseudogene 1, inactive caspase-12, OTTHUMP00000207026, OTTHUMP00000207028, OTTHUMP00000207029, OTTHUMP00000207031, OTTHUMP00000207032, OTTHUMP00000219058

Official Symbol: CASP12

Accession Number(s): NP_001177945.1

Human GeneID(s): [100506742](#)

Immunogen

Peptide with sequence C-TDSGKAGADTHGR, from the internal region of the protein sequence according to NP_001177945.1.

Please note the [peptide](#) is available for sale.

Purification and Storage

Purified from goat serum by ammonium sulphate precipitation followed by antigen affinity chromatography using the immunizing peptide.

Supplied at 0.5 mg/ml in Tris saline, 0.02% sodium azide, pH7.3 with 0.5% bovine serum albumin.

Aliquot and store at -20°C. Minimize freezing and thawing.

Applications Tested

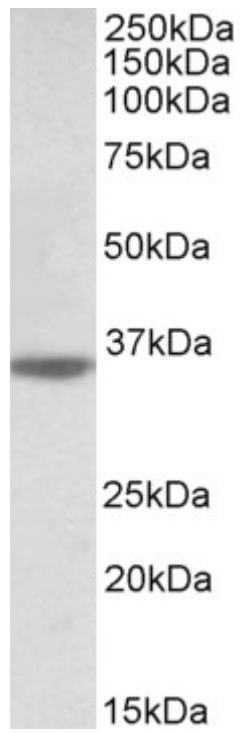
Peptide ELISA: antibody detection limit dilution 1:128000.

Western blot: Approx 35kDa band observed in Human Heart lysates (calculated MW of 38.9kDa according to NP_001177945.1). Recommended concentration: 0.3-1µg/ml.

Species Reactivity

Tested: Human

Expected from sequence similarity: Human



EB11672 (0.5 μ g/ml) staining of Human Heart lysate (35 μ g protein in RIPA buffer). Primary incubation was 1 hour. Detected by chemiluminescence.