



UK Office

Everest Biotech Ltd

Cherwell Innovation Centre
77 Heyford Park
Upper Heyford
Oxfordshire
OX25 5HD
UK

Enquiries:

info@everestbiotech.com

Sales:

sales@everestbiotech.com

Tech support:

support@everestbiotech.com

Tel: +44 (0)1869 238326

Fax: +44 (0)1869 238327

US Office

Everest Biotech c/o Abcore

405 Maple Street, Suite A106
Ramona,
CA 92065
USA

Inquiries:

info@everestbiotech.com

Sales:

usasales@everestbiotech.com

Tech support:

support@everestbiotech.com

Tel: 888-320-4628 (toll-free)

Fax: 888-841-9041

www.everestbiotech.com

**Research Use Only. Not for
diagnostic or therapeutic use.**

EB12165 - Goat Anti-Caspase 6 (alpha) Antibody

Size: 100µg specific antibody in 200µl



Target Protein

Principal Names: CASP6, caspase 6, apoptosis-related cysteine peptidase, MCH2, apoptotic protease MCH-2, caspase 6, apoptosis-related cysteine protease, caspase-6

Official Symbol: CASP6

Accession Number(s): NP_001217.2; NP_116787.1

Human GeneID(s): [839](#)

Non-Human GeneID(s): 12368 (mouse), 83584 (rat)

Important Comments: This antibody is expected to recognize reproted isoform alpha (NP_001217.2) only. The immunizing peptide overlaps phosphorylated serine 257 and therefore this antibody is not expected to recognize the phosphorylated protein.

Immunogen

Peptide with sequence NRKVSQRRVDFCKDP, from the internal region of the protein sequence according to NP_001217.2; NP_116787.1.

Please note the [peptide](#) is available for sale.

Purification and Storage

Purified from goat serum by ammonium sulphate precipitation followed by antigen affinity chromatography using the immunizing peptide.

Supplied at 0.5 mg/ml in Tris saline, 0.02% sodium azide, pH7.3 with 0.5% bovine serum albumin.

Aliquot and store at -20°C. Minimize freezing and thawing.

Applications Tested

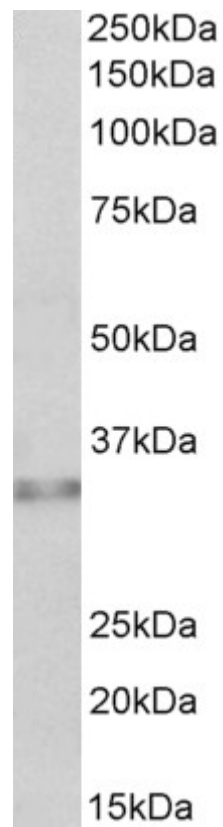
Peptide ELISA: antibody detection limit dilution 1:128000.

Western blot: Approx 33kDa band observed in Human Colon lysates (calculated MW of 33.3kDa according to NP_001217.2). Recommended concentration: 0.5-1.5µg/ml.

Species Reactivity

Tested: Human

Expected from sequence similarity: Human, Mouse, Rat, Dog, Pig, Cow



EB12165 (0.5 μ g/ml) staining of Human Colon lysate (35 μ g protein in RIPA buffer). Primary incubation was 1 hour. Detected by chemiluminescence.