



## UK Office

### Everest Biotech Ltd

Cherwell Innovation Centre  
77 Heyford Park  
Upper Heyford  
Oxfordshire  
OX25 5HD  
UK

Enquiries:

[info@everestbiotech.com](mailto:info@everestbiotech.com)

Sales:

[sales@everestbiotech.com](mailto:sales@everestbiotech.com)

Tech support:

[support@everestbiotech.com](mailto:support@everestbiotech.com)

Tel: +44 (0)1869 238326

Fax: +44 (0)1869 238327

## US Office

### Everest Biotech c/o Abcore

405 Maple Street, Suite A106  
Ramona,  
CA 92065  
USA

Inquiries:

[info@everestbiotech.com](mailto:info@everestbiotech.com)

Sales:

[usasales@everestbiotech.com](mailto:usasales@everestbiotech.com)

Tech support:

[support@everestbiotech.com](mailto:support@everestbiotech.com)

Tel: 888-320-4628 (toll-free)

Fax: 888-841-9041

[www.everestbiotech.com](http://www.everestbiotech.com)

**Research Use Only. Not for  
diagnostic or therapeutic use.**

## EB07282-T - Goat Anti-Catalase / CAT Antibody - Trial

Size: 20µg specific antibody in 40µl



### Target Protein

**Principal Names:** CAT, catalase, HGNC:1516, MGC138422, MGC138424

**Official Symbol:** CAT

**Accession Number(s):** NP\_001743.1

**Human GeneID(s):** [847](#)

**Non-Human GeneID(s):** 12359 (mouse)

### Immunogen

Peptide with sequence C-DKYNAEKPKNAIHT, from the internal region of the protein sequence according to NP\_001743.1.

Please note the [peptide](#) is available for sale.

### Purification and Storage

Purified from goat serum by ammonium sulphate precipitation followed by antigen affinity chromatography using the immunizing peptide.

Supplied at 0.5 mg/ml in Tris saline, 0.02% sodium azide, pH7.3 with 0.5% bovine serum albumin.

Aliquot and store at -20°C. Minimize freezing and thawing.

### Applications Tested

**Peptide ELISA:** antibody detection limit dilution 1:128000.

**Western blot:** Approx 60kDa band observed in Human and Mouse Kidney and Liver lysates (calculated MW of 59.8kDa according to Human NP\_001743.1 and Mouse NP\_033934.2). Recommended concentration: 0.003-0.01µg/ml. Primary incubation 1 hour at room temperature.

**IHC:** Paraffin embedded Human Kidney. Recommended concentration: 4-6µg/ml.

### Species Reactivity

**Tested:** Human, Mouse

**Expected from sequence similarity:** Human, Mouse, Dog

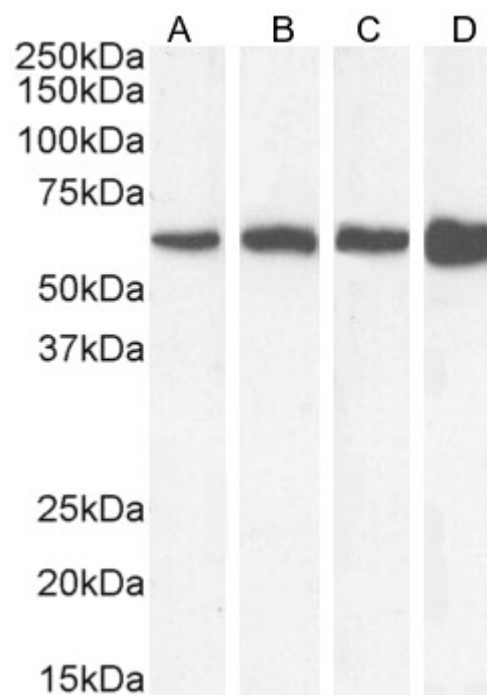
### Specific References

**This antibody (previous batch) has been successfully used in Western blot on Mouse:**

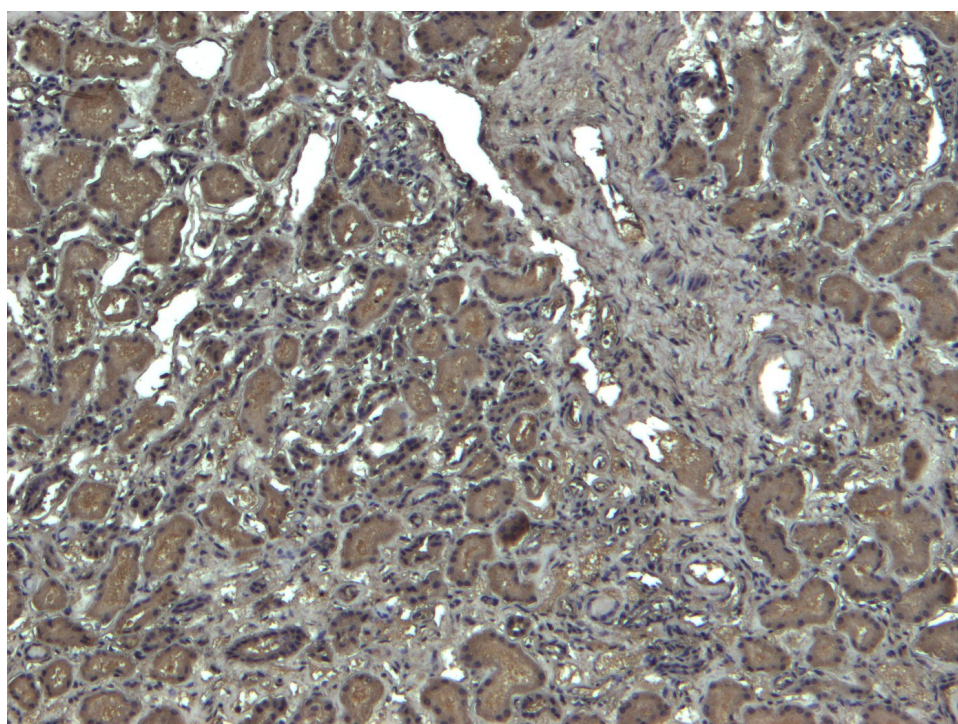
Baret P, Le Sage F, Planesse C, Meilhac O, Devin A, Bourdon E, Rondeau P  
Glycated human albumin alters mitochondrial respiration in preadipocyte 3T3-L1 cells. Biofactors. 2017 Jul 8;43(4):577-592.  
PMID: 28543688

**This antibody (previous batch) has been successfully used in Western blot on Mouse:**

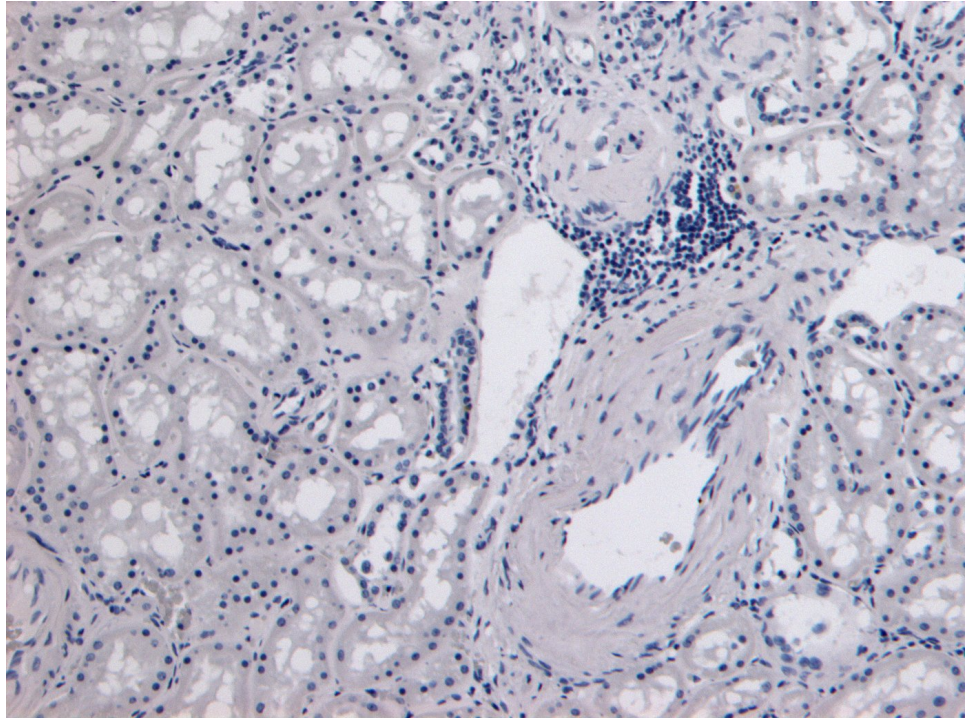
Patche J, Girard D, Catan A, Boyer F, Dobi A, Planesse C, Diotel N, Guerin-Dubourg A, Baret P, Bravo SB, Paradela-Dobarro B, Álvarez E, Essop MF, Meilhac O, Bourdon E, Rondeau P.  
Diabetes-induced hepatic oxidative stress: a new pathogenic role for glycated albumin. Free Radic Biol Med. 2017 Jan;102:133-148.  
PMID: 27890722



EB07282 (0.01 $\mu$ g/ml) staining of Human Kidney (A) and Liver (B) and Mouse Kidney (C) and Liver (D) lysates (35 $\mu$ g protein in RIPA buffer). Detected by chemiluminescence.



EB07282 (4 $\mu$ g/ml) staining of paraffin embedded Human Kidney. Heat induced antigen retrieval with citrate buffer pH 6, HRP-staining.



EB07282 Negative Control showing staining of paraffin embedded Human Kidney, with no primary antibody.