



Everest Biotech Ltd
Cherwell Innovation Centre
77 Heyford Park
Upper Heyford
Oxfordshire
OX25 5HD, United Kingdom

everestbiotech.com

sales@everestbiotech.com

support@everestbiotech.com

Tel +44 1869 238326

Fax +44 1869 238327

**Research Use Only. Not for
diagnostic or therapeutic use.**

Storage: For long-term storage
keep aliquots at -20°C. (Store no
longer than 12 months at 4°C).
Minimize freezing and thawing.

EB07282 - Goat Anti-Catalase / CAT Antibody

Size: 100µg specific antibody in 200µl



Target Protein

Principal Names: MGC138424, MGC138422, HGNC:1516, catalase, CAT

Official Symbol: CAT

Accession Number(s): NP_001743.1

Human GeneID(s): [847](#)

Non-Human GeneID(s): 12359 (mouse)

Immunogen

Peptide with sequence C-DKYNAEKPKNAIHT, from the internal region of the protein sequence according to NP_001743.1.

Please note the [peptide](#) is available for sale.

Purification and Storage

Purified from goat serum by ammonium sulphate precipitation followed by antigen affinity chromatography using the immunizing peptide.

Supplied at 0.5 mg/ml in Tris saline, 0.02% sodium azide, pH7.3 with 0.5% bovine serum albumin.

Aliquot and store at -20°C. Minimize freezing and thawing.

Applications Tested

Peptide ELISA: antibody detection limit dilution 1:32000.

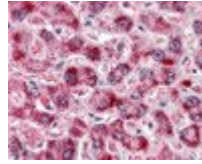
Western blot: Approx 60kDa band observed in Human, Mouse and Rat Kidney and Liver lysates (calculated MW of 59.8kDa according to NP_001743.1). Recommended concentration: 0.3-1µg/ml.

IHC: Immunohistochemistry: In paraffin embedded Human Liver shows vesicular staining in the cytoplasm of hepatocytes. Recommended concentration, 2-4µg/ml.

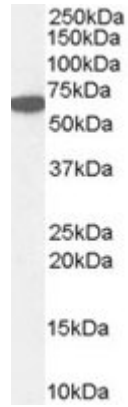
Species Reactivity

Tested: Human, Mouse, Rat

Expected from sequence similarity: Human, Mouse, Dog



EB07282 (2µg/ml) staining of paraffin embedded Human Liver. Steamed antigen retrieval with citrate buffer pH 6, AP-staining.



EB07282 (1µg/ml) staining of Human Kidney lysate (35µg protein in RIPA buffer). Primary incubation was 1 hour. Detected by chemiluminescence.