



UK Office

Everest Biotech Ltd

Cherwell Innovation Centre
77 Heyford Park
Upper Heyford
Oxfordshire
OX25 5HD
UK

Enquiries:

info@everestbiotech.com

Sales:

sales@everestbiotech.com

Tech support:

support@everestbiotech.com

Tel: +44 (0)1869 238326

Fax: +44 (0)1869 238327

US Office

Everest Biotech c/o Abcore

405 Maple Street, Suite A106
Ramona,
CA 92065
USA

Inquiries:

info@everestbiotech.com

Sales:

usasales@everestbiotech.com

Tech support:

support@everestbiotech.com

Tel: 888-320-4628 (toll-free)

Fax: 888-841-9041

www.everestbiotech.com

**Research Use Only. Not for
diagnostic or therapeutic use.**

EB07242 - Goat Anti-Catenin alpha1 Antibody

Size: 100µg specific antibody in 200µl



Target Protein

Principal Names: catenin (cadherin-associated protein), alpha 1, 102kDa, HGNC:2509, CTNNA1, CAP102, FLJ36832, alpha 1 (102kD), alpha-E-catenin, alpha-catenin, alphaE-catenin, cadherin-associated protein, 102kDa, catenin (cadherin-associated protein), alpha 1 (102kD), catenin, alpha 1

Official Symbol: CTNNA1

Accession Number(s): NP_001894.2

Human GeneID(s): [1495](#)

Non-Human GeneID(s): 12385 (mouse), 307505 (rat)

Immunogen

Peptide with sequence C-KREKQDETQTKIK, from the internal region of the protein sequence according to NP_001894.2.

Please note the [peptide](#) is available for sale.

Purification and Storage

Purified from goat serum by ammonium sulphate precipitation followed by antigen affinity chromatography using the immunizing peptide.

Supplied at 0.5 mg/ml in Tris saline, 0.02% sodium azide, pH7.3 with 0.5% bovine serum albumin.

Aliquot and store at -20°C. Minimize freezing and thawing.

Applications Tested

Peptide ELISA: antibody detection limit dilution 1:32000.

Western blot: Approx 100kDa band observed in human colon and human skin lysates (calculated MW of 100kDa according to NP_001894.2). Recommended concentration: 1-3µg/ml.

IHC: Paraffin embedded Human Prostate and Uterus. Recommended concentration: 3.75µg/ml.

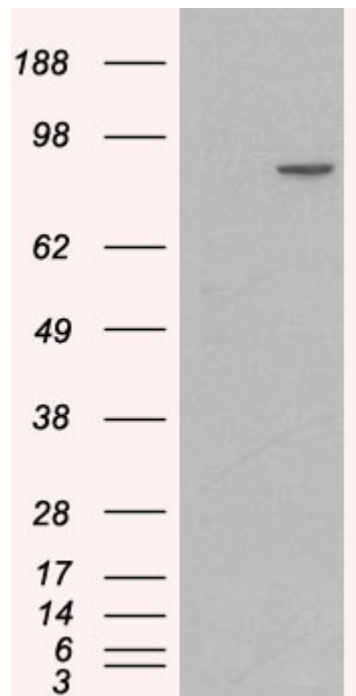
Species Reactivity

Tested: Human

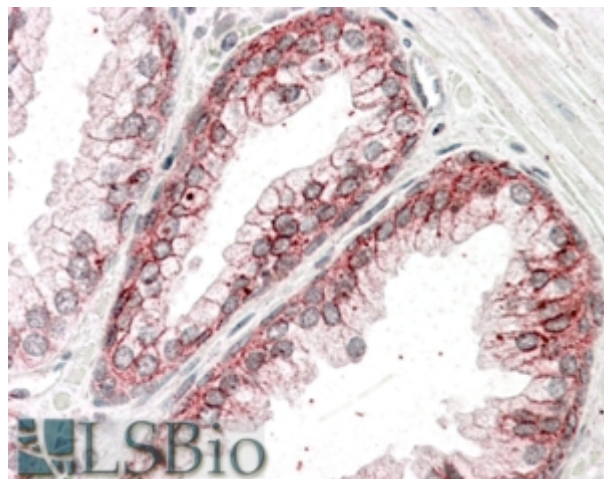
Expected from sequence similarity: Human, Mouse, Rat, Dog

250kDa
150kDa
100kDa
75kDa
50kDa
37kDa
25kDa
20kDa
15kDa
10kDa

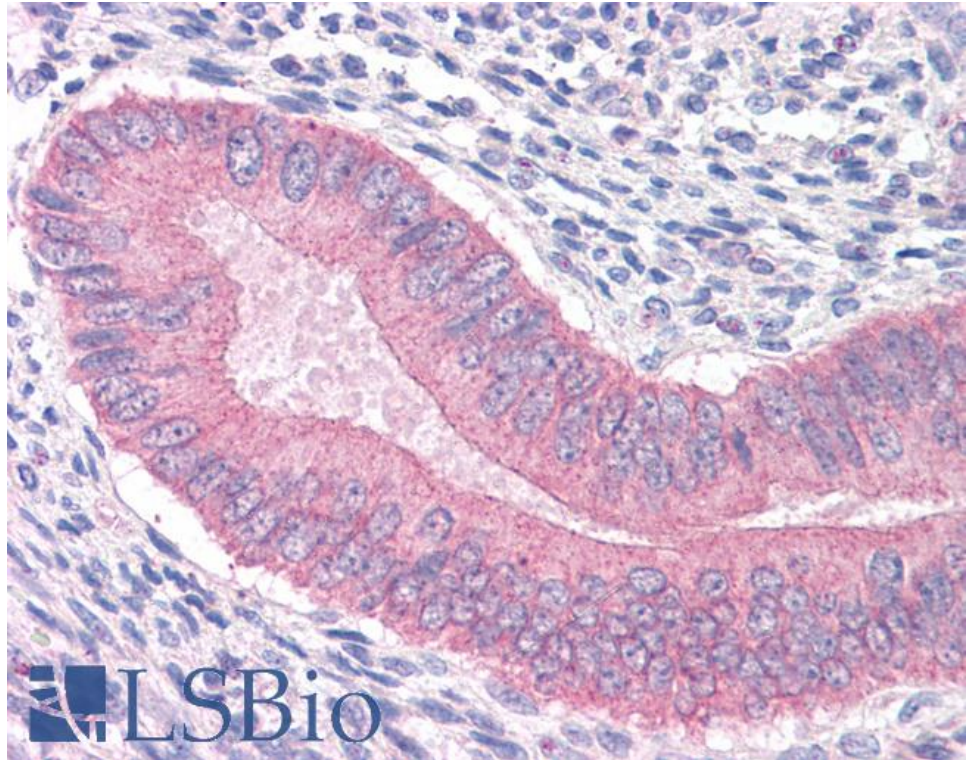
EB07242 (1µg/ml) staining of human colon lysate (35µg protein in RIPA buffer). Primary incubation was 1 hour.
Detected by chemiluminescence.



HEK293 overexpressing Human CTNNA1 (RC201766) and probed with EB07242 (mock transfection in first lane), tested by Origene.



EB07242 (3.75µg/ml) staining of paraffin embedded Human Prostate. Steamed antigen retrieval with citrate buffer pH 6, AP-staining.



EB07242 (3.75µg/ml) staining of paraffin embedded Human Uterus. Steamed antigen retrieval with citrate buffer pH 6, AP-staining.