



UK Office

Everest Biotech Ltd

Cherwell Innovation Centre
77 Heyford Park
Upper Heyford
Oxfordshire
OX25 5HD
UK

Enquiries:

info@everestbiotech.com

Sales:

sales@everestbiotech.com

Tech support:

support@everestbiotech.com

Tel: +44 (0)1869 238326

www.everestbiotech.com

**Research Use Only. Not for
diagnostic or therapeutic use.**

EB08596 - Goat Anti-Cathepsin K Antibody

Size: 100µg specific antibody in 200µl



Target Protein

Principal Names: CTSK, cathepsin K, CTS02, CTSO, CTSO1, CTSO2, MGC23107, PKND, PYCD, cathepsin K (pyncnodysostosis), cathepsin O1, cathepsin O2, cathepsin X

Official Symbol: CTSK

Accession Number(s): NP_000387.1

Human GeneID(s): [1513](#)

Immunogen

Peptide with sequence C-KTHRKQYNNKVDE, from the internal region (near N Terminus) of the protein sequence according to NP_000387.1.

Please note the [peptide](#) is available for sale.

Purification and Storage

Purified from goat serum by ammonium sulphate precipitation followed by antigen affinity chromatography using the immunizing peptide.

Supplied at 0.5 mg/ml in Tris saline, 0.02% sodium azide, pH7.3 with 0.5% bovine serum albumin.

Aliquot and store at -20°C. Minimize freezing and thawing.

Applications Tested

Peptide ELISA: antibody detection limit dilution 1:32000.

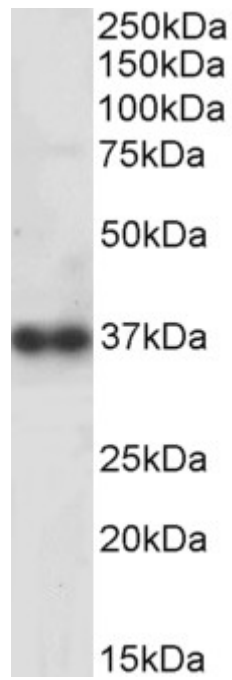
Western blot: Approx 37kDa band observed in Rat Skeletal Muscle lysates and in preliminary testing of Human Skeletal Muscle lysate (calculated MW of 36.8kDa according to Rat NP_113748.1). Recommended concentration: 0.1-1µg/ml. Primary incubation 1 hour at room temperature.

Immunofluorescence: Strong expression of the protein seen in the vesicles of U2OS and MCF7 cells. Recommended concentration: 10µg/ml.

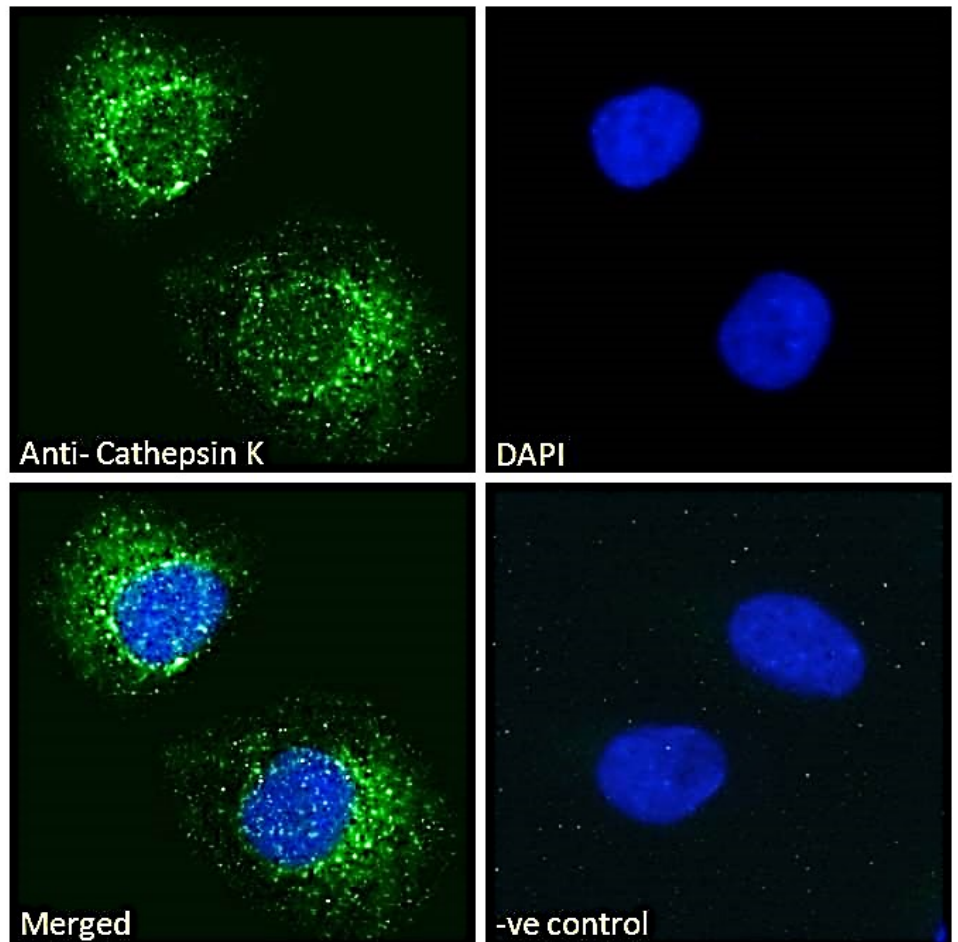
Species Reactivity

Tested: Human, Rat

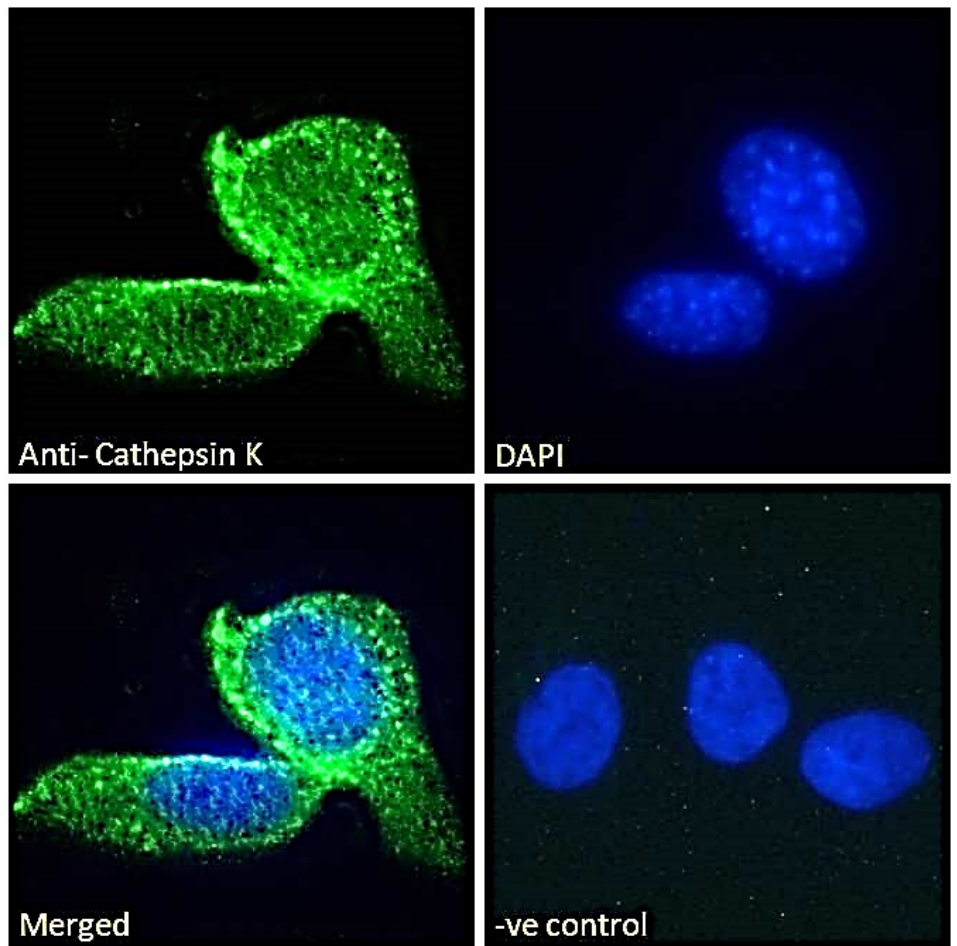
Expected from sequence similarity: Human, Mouse, Rat, Dog, Pig, Cow



EB08596 (1 μ g/ml) staining of Rat Skeletal Muscle lysate (35 μ g protein in RIPA buffer). Detected by chemiluminescence.



EB08596 Immunofluorescence analysis of paraformaldehyde fixed U2OS cells, permeabilized with 0.15% Triton. Primary incubation 1hr (10 μ g/ml) followed by Alexa Fluor 488 secondary antibody (2 μ g/ml), showing vesicle staining. The nuclear stain is DAPI (blue). Negative control: Unimmunized goat IgG (10 μ g/ml) followed by Alexa Fluor 488 secondary antibody (2 μ g/ml).



EB08596 Immunofluorescence analysis of paraformaldehyde fixed MCF7 cells, permeabilized with 0.15% Triton. Primary incubation 1hr (10ug/ml) followed by Alexa Fluor 488 secondary antibody (2ug/ml), showing vesicle staining. The nuclear stain is DAPI (blue). Negative control: Unimmunized goat IgG (10ug/ml) followed by Alexa Fluor 488 secondary antibody (2ug/ml).