

## UK Office

### Everest Biotech Ltd

Cherwell Innovation Centre  
77 Heyford Park  
Upper Heyford  
Oxfordshire  
OX25 5HD  
UK

Enquiries:

[info@everestbiotech.com](mailto:info@everestbiotech.com)

Sales:

[sales@everestbiotech.com](mailto:sales@everestbiotech.com)

Tech support:

[support@everestbiotech.com](mailto:support@everestbiotech.com)

Tel: +44 (0)1869 238326

[www.everestbiotech.com](http://www.everestbiotech.com)

**Research Use Only. Not for  
diagnostic or therapeutic use.**

## EB09304 - Goat Anti-CAV3 Antibody

Size: 100µg specific antibody in 200µl



### Target Protein

**Principal Names:** CAV3, caveolin 3, LGMD1C, LQT9, MGC126100, MGC126101, MGC126129, VIP-21, VIP21, M-caveolin

**Official Symbol:** CAV3

**Accession Number(s):** NP\_203123.1

**Human GeneID(s):** [859](#)

**Non-Human GeneID(s):** 12391 (mouse), 29161 (rat)

**Important Comments:** Reported variants represent identical protein (NP\_001225.1; NP\_203123.1).

### Immunogen

Peptide with sequence EHTDLEAQIVKDIH-C, from the N Terminus of the protein sequence according to NP\_203123.1.

Please note the [peptide](#) is available for sale.

### Purification and Storage

Purified from goat serum by ammonium sulphate precipitation followed by antigen affinity chromatography using the immunizing peptide.

Supplied at 0.5 mg/ml in Tris saline, 0.02% sodium azide, pH7.3 with 0.5% bovine serum albumin.

Aliquot and store at -20°C. Minimize freezing and thawing.

### Applications Tested

**Peptide ELISA:** antibody detection limit dilution 1:128000.

**Western blot:** Approx 23kDa band observed in Human Skeletal Muscle and Rat Heart lysates and in preliminary testing of Mouse Skeletal Muscle lysate (calculated MW of 17.3kDa according to Human NP\_203123.1, and 17.4kDa according to , Rat NP\_062028.1 . This molecular weight is routinely observed by other sources. Recommended concentration: 0.1-0.3µg/ml. Primary incubation 1 hour at room temperature.

**IHC:** Paraffin embedded Human Heart. Recommended concentration: 4-6µg/ml.

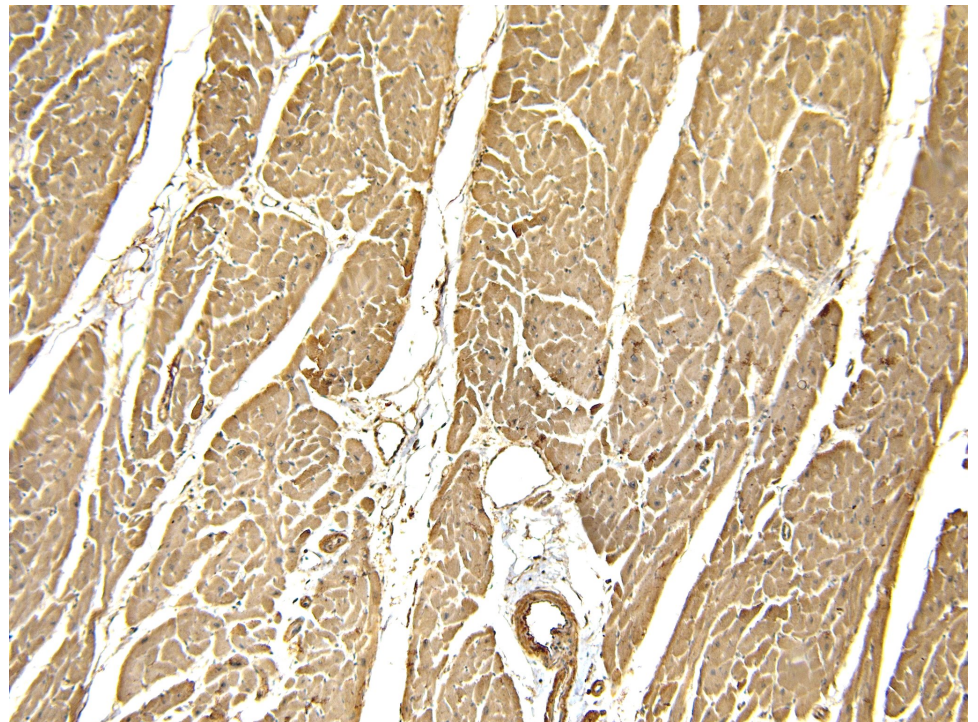
### Species Reactivity

**Tested:** Human, Rat

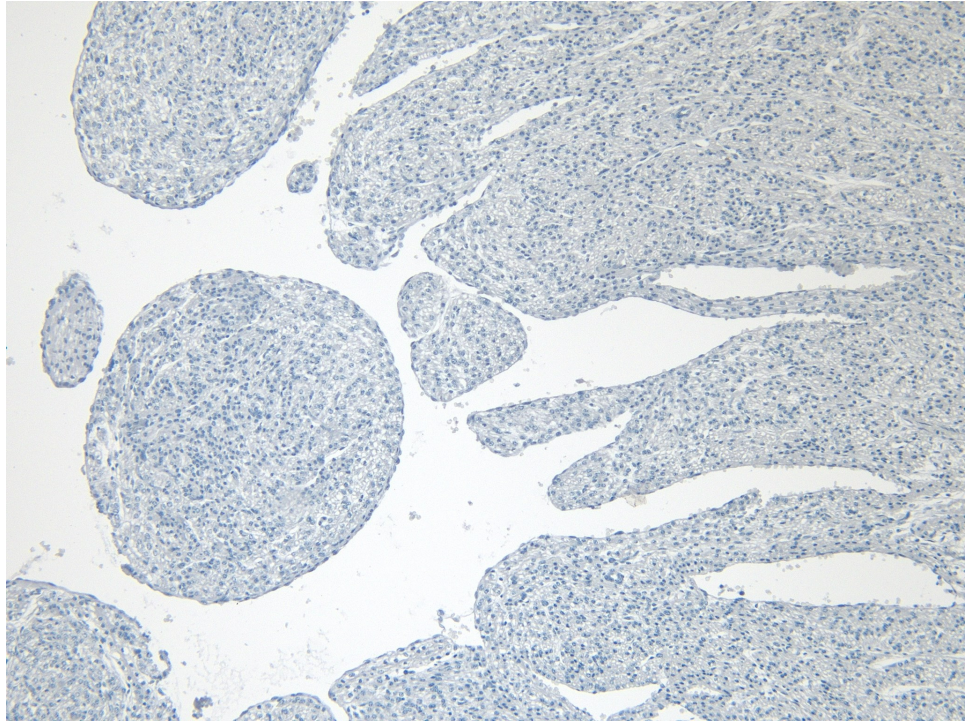
**Expected from sequence similarity:** Human, Mouse, Rat, Dog, Cow, Pig



B09304 (0.1 $\mu$ g/ml) staining of Human Skeletal Muscle (A) and Rat Heart (B) lysate (35 $\mu$ g protein in RIPA buffer). Detected by chemiluminescence.



EB09304 (4 $\mu$ g/ml) staining of paraffin embedded Human Heart. Heat induced antigen retrieval with citrate buffer pH 6, HRP-staining.



EB09304 Negative Control showing staining of paraffin embedded Human Heart, with no primary antibody.