



UK Office

Everest Biotech Ltd

Cherwell Innovation Centre
77 Heyford Park
Upper Heyford
Oxfordshire
OX25 5HD
UK

Enquiries:

info@everestbiotech.com

Sales:

sales@everestbiotech.com

Tech support:

support@everestbiotech.com

Tel: +44 (0)1869 238326

Fax: +44 (0)1869 238327

US Office

Everest Biotech c/o Abcore

405 Maple Street, Suite A106
Ramona,
CA 92065
USA

Inquiries:

info@everestbiotech.com

Sales:

usasales@everestbiotech.com

Tech support:

support@everestbiotech.com

Tel: 888-320-4628 (toll-free)

Fax: 888-841-9041

www.everestbiotech.com

**Research Use Only. Not for
diagnostic or therapeutic use.**

EB09304 - Goat Anti-CAV3 Antibody

Size: 100µg specific antibody in 200µl



Target Protein

Principal Names: CAV3, caveolin 3, LGMD1C, LQT9, MGC126100, MGC126101, MGC126129, VIP-21, VIP21, M-caveolin

Official Symbol: CAV3

Accession Number(s): NP_203123.1

Human GeneID(s): [859](#)

Non-Human GeneID(s): 12391 (mouse), 29161 (rat)

Important Comments: Reported variants represent identical protein (NP_001225.1; NP_203123.1).

Immunogen

Peptide with sequence EHTDLEAQIVKDIH-C, from the N Terminus of the protein sequence according to NP_203123.1.

Please note the [peptide](#) is available for sale.

Purification and Storage

Purified from goat serum by ammonium sulphate precipitation followed by antigen affinity chromatography using the immunizing peptide.

Supplied at 0.5 mg/ml in Tris saline, 0.02% sodium azide, pH7.3 with 0.5% bovine serum albumin.

Aliquot and store at -20°C. Minimize freezing and thawing.

Applications Tested

Peptide ELISA: antibody detection limit dilution 1:128000.

Western blot: Approx 23kDa band observed in Human Skeletal Muscle and Rat Heart lysates and in preliminary testing of Mouse Skeletal Muscle lysate (calculated MW of 17.3kDa according to Human NP_203123.1, and 17.4kDa according to , Rat NP_062028.1 . This molecular weight is routinely observed by other sources. Recommended concentration: 0.1-0.3µg/ml. Primary incubation 1 hour at room temperature.

IHC: Paraffin embedded Human Heart. Recommended concentration: 4-6µg/ml.

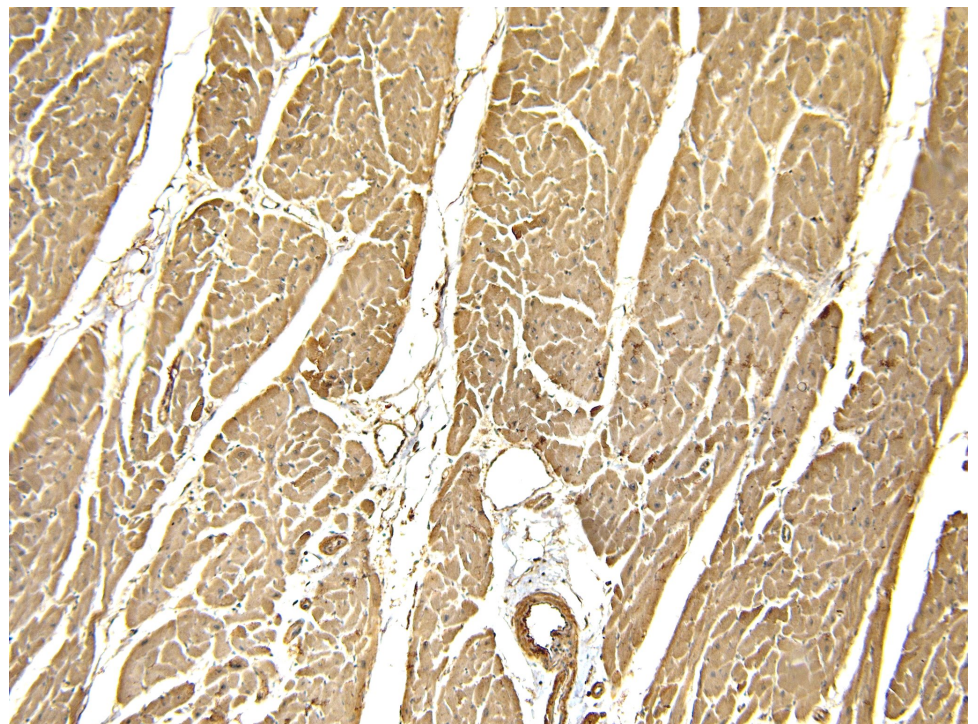
Species Reactivity

Tested: Human, Rat

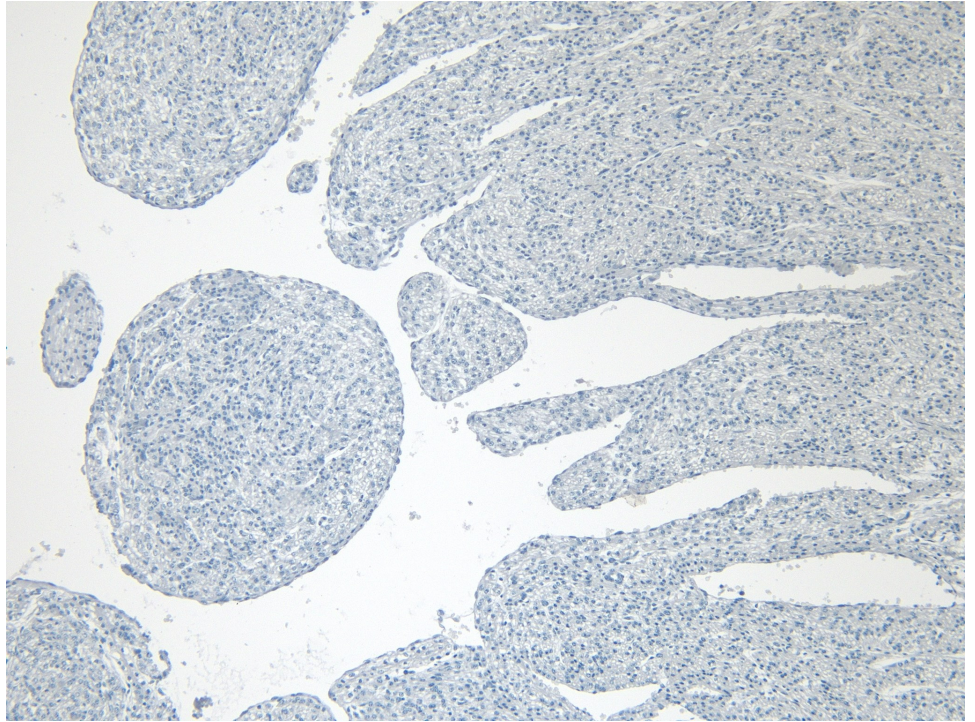
Expected from sequence similarity: Human, Mouse, Rat, Dog, Cow, Pig



B09304 (0.1µg/ml) staining of Human Skeletal Muscle (A) and Rat Heart (B) lysate (35µg protein in RIPA buffer).
Detected by chemiluminescence.



EB09304 (4µg/ml) staining of paraffin embedded Human Heart. Heat induced antigen retrieval with citrate buffer pH 6, HRP-staining.



EB09304 Negative Control showing staining of paraffin embedded Human Heart, with no primary antibody.