



## UK Office

### Everest Biotech Ltd

Cherwell Innovation Centre  
77 Heyford Park  
Upper Heyford  
Oxfordshire  
OX25 5HD  
UK

Enquiries:

[info@everestbiotech.com](mailto:info@everestbiotech.com)

Sales:

[sales@everestbiotech.com](mailto:sales@everestbiotech.com)

Tech support:

[support@everestbiotech.com](mailto:support@everestbiotech.com)

Tel: +44 (0)1869 238326

Fax: +44 (0)1869 238327

## US Office

### Everest Biotech c/o Abcore

405 Maple Street, Suite A106  
Ramona,  
CA 92065  
USA

Inquiries:

[info@everestbiotech.com](mailto:info@everestbiotech.com)

Sales:

[usasales@everestbiotech.com](mailto:usasales@everestbiotech.com)

Tech support:

[support@everestbiotech.com](mailto:support@everestbiotech.com)

Tel: 888-320-4628 (toll-free)

Fax: 888-841-9041

[www.everestbiotech.com](http://www.everestbiotech.com)

**Research Use Only. Not for  
diagnostic or therapeutic use.**

## EB06817-T - Goat Anti-Caveolin 1 Antibody - Trial

Size: 20µg specific antibody in 40µl



### Target Protein

**Principal Names:** CAV1, caveolin 1, caveolae protein, 22kDa, HGNC:1527, CAV, MSTP085, VIP21, caveolae protein, 22-kD, caveolin 1, caveolin 1 caveolae protein, 22kD, caveolin 1, alpha isoform, caveolin 1, beta isoform, cell growth-inhibiting protein 32, BSCL3, CGL3, LCCNS

**Official Symbol:** CAV1

**Accession Number(s):** NP\_001744.2; NP\_001166366.1

**Human GeneID(s):** [857](#)

**Non-Human GeneID(s):** 12389 (mouse), 25404 (rat)

**Important Comments:** This antibody is expected to recognize both reported isoforms (NP\_001744.2; NP\_001166366.1). Reported variants represent identical protein: NP\_001166367.1, NP\_001166368.1, NP\_001166366.1. No cross-reactivity expected to Caveolin 2 and Caveolin 3

### Immunogen

Peptide with sequence C-DELSEKQVYDAH, from the internal region of the protein sequence according to NP\_001744.2; NP\_001166366.1.

Please note the [peptide](#) is available for sale.

### Purification and Storage

Purified from goat serum by ammonium sulphate precipitation followed by antigen affinity chromatography using the immunizing peptide.

Supplied at 0.5 mg/ml in Tris saline, 0.02% sodium azide, pH7.3 with 0.5% bovine serum albumin.

Aliquot and store at -20°C. Minimize freezing and thawing.

### Applications Tested

**Peptide ELISA:** antibody detection limit dilution 1:8000.

**Western blot:** Approx 22kDa band observed in lysates of cell lines A431 and A549 and in Human Heart lysates (calculated MW of 20.5kDa according to NP\_001744.2).

Recommended concentration: 0.001-0.01µg/ml. Primary incubation 1 hour at room temperature. Preliminary testing was unsuccessful on Pig Heart and Spleen, and Mouse and Rat Lung for this particular batch.

**IHC:** Paraffin embedded Human Uterus. Recommended concentration: 2.5µg/ml.

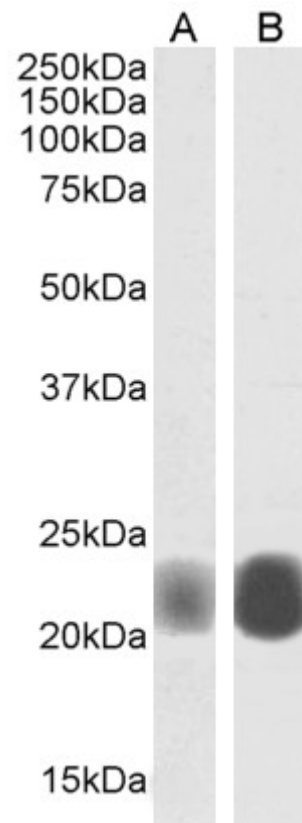
**Immunofluorescence:** Strong expression of the protein seen in the Golgi and membranes of A431 cells and in the cytoplasm and Golgi of U2OS cells. Recommended concentration: 10µg/ml.

**Flow Cytometry:** Flow cytometric analysis of HeLa cells. Recommended concentration: 10ug/ml.

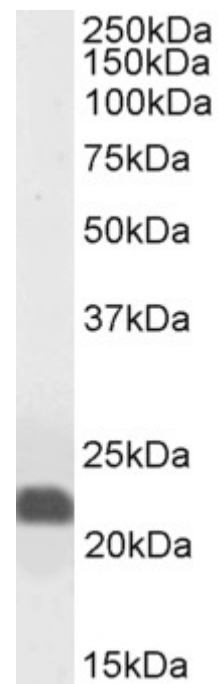
### Species Reactivity

**Tested:** Human

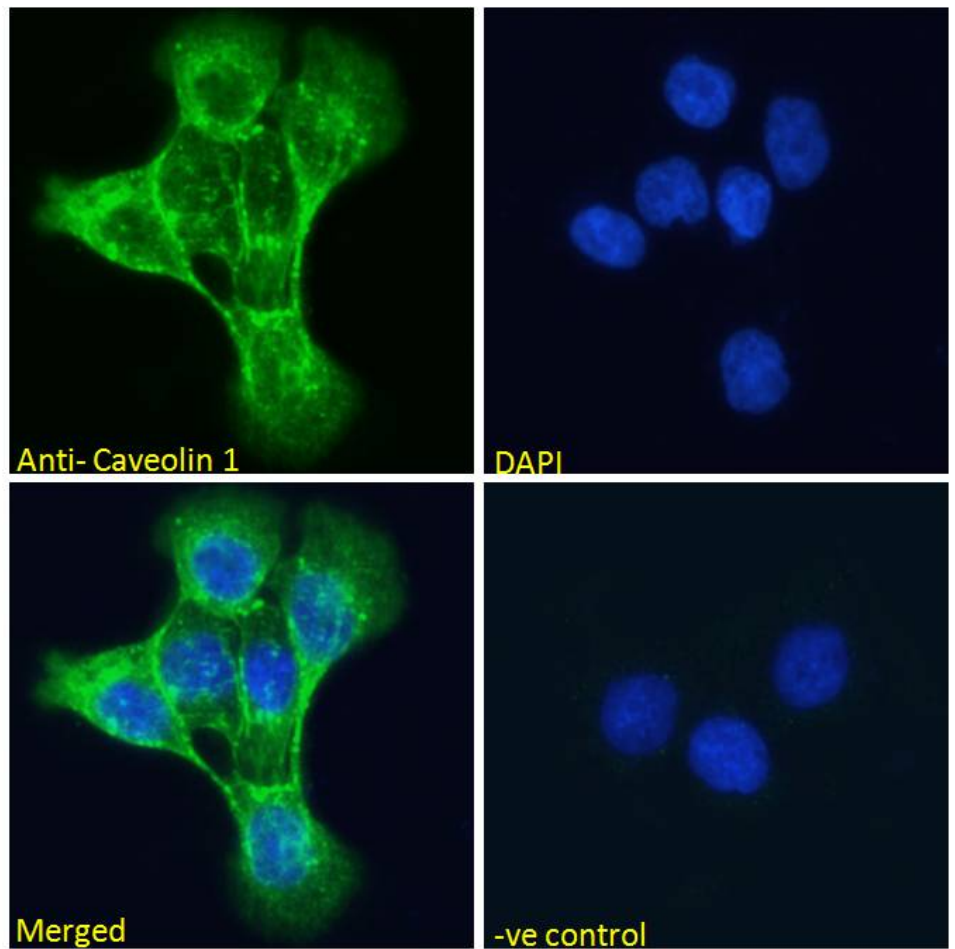
**Expected from sequence similarity:** Human, Mouse, Rat, Dog, Pig



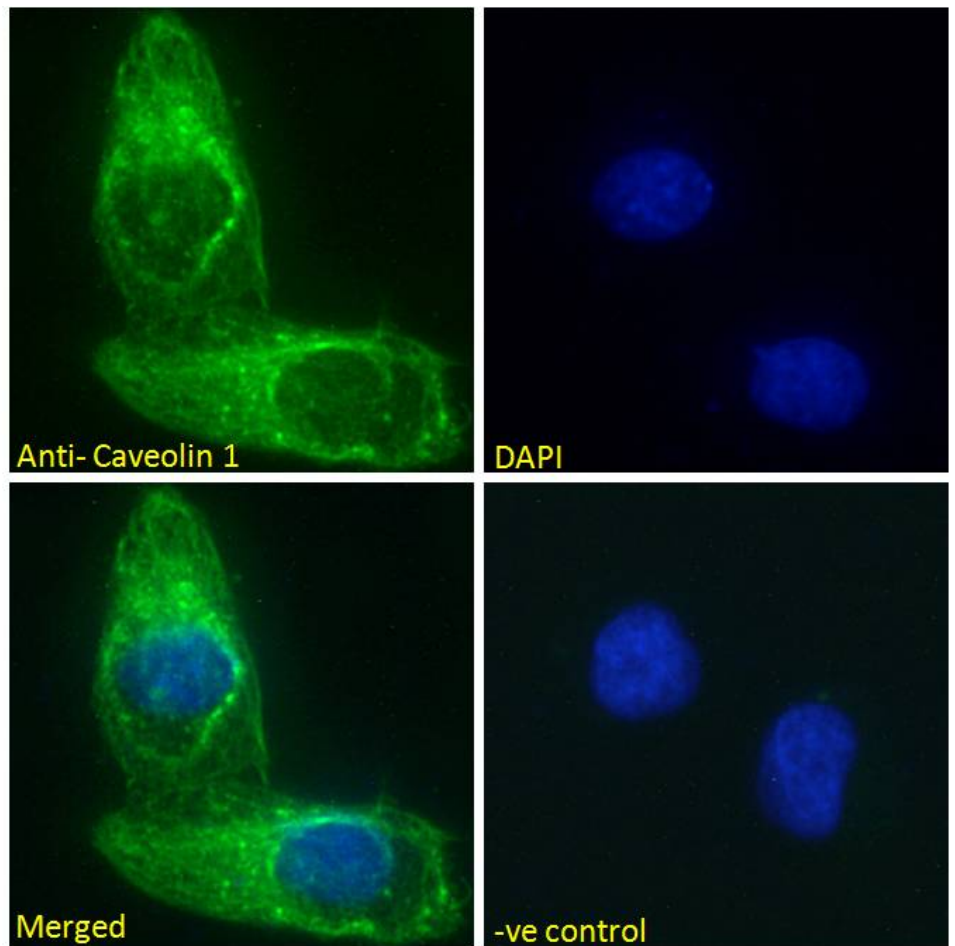
EB06817 (0.003 $\mu$ g/ml) staining of A431 (A) and (0.001 $\mu$ g/ml) A549 cell lysate (35 $\mu$ g protein in RIPA buffer). Detected by chemiluminescence.



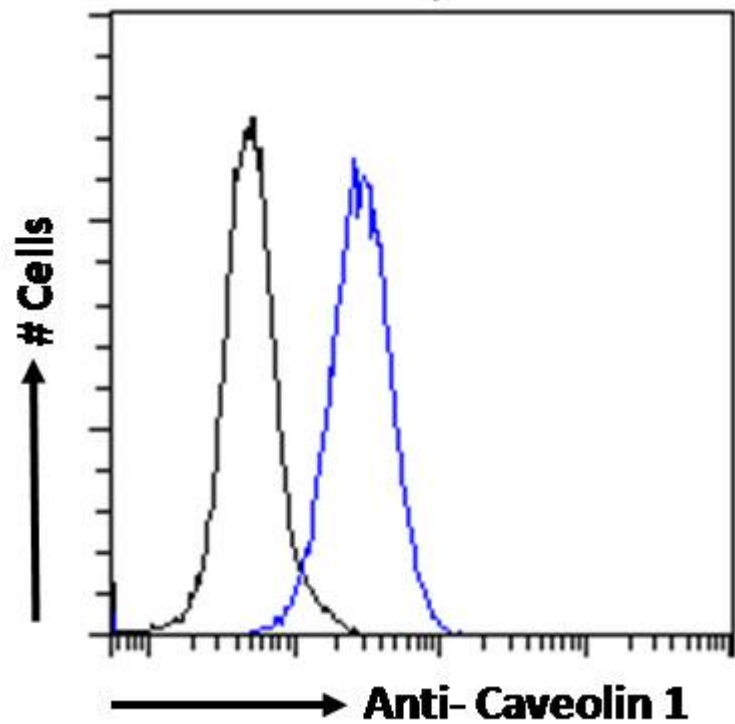
EB06817 (0.003 $\mu$ g/ml) staining of Human Heart lysate (35 $\mu$ g protein in RIPA buffer). Detected by chemiluminescence.



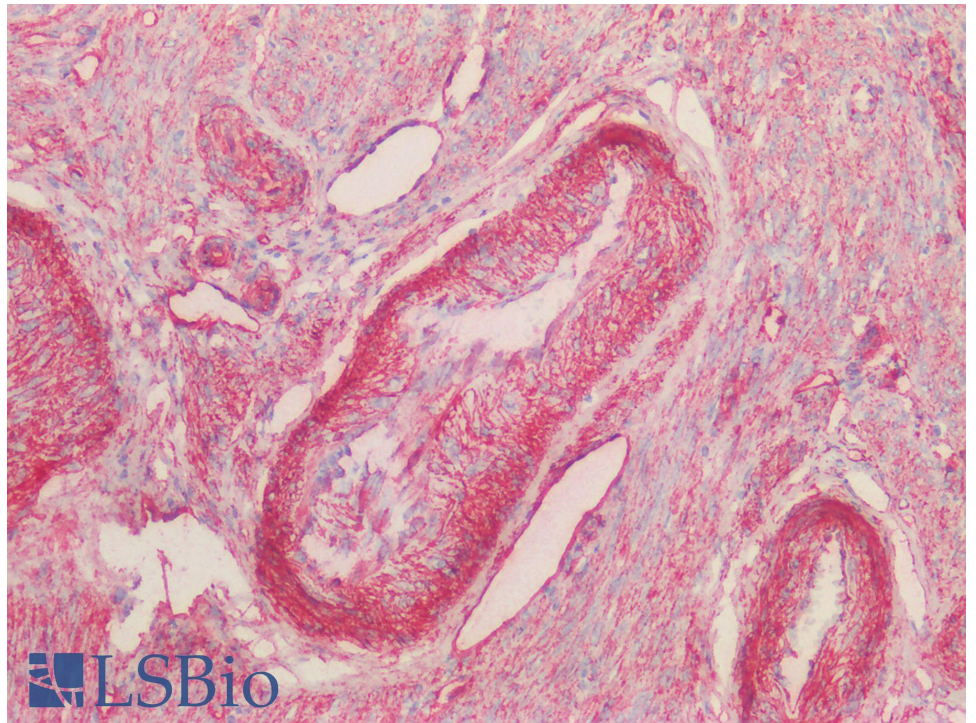
EB06817 Immunofluorescence analysis of paraformaldehyde fixed A431 cells, permeabilized with 0.15% Triton. Primary incubation 1hr (10ug/ml) followed by Alexa Fluor 488 secondary antibody (2ug/ml), showing Golgi and membrane staining. The nuclear stain is DAPI (blue). Negative control: Unimmunized goat IgG (10ug/ml) followed by Alexa Fluor 488 secondary antibody (2ug/ml).



EB06817 Immunofluorescence analysis of paraformaldehyde fixed U2OS cells, permeabilized with 0.15% Triton. Primary incubation 1hr (10ug/ml) followed by Alexa Fluor 488 secondary antibody (2ug/ml), showing Golgi and cytoplasmic staining. The nuclear stain is DAPI (blue). Negative control: Unimmunized goat IgG (10ug/ml) followed by Alexa Fluor 488 secondary antibody (2ug/ml).



EB06817 Flow cytometric analysis of paraformaldehyde fixed HeLa cells (blue line), permeabilized with 0.5% Triton. Primary incubation overnight (10ug/ml) followed by Alexa Fluor 488 secondary antibody (1ug/ml). IgG control: Unimmunized goat IgG (black line) followed by Alexa Fluor 488 secondary antibody.



EB06817 (2.5µg/ml) staining of paraffin embedded Human Uterus. Steamed antigen retrieval with citrate buffer pH 6, AP-staining.