

## UK Office

### Everest Biotech Ltd

Cherwell Innovation Centre  
77 Heyford Park  
Upper Heyford  
Oxfordshire  
OX25 5HD  
UK

Enquiries:

[info@everestbiotech.com](mailto:info@everestbiotech.com)

Sales:

[sales@everestbiotech.com](mailto:sales@everestbiotech.com)

Tech support:

[support@everestbiotech.com](mailto:support@everestbiotech.com)

Tel: +44 (0)1869 238326

[www.everestbiotech.com](http://www.everestbiotech.com)

**Research Use Only. Not for  
diagnostic or therapeutic use.**

## EB10960 - Goat Anti-CB1 (aa44-58) Antibody

Size: 100µg specific antibody in 200µl



### Target Protein

**Principal Names:** CNR1, cannabinoid receptor 1 (brain), CANN6, CB-R, CB1, CB1A, CB1K5, CB1R, CNR, cannabinoid receptor 1, central cannabinoid receptor

**Official Symbol:** CNR1

**Accession Number(s):** NP\_057167.2; NP\_149421.2

**Human GeneID(s):** [1268](#)

**Non-Human GeneID(s):** 12801 (mouse), 25248 (rat)

**Important Comments:** This antibody is expected to recognize both reported isoforms (NP\_057167.2; NP\_149421.2). Reported variants represent identical protein: NP\_001153731.1, NP\_001153732.1, NP\_057167.2, NP\_001153730.1, NP\_001153698.1

### Immunogen

Peptide with sequence C-NITEFYNKSLSSFKE, from the internal region (near N Terminus) of the protein sequence according to NP\_057167.2; NP\_149421.2.

Please note the [peptide](#) is available for sale.

### Purification and Storage

Purified from goat serum by ammonium sulphate precipitation followed by antigen affinity chromatography using the immunizing peptide.

Supplied at 0.5 mg/ml in Tris saline, 0.02% sodium azide, pH7.3 with 0.5% bovine serum albumin.

Aliquot and store at -20°C. Minimize freezing and thawing.

### Applications Tested

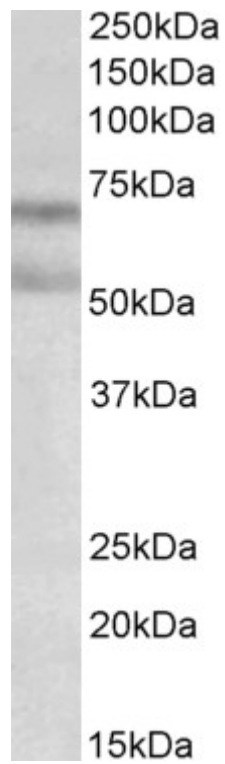
**Peptide ELISA:** antibody detection limit dilution 1:32000.

**Western blot:** Approx 70+55kDa bands observed in Rat Brain lysates (calculated MW of 52.9kDa according to Human NP\_057167.2 and 52.8kDa according to Rat NP\_036916.1). The observed molecular weight corresponds to earlier findings in literature with different antibodies (Porcella et al, Eur J Neurosci. 2000 Mar;12(3):1123-7. PMID: 10762343). Recommended concentration: 1-3µg/ml.

### Species Reactivity

**Tested:** Rat

**Expected from sequence similarity:** Human, Mouse, Rat, Dog, Pig, Cow



EB10960 (0.3 $\mu$ g/ml) staining of Rat Brain lysate (35 $\mu$ g protein in RIPA buffer). Primary incubation was 1 hour. Detected by chemiluminescence.