



## UK Office

### Everest Biotech Ltd

Cherwell Innovation Centre  
77 Heyford Park  
Upper Heyford  
Oxfordshire  
OX25 5HD  
UK

Enquiries:

[info@everestbiotech.com](mailto:info@everestbiotech.com)

Sales:

[sales@everestbiotech.com](mailto:sales@everestbiotech.com)

Tech support:

[support@everestbiotech.com](mailto:support@everestbiotech.com)

Tel: +44 (0)1869 238326

Fax: +44 (0)1869 238327

## US Office

### Everest Biotech c/o Abcore

405 Maple Street, Suite A106  
Ramona,  
CA 92065  
USA

Inquiries:

[info@everestbiotech.com](mailto:info@everestbiotech.com)

Sales:

[usasales@everestbiotech.com](mailto:usasales@everestbiotech.com)

Tech support:

[support@everestbiotech.com](mailto:support@everestbiotech.com)

Tel: 888-320-4628 (toll-free)

Fax: 888-841-9041

[www.everestbiotech.com](http://www.everestbiotech.com)

**Research Use Only. Not for  
diagnostic or therapeutic use.**

## EB10961-T - Goat Anti-CB1 (isoform a) Antibody - Trial

Size: 20µg specific antibody in 40µl



### Target Protein

**Principal Names:** CNR1, cannabinoid receptor 1 (brain), CANN6, CB-R, CB1, CB1A, CB1K5, CB1R, CNR, cannabinoid receptor 1, central cannabinoid receptor

**Official Symbol:** CNR1

**Accession Number(s):** NP\_057167.2

**Human GeneID(s):** [1268](#)

**Non-Human GeneID(s):** 12801 (mouse), 25248 (rat)

**Important Comments:** This antibody is expected to recognize reported isoform a (NP\_057167.2) only. Reported variants represent identical protein: NP\_001153731.1, NP\_001153732.1, NP\_057167.2, NP\_001153730.1, NP\_001153698.1

### Immunogen

Peptide with sequence SNDIQYEDIKGDMS-C, from the N Terminus of the protein sequence according to NP\_057167.2.

Please note the [peptide](#) is available for sale.

### Purification and Storage

Purified from goat serum by ammonium sulphate precipitation followed by antigen affinity chromatography using the immunizing peptide.

Supplied at 0.5 mg/ml in Tris saline, 0.02% sodium azide, pH7.3 with 0.5% bovine serum albumin.

Aliquot and store at -20°C. Minimize freezing and thawing.

### Applications Tested

**Peptide ELISA:** antibody detection limit dilution 1:64000.

**Western blot:** Approx 52kDa band observed in lysates of cell lines A549 and NIH3T3 (calculated MW of 52.9kDa according to Human NP\_057167.2 and 52.8kDa according to Mouse NP\_031752.1). Recommended concentration: 0.3-1µg/ml. Primary incubation was 1 hour. This antibody has been successfully used in WB on Human: 33049367 and <http://doi.org/10.1089/can.2020.0107>.

### Species Reactivity

**Tested:** Human, Mouse

**Expected from sequence similarity:** Human, Mouse, Rat, Dog, Cow

### Specific References

**This antibody has been successfully used in WB on Human:**

Melissa L. Kozakiewicz, Jie Zhang, Sandra Leone-Kabler, Liliya M. Yamaleyeva, Anna G. McDonald, Brian C. Brost and Allyn C. Howlett

Differential Expression of CB1 Cannabinoid Receptor and Cannabinoid Receptor Interacting Protein 1a in Labor

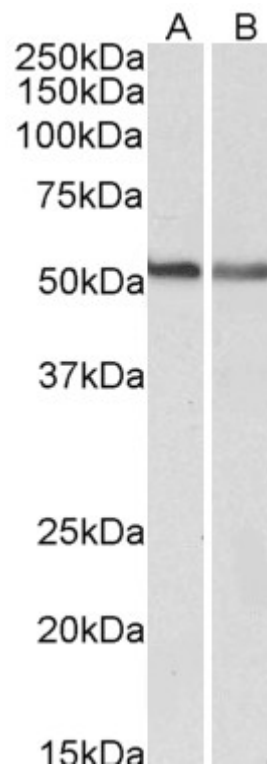
Cannabis and Cannabinoid Research (April 2021) <http://doi.org/10.1089/can.2020.0107>  
PMID: 33998898

**This antibody has been successfully used in WB on Human:**

Erica L Lyons, Sandra Leone-Kabler, Alexander L Kovach, Brian F Thomas, Allyn C Howlett

Cannabinoid receptor subtype influence on neuritogenesis in human SH-SY5Y cells  
Mol Cell Neurosci. 2020 Oct 10;109:103566.





EB10961 (0.3 $\mu$ g/ml) staining of A549 (A) and NIH3T3 (B) lysates (35 $\mu$ g protein in RIPA buffer). Detected by chemiluminescence.