



## UK Office

### Everest Biotech Ltd

Cherwell Innovation Centre  
77 Heyford Park  
Upper Heyford  
Oxfordshire  
OX25 5HD  
UK

Enquiries:

[info@everestbiotech.com](mailto:info@everestbiotech.com)

Sales:

[sales@everestbiotech.com](mailto:sales@everestbiotech.com)

Tech support:

[support@everestbiotech.com](mailto:support@everestbiotech.com)

Tel: +44 (0)1869 238326

Fax: +44 (0)1869 238327

## US Office

### Everest Biotech c/o Abcore

405 Maple Street, Suite A106  
Ramona,  
CA 92065  
USA

Inquiries:

[info@everestbiotech.com](mailto:info@everestbiotech.com)

Sales:

[usasales@everestbiotech.com](mailto:usasales@everestbiotech.com)

Tech support:

[support@everestbiotech.com](mailto:support@everestbiotech.com)

Tel: 888-320-4628 (toll-free)

Fax: 888-841-9041

[www.everestbiotech.com](http://www.everestbiotech.com)

**Research Use Only. Not for  
diagnostic or therapeutic use.**

## EB10862 - Goat Anti-CBARA1 (aa113-126) Antibody

Size: 100µg specific antibody in 200µl



### Target Protein

**Principal Names:** CBARA1, calcium binding atopy-related autoantigen 1, CALC, DKFZp564C246, EFHA3, FLJ12684, OTTHUMP00000019787, ara CALC, atopy related autoantigen, calcium-binding atopy-related autoantigen 1

**Official Symbol:** MICU1

**Accession Number(s):** NP\_006068.2; NP\_001182447.1

**Human GeneID(s):** [10367](#)

**Non-Human GeneID(s):** 216001 (mouse), 365567 (rat)

**Important Comments:** This antibody is expected to recognize reported isoforms 1 and 2 (NP\_006068.2; NP\_001182447.1).

### Immunogen

Peptide with sequence C-EYENRIRAYSTPDK, from the internal region of the protein sequence according to NP\_006068.2; NP\_001182447.1.

Please note the [peptide](#) is available for sale.

### Purification and Storage

Purified from goat serum by ammonium sulphate precipitation followed by antigen affinity chromatography using the immunizing peptide.

Supplied at 0.5 mg/ml in Tris saline, 0.02% sodium azide, pH7.3 with 0.5% bovine serum albumin.

Aliquot and store at -20°C. Minimize freezing and thawing.

### Applications Tested

**Peptide ELISA:** antibody detection limit dilution 1:32000.

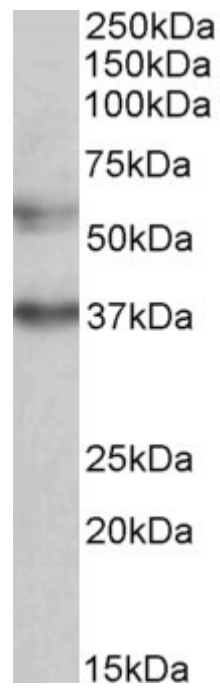
**Western blot:** Approx 55kDa band observed in lysates of cell line K562 (calculated MW of 54.6kDa according to NP\_006068.2). Recommended concentration: 0.5-2µg/ml. An additional band of unknown identity was also consistently observed at 37kDa. This band was successfully blocked by incubation with the immunizing peptide.

**IHC:** Paraffin embedded Human Lung. Recommended concentration: 3.75µg/ml.

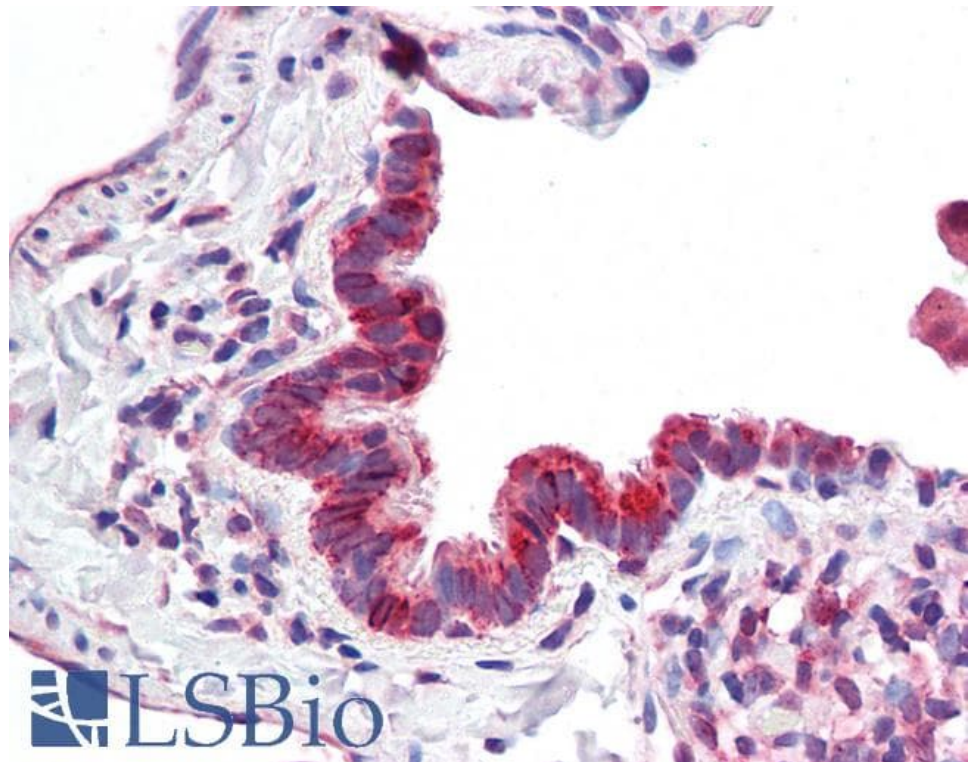
### Species Reactivity

**Tested:** Human

**Expected from sequence similarity:** Human, Mouse, Rat, Dog, Pig, Cow



EB10862 (0.5µg/ml) staining of K562 lysate (35µg protein in RIPA buffer). Primary incubation was 1 hour.  
Detected by chemiluminescence.



EB10862 (3.75µg/ml) staining of paraffin embedded Human Lung. Steamed antigen retrieval with citrate buffer pH 6, AP-staining.