

UK Office

Everest Biotech Ltd

Cherwell Innovation Centre
77 Heyford Park
Upper Heyford
Oxfordshire
OX25 5HD
UK

Enquiries:

info@everestbiotech.com

Sales:

sales@everestbiotech.com

Tech support:

support@everestbiotech.com

Tel: +44 (0)1869 238326

www.everestbiotech.com

**Research Use Only. Not for
diagnostic or therapeutic use.**

EB12158 - Goat Anti-CBFB Antibody

Size: 100µg specific antibody in 200µl



Target Protein

Principal Names: CBFB, core-binding factor, beta subunit, PEBP2B, CBF-beta, PEA2-beta, PEBP2-beta, SL3-3 enhancer factor 1 beta subunit, SL3-3 enhancer factor 1 subunit beta, SL3/AKV core-binding factor beta subunit, core-binding factor subunit beta, polyomavirus enhancer binding protein 2, beta subunit, polyomavirus enhancer-binding protein 2 beta subunit

Official Symbol: CBFB

Accession Number(s): NP_074036.1; NP_001746.1

Human GeneID(s): [865](#)

Non-Human GeneID(s): 12400 (mouse)

Important Comments: This antibody is expected to recognize reported isoform 1 (NP_074036.1) only, however it is expected to recognize reported mouse isoforms 1 (NP_071704.3), 2 (NP_001154928.1) and 3 (NP_001154929.1).

Immunogen

Peptide with sequence C-EARRQQDPSPGSN, from the internal region (near C Terminus) of the protein sequence according to NP_074036.1; NP_001746.1.

Please note the [peptide](#) is available for sale.

Purification and Storage

Purified from goat serum by ammonium sulphate precipitation followed by antigen affinity chromatography using the immunizing peptide.

Supplied at 0.5 mg/ml in Tris saline, 0.02% sodium azide, pH7.3 with 0.5% bovine serum albumin.

Aliquot and store at -20°C. Minimize freezing and thawing.

Applications Tested

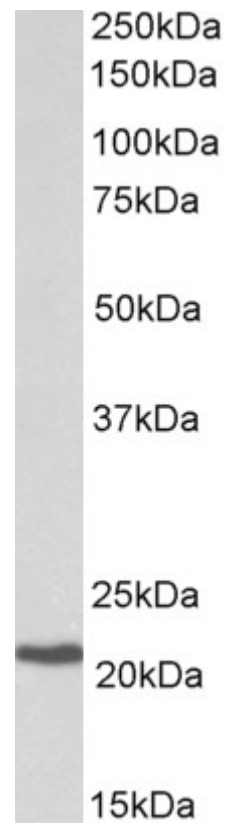
Peptide ELISA: antibody detection limit dilution 1:2000.

Western blot: Approx 22kDa band observed in lysates of cell line Daudi (calculated MW of 22.0kDa according to NP_074036.1). Recommended concentration: 0.3-1µg/ml.

Species Reactivity

Tested: Human

Expected from sequence similarity: Human, Mouse, Dog



EB12158 (0.3 μ g/ml) staining of Daudi lysate (35 μ g protein in RIPA buffer). Primary incubation was 1 hour.
Detected by chemiluminescence.