



Everest Biotech Ltd
Cherwell Innovation Centre
77 Heyford Park
Upper Heyford
Oxfordshire
OX25 5HD, United Kingdom

everestbiotech.com

sales@everestbiotech.com

support@everestbiotech.com

Tel +44 1869 238326

Fax +44 1869 238327

Research Use Only. Not for diagnostic or therapeutic use.

Storage: For long-term storage keep aliquots at -20°C. (Store no longer than 12 months at 4°C). Minimize freezing and thawing.

EB06958 - Goat Anti-CBX1 / HP1-Beta Antibody

Size: 100µg specific antibody in 200µl



Target Protein

Principal Names: modifier 1 protein, heterochromatin protein 1-beta, p25beta, HP1Hsbeta, heterochromatin protein p25 beta, chromobox homolog 1 (Drosophila HP1 beta), MOD1, M31, HP1Hs-beta, CBX, HGNC:1551, chromobox homolog 1 (HP1 beta homolog Drosophila), HP1-BETA, CBX1

Official Symbol: CBX1

Accession Number(s): NP_006798.1; NP_001120700.1

Human GeneID(s): [10951](#)

Non-Human GeneID(s): 12412 (mouse), 360609 (rat)

Important Comments: Variants (NP_006798.1; NP_001120700.1) encode the same protein.

Immunogen

Peptide with sequence C-QSQKTAHETDKSE, from the internal region of the protein sequence according to NP_006798.1; NP_001120700.1.

Please note the [peptide](#) is available for sale.

Purification and Storage

Purified from goat serum by ammonium sulphate precipitation followed by antigen affinity chromatography using the immunizing peptide.

Supplied at 0.5 mg/ml in Tris saline, 0.02% sodium azide, pH7.3 with 0.5% bovine serum albumin.

Aliquot and store at -20°C. Minimize freezing and thawing.

Applications Tested

Peptide ELISA: antibody detection limit dilution 1:32000.

Western blot: Approx. 25kDa band observed in lysates of A431, HeLa and HepG2 (calculated MW of 25kDa according to NP_006798.1). Recommended concentration: 0.3-1.0 µg/ml.

IHC: In paraffin embedded Human Placenta shows strong nuclear staining in trophoblasts. Recommended concentration, 2-3µg/ml.

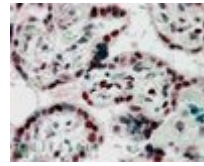
Species Reactivity

Tested: Human

Expected from sequence similarity: Human, Mouse, Rat, Dog, Cow



EB06958 (0.3 μ g/ml) staining of A431 lysate (35 μ g protein in RIPA buffer). Primary incubation was 1 hour. Detected by chemiluminescence.



EB06958 (2.5 μ g/ml) staining of paraffin embedded Human Placenta. Steamed antigen retrieval with citrate buffer pH 6, AP-staining.