



Everest Biotech Ltd
Cherwell Innovation Centre
77 Heyford Park
Upper Heyford
Oxfordshire
OX25 5HD, United Kingdom

everestbiotech.com

sales@everestbiotech.com

support@everestbiotech.com

Tel +44 1869 238326

Fax +44 1869 238327

**Research Use Only. Not for
diagnostic or therapeutic use.**

Storage: For long-term storage
keep aliquots at -20°C. (Store no
longer than 12 months at 4°C).
Minimize freezing and thawing.

EB06959-T - Goat Anti-CBX3 / HP1 Gamma Antibody - Trial

Size: 20µg specific antibody in 40µl



Target Protein

Principal Names: heterochromatin-like protein 1, heterochromatin protein HP1 gamma, chromobox homolog 3 (Drosophila HP1 gamma), chromobox homolog 3, HP1 gamma homolog, HP1Hs-gamma, HECH, HGNC:1553, chromobox homolog 3 (HP1 gamma homolog, Drosophila), HP1-GAMMA, CBX3

Official Symbol: CBX3

Accession Number(s): NP_009207.2; NP_057671.2

Human GeneID(s): [11335](#)

Non-Human GeneID(s): 12417 (mouse), 297093 (rat)

Important Comments: No cross-reactivity expected with HP1-alpha and HP1-beta. NP_009207.2 and NP_057671.2 represent same protein.

Immunogen

Peptide with sequence C-EAFLNSQKAGKEKD, from the internal region of the protein sequence according to NP_009207.2; NP_057671.2.

Please note the [peptide](#) is available for sale.

Purification and Storage

Purified from goat serum by ammonium sulphate precipitation followed by antigen affinity chromatography using the immunizing peptide.

Supplied at 0.5 mg/ml in Tris saline, 0.02% sodium azide, pH7.3 with 0.5% bovine serum albumin.

Aliquot and store at -20°C. Minimize freezing and thawing.

Applications Tested

Peptide ELISA: antibody detection limit dilution 1:32000.

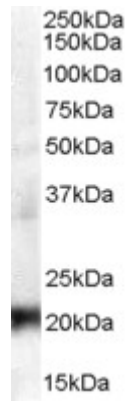
Western blot: Approx. 20kDa band observed in lysates of cell lines A431, HeLa, HepG2, NIH3T3 and NSO (calculated MW of 20.8kDa according to NP_009207.2 and NP_057671.2). Recommended concentration: 0.3-1.0 µg/ml.

IHC: In paraffin embedded Human Placenta shows strong nuclear staining in trophoblasts. Recommended concentration, 2-3µg/ml.

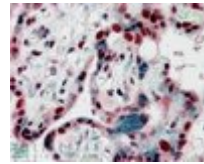
Species Reactivity

Tested: Human, Mouse

Expected from sequence similarity: Human, Mouse, Rat, Dog



EB06959 (0.3 μ g/ml) staining of A431 lysate (35 μ g protein in RIPA buffer). Primary incubation was 1 hour. Detected by chemiluminescence.



EB06959 (2.5 μ g/ml) staining of paraffin embedded Human Placenta. Steamed antigen retrieval with citrate buffer pH 6, AP-staining.