



## UK Office

### Everest Biotech Ltd

Cherwell Innovation Centre  
77 Heyford Park  
Upper Heyford  
Oxfordshire  
OX25 5HD  
UK

Enquiries:

[info@everestbiotech.com](mailto:info@everestbiotech.com)

Sales:

[sales@everestbiotech.com](mailto:sales@everestbiotech.com)

Tech support:

[support@everestbiotech.com](mailto:support@everestbiotech.com)

Tel: +44 (0)1869 238326

Fax: +44 (0)1869 238327

## US Office

### Everest Biotech c/o Abcore

405 Maple Street, Suite A106  
Ramona,  
CA 92065  
USA

Inquiries:

[info@everestbiotech.com](mailto:info@everestbiotech.com)

Sales:

[usasales@everestbiotech.com](mailto:usasales@everestbiotech.com)

Tech support:

[support@everestbiotech.com](mailto:support@everestbiotech.com)

Tel: 888-320-4628 (toll-free)

Fax: 888-841-9041

[www.everestbiotech.com](http://www.everestbiotech.com)

**Research Use Only. Not for  
diagnostic or therapeutic use.**

## EB06957-B - Goat Anti-CBX5 / HP1-Alpha, biotinylated Antibody

Size: 100µg specific antibody in 200µl



### Target Protein

**Principal Names:** CBX5, chromobox homolog 5, HEL25, HP1, HP1A, HP1 alpha homolog, HP1-ALPHA, HP1Hs alpha, antigen p25, chromobox homolog 5 (HP1 alpha homolog, Drosophila), epididymis luminal protein 25, heterochromatin protein 1 homolog alpha, heterochromatin protein 1-alpha

**Official Symbol:** CBX5

**Accession Number(s):** NP\_036249.1

**Human GeneID(s):** [23468](#)

**Important Comments:** Reported variants represent identical protein: NP\_036249.1, NP\_001120793.1, NP\_001120794.1

### Immunogen

Peptide with sequence C-NKRKSNFSNSADDIK., from the internal region of the protein sequence according to NP\_036249.1.

Please note the [peptide](#) is available for sale.

### Purification and Storage

Purified from goat serum by ammonium sulphate precipitation followed by antigen affinity chromatography using the immunizing peptide.

Supplied at 0.5 mg/ml in Tris saline, 0.02% sodium azide, pH7.3 with 0.5% bovine serum albumin.

Aliquot and store at -20°C. Minimize freezing and thawing.

### Applications Tested

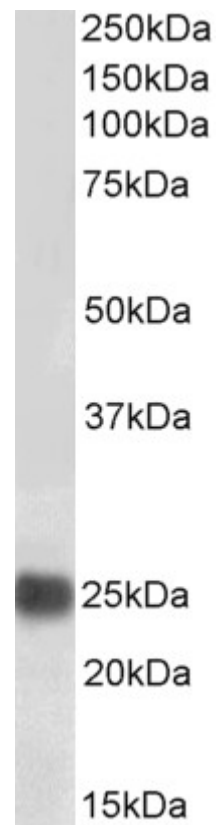
**Peptide ELISA:** antibody detection limit dilution 1:128000.

**Western blot:** Approx 25kDa band observed in HeLa lysates (calculated MW of 22.2kDa according to NP\_036249.1). See non-biotinylated parental product's datasheet for further QC data. Recommended concentration: 0.1-0.3µg/ml.

### Species Reactivity

**Tested:** Human

**Expected from sequence similarity:** Human, Mouse, Dog



Biotinylated EB06957 (0.1µg/ml) staining of HeLa lysate (35µg protein in RIPA buffer). Primary incubation was 1 hour. Detected by chemiluminescence, using streptavidin-HRP and using NAP blocker as a substitute for skimmed milk.