



UK Office

Everest Biotech Ltd

Cherwell Innovation Centre
77 Heyford Park
Upper Heyford
Oxfordshire
OX25 5HD
UK

Enquiries:

info@everestbiotech.com

Sales:

sales@everestbiotech.com

Tech support:

support@everestbiotech.com

Tel: +44 (0)1869 238326

Fax: +44 (0)1869 238327

US Office

Everest Biotech c/o Abcore

405 Maple Street, Suite A106
Ramona,
CA 92065
USA

Inquiries:

info@everestbiotech.com

Sales:

usasales@everestbiotech.com

Tech support:

support@everestbiotech.com

Tel: 888-320-4628 (toll-free)

Fax: 888-841-9041

www.everestbiotech.com

**Research Use Only. Not for
diagnostic or therapeutic use.**

EB06957-B - Goat Anti-CBX5 / HP1-Alpha, biotinylated Antibody

Size: 100µg specific antibody in 200µl



Target Protein

Principal Names: CBX5, chromobox homolog 5, HEL25, HP1, HP1A, HP1 alpha homolog, HP1-ALPHA, HP1Hs alpha, antigen p25, chromobox homolog 5 (HP1 alpha homolog, Drosophila), epididymis luminal protein 25, heterochromatin protein 1 homolog alpha, heterochromatin protein 1-alpha

Official Symbol: CBX5

Accession Number(s): NP_036249.1

Human GeneID(s): [23468](#)

Important Comments: Reported variants represent identical protein: NP_036249.1, NP_001120793.1, NP_001120794.1

Immunogen

Peptide with sequence C-NKRKSNFSNSADDIK., from the internal region of the protein sequence according to NP_036249.1.

Please note the [peptide](#) is available for sale.

Purification and Storage

Purified from goat serum by ammonium sulphate precipitation followed by antigen affinity chromatography using the immunizing peptide.

Supplied at 0.5 mg/ml in Tris saline, 0.02% sodium azide, pH7.3 with 0.5% bovine serum albumin.

Aliquot and store at -20°C. Minimize freezing and thawing.

Applications Tested

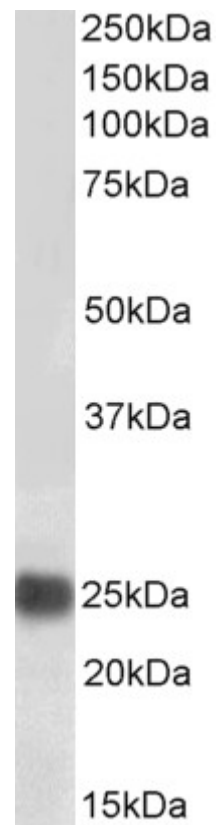
Peptide ELISA: antibody detection limit dilution 1:128000.

Western blot: Approx 25kDa band observed in HeLa lysates (calculated MW of 22.2kDa according to NP_036249.1). See non-biotinylated parental product's datasheet for further QC data. Recommended concentration: 0.1-0.3µg/ml.

Species Reactivity

Tested: Human

Expected from sequence similarity: Human, Mouse, Dog



Biotinylated EB06957 (0.1µg/ml) staining of HeLa lysate (35µg protein in RIPA buffer). Primary incubation was 1 hour. Detected by chemiluminescence, using streptavidin-HRP and using NAP blocker as a substitute for skimmed milk.