



## UK Office

### Everest Biotech Ltd

Cherwell Innovation Centre  
77 Heyford Park  
Upper Heyford  
Oxfordshire  
OX25 5HD  
UK

Enquiries:

[info@everestbiotech.com](mailto:info@everestbiotech.com)

Sales:

[sales@everestbiotech.com](mailto:sales@everestbiotech.com)

Tech support:

[support@everestbiotech.com](mailto:support@everestbiotech.com)

Tel: +44 (0)1869 238326

Fax: +44 (0)1869 238327

## US Office

### Everest Biotech c/o Abcore

405 Maple Street, Suite A106  
Ramona,  
CA 92065  
USA

Inquiries:

[info@everestbiotech.com](mailto:info@everestbiotech.com)

Sales:

[usasales@everestbiotech.com](mailto:usasales@everestbiotech.com)

Tech support:

[support@everestbiotech.com](mailto:support@everestbiotech.com)

Tel: 888-320-4628 (toll-free)

Fax: 888-841-9041

[www.everestbiotech.com](http://www.everestbiotech.com)

**Research Use Only. Not for  
diagnostic or therapeutic use.**

## EB12006 - Goat Anti-CCDC3 (aa134-148) Antibody

Size: 100µg specific antibody in 200µl



### Target Protein

**Principal Names:** CCDC3, coiled-coil domain containing 3, coiled-coil domain-containing protein 3, fat/vessel-derived secretory protein, favine

**Official Symbol:** CCDC3

**Accession Number(s):** NP\_113643.1

**Human GeneID(s):** [83643](#)

**Non-Human GeneID(s):** 74186 (mouse), 498795 (rat)

### Immunogen

Peptide with sequence C-PHGVNFQDAIFPDTQ, from the internal region of the protein sequence according to NP\_113643.1.

Please note the [peptide](#) is available for sale.

### Purification and Storage

Purified from goat serum by ammonium sulphate precipitation followed by antigen affinity chromatography using the immunizing peptide.

Supplied at 0.5 mg/ml in Tris saline, 0.02% sodium azide, pH7.3 with 0.5% bovine serum albumin.

Aliquot and store at -20°C. Minimize freezing and thawing.

### Applications Tested

**Peptide ELISA:** antibody detection limit dilution 1:64000.

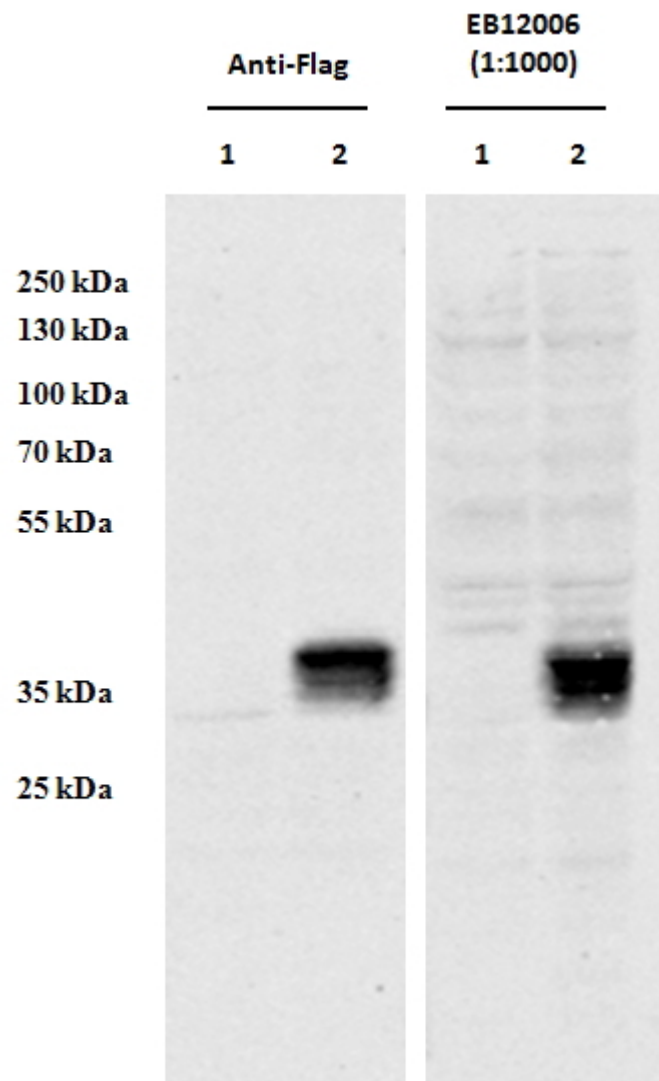
**Western blot:** In transfected HEK293 transiently expressing Human CCDC3 (DYKDDDDK tagged), a band of approx. 36kDa is observed. No bands are observed in mock-transfected HEK293 and the same band is observed using anti-DYKDDDDK antibody. Recommended concentration: 0.5-1µg/ml.

**IHC:** Paraffin embedded Human Colon. Recommended concentration: 5µg/ml.

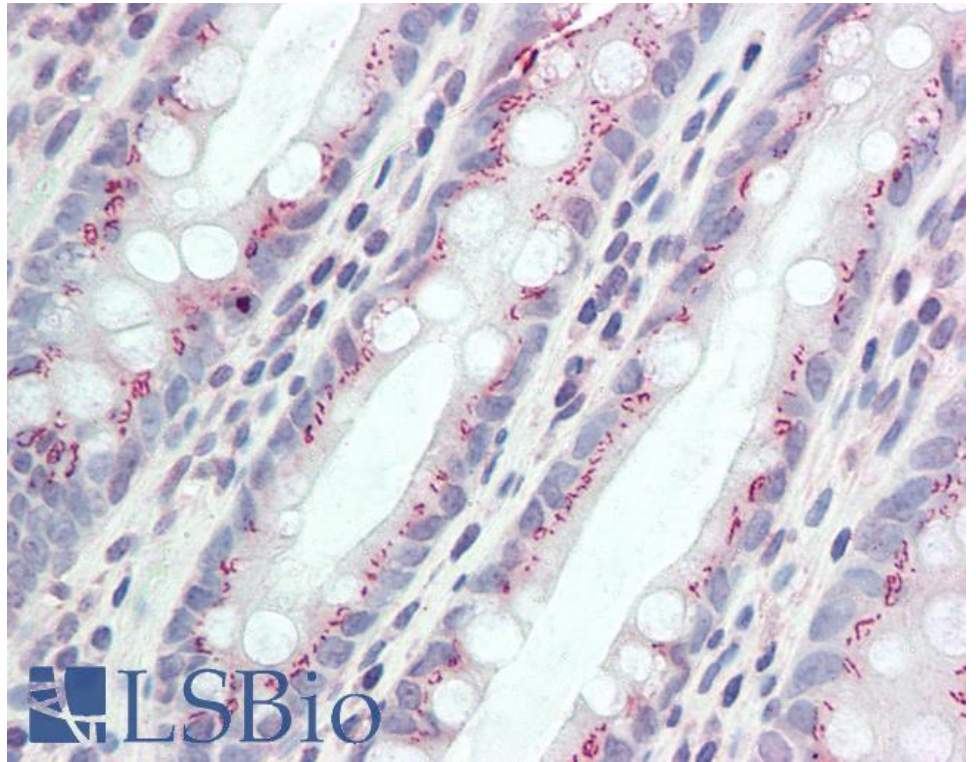
### Species Reactivity

**Tested:** Human

**Expected from sequence similarity:** Human, Mouse, Rat, Dog, Pig, Cow



HEK293 overexpressing Human CCDC3 with C-terminal tag (DYKDDDDK) and probed with anti-DYKDDDDK in the left panel and with EB12006 (0.5ug/ml) in the right panel (empty vector transfection in first lanes). Data obtained from Dr. YangXin Fu, Dept Oncology, University of Alberta, Edmonton, Canada.



EB12006 (5µg/ml) staining of paraffin embedded Human Colon. Steamed antigen retrieval with citrate buffer pH 6, AP-staining.