



UK Office

Everest Biotech Ltd

Cherwell Innovation Centre
77 Heyford Park
Upper Heyford
Oxfordshire
OX25 5HD
UK

Enquiries:

info@everestbiotech.com

Sales:

sales@everestbiotech.com

Tech support:

support@everestbiotech.com

Tel: +44 (0)1869 238326

Fax: +44 (0)1869 238327

US Office

Everest Biotech c/o Abcore

405 Maple Street, Suite A106
Ramona,
CA 92065
USA

Inquiries:

info@everestbiotech.com

Sales:

usasales@everestbiotech.com

Tech support:

support@everestbiotech.com

Tel: 888-320-4628 (toll-free)

Fax: 888-841-9041

www.everestbiotech.com

**Research Use Only. Not for
diagnostic or therapeutic use.**

EB06768 - Goat Anti-CCKAR Antibody

Size: 100µg specific antibody in 200µl



Target Protein

Principal Names: CCKAR, cholecystokinin A receptor, HGNC:1570, CCK-A, CCK1-R, CCKRA, cholecystokinin-1 receptor, cholecystokinin type-A receptor

Official Symbol: CCKAR

Accession Number(s): NP_000721.1

Human GeneID(s): [886](#)

Non-Human GeneID(s): 12425 (mouse), 24889 (rat)

Immunogen

Peptide with sequence C-FEASQKKSARKERKPST, from the internal region of the protein sequence according to NP_000721.1.

Please note the [peptide](#) is available for sale.

Purification and Storage

Purified from goat serum by ammonium sulphate precipitation followed by antigen affinity chromatography using the immunizing peptide.

Supplied at 0.5 mg/ml in Tris saline, 0.02% sodium azide, pH7.3 with 0.5% bovine serum albumin.

Aliquot and store at -20°C. Minimize freezing and thawing.

Applications Tested

Peptide ELISA: antibody detection limit dilution 1:128000.

IHC: In paraffin embedded Human Pancreas shows strong staining in Islets of Langerhans. Recommended concentration, 2-4µg/ml.

Species Reactivity

Tested: Human

Expected from sequence similarity: Human

Specific Reference

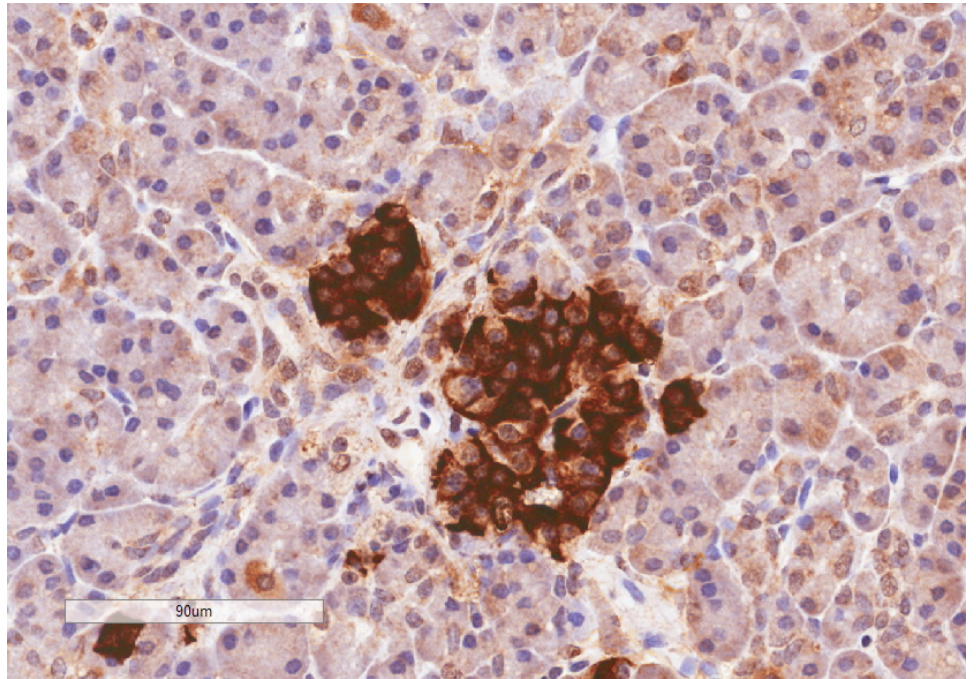
This antibody (previous batch) has been successfully used in ICC/IF on RIN-14B cells:

El-Kouhen K, Morisset J.

Control of somatostatin (SS) secretion by CCK-1 and CCK-2 receptors' occupation in RIN-14B cells, a rat pancreatic islet cell line.

Pancreas. 2010 Mar;39(2):127-34.

PMID: 19959964



EB06768 (4μg/ml) staining of paraffin embedded Human Pancreas. Microwaved antigen retrieval with citrate buffer pH 6, HRP-staining.