



## UK Office

### Everest Biotech Ltd

Cherwell Innovation Centre  
77 Heyford Park  
Upper Heyford  
Oxfordshire  
OX25 5HD  
UK

Enquiries:

[info@everestbiotech.com](mailto:info@everestbiotech.com)

Sales:

[sales@everestbiotech.com](mailto:sales@everestbiotech.com)

Tech support:

[support@everestbiotech.com](mailto:support@everestbiotech.com)

Tel: +44 (0)1869 238326

[www.everestbiotech.com](http://www.everestbiotech.com)

**Research Use Only. Not for  
diagnostic or therapeutic use.**

## EB10008 - Goat Anti-CCL21 Antibody

Size: 100µg specific antibody in 200µl



### Target Protein

**Principal Names:** 6Ckine, beta chemokine exodus-2, chemokine (C-C motif) ligand 21, CKb9, ECL, Efficient Chemoattractant for Lymphocytes, exodus-2, MGC34555, SCYA21, secondary lymphoid tissue chemokine, SLC, small inducible cytokine A21, TCA4, CCL21

**Official Symbol:** CCL21

**Accession Number(s):** NP\_002980.1

**Human GeneID(s):** [6366](#)

**Important Comments:** This antibody may cross-react with mouse CCL21 (GeneID: 18829) and rat CCL21 (GeneID: 298006).

### Immunogen

Peptide with sequence QGCRKDRGASKTG, from the internal region of the protein sequence according to NP\_002980.1.

Please note the [peptide](#) is available for sale.

### Purification and Storage

Purified from goat serum by ammonium sulphate precipitation followed by antigen affinity chromatography using the immunizing peptide.

Supplied at 0.5 mg/ml in Tris saline, 0.02% sodium azide, pH7.3 with 0.5% bovine serum albumin.

Aliquot and store at -20°C. Minimize freezing and thawing.

### Applications Tested

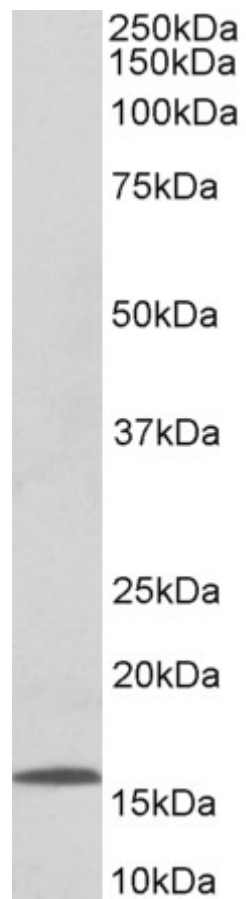
**Peptide ELISA:** antibody detection limit dilution 1:1000.

**Western blot:** Approx 16kDa band observed in Human Lymph Node lysates (calculated MW of 14.6kDa according to NP\_002980.1). Recommended concentration: 0.03-0.1µg/ml.

### Species Reactivity

**Tested:** Human

**Expected from sequence similarity:** Human



EB10008 (0.1µg/ml) staining of Human Lymph Node lysate (35µg protein in RIPA buffer). Primary incubation was 1 hour. Detected by chemiluminescence.