



UK Office

Everest Biotech Ltd

Cherwell Innovation Centre
77 Heyford Park
Upper Heyford
Oxfordshire
OX25 5HD
UK

Enquiries:

info@everestbiotech.com

Sales:

sales@everestbiotech.com

Tech support:

support@everestbiotech.com

Tel: +44 (0)1869 238326

Fax: +44 (0)1869 238327

US Office

Everest Biotech c/o Abcore

405 Maple Street, Suite A106
Ramona,
CA 92065
USA

Inquiries:

info@everestbiotech.com

Sales:

usasales@everestbiotech.com

Tech support:

support@everestbiotech.com

Tel: 888-320-4628 (toll-free)

Fax: 888-841-9041

www.everestbiotech.com

**Research Use Only. Not for
diagnostic or therapeutic use.**

EB07499 - Goat Anti-CCM2 Antibody

Size: 100µg specific antibody in 200µl



Target Protein

Principal Names: CCM2, cerebral cavernous malformation 2, C7orf22, MGC4067, MGC4607, MGC74868, PP10187

Official Symbol: CCM2

Accession Number(s): NP_001025006.1; NP_113631.1; NP_001161407.1; NP_001350387.1

Human GeneID(s): [83605](#)

Non-Human GeneID(s): 216527 (mouse)

Immunogen

Peptide with sequence C-KGEKSRDKKAHEK, from the internal region of the protein sequence according to NP_001025006.1; NP_113631.1; NP_001161407.1; NP_001350387.1.

Please note the [peptide](#) is available for sale.

Purification and Storage

Purified from goat serum by ammonium sulphate precipitation followed by antigen affinity chromatography using the immunizing peptide.

Supplied at 0.5 mg/ml in Tris saline, 0.02% sodium azide, pH7.3 with 0.5% bovine serum albumin.

Aliquot and store at -20°C. Minimize freezing and thawing.

Applications Tested

Peptide ELISA: antibody detection limit dilution 1:128000.

Western blot: Approx 45-48kDa band observed in Human Heart lysates and approx.48kDa in Human Cerebral Cortex lysates and in lysates of cell line KNRK (calculated MW of 48.8kDa according to Human NP_113631.1 and 49.8kDa according to Rat NP_001119747.1). Recommended concentration: 0.3-2µg/ml. Primary incubation 1 hour at room temperature.

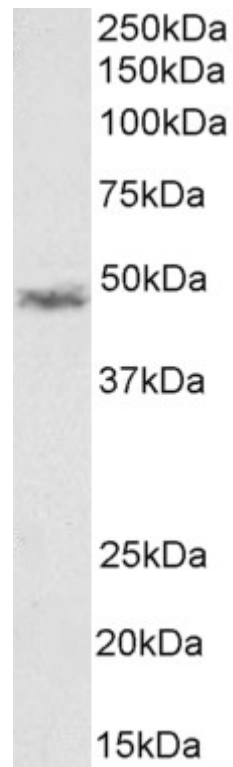
Immunofluorescence: Strong expression of the protein seen in the cytoplasm of U2OS cells. Recommended concentration: 10µg/ml.

Flow Cytometry: Flow cytometric analysis of KNRK cells. Recommended concentration: 10ug/ml.

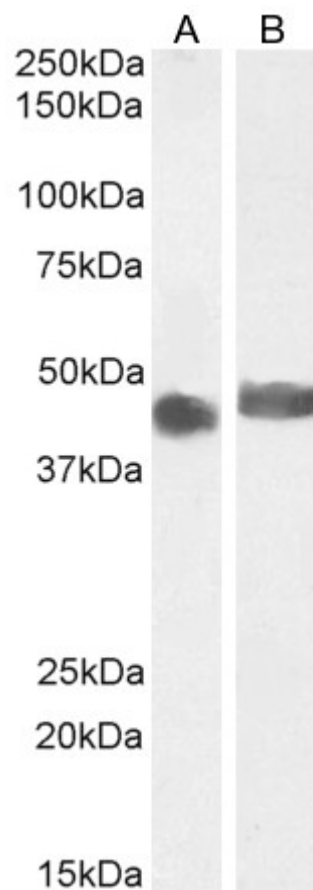
Species Reactivity

Tested: Human, Rat

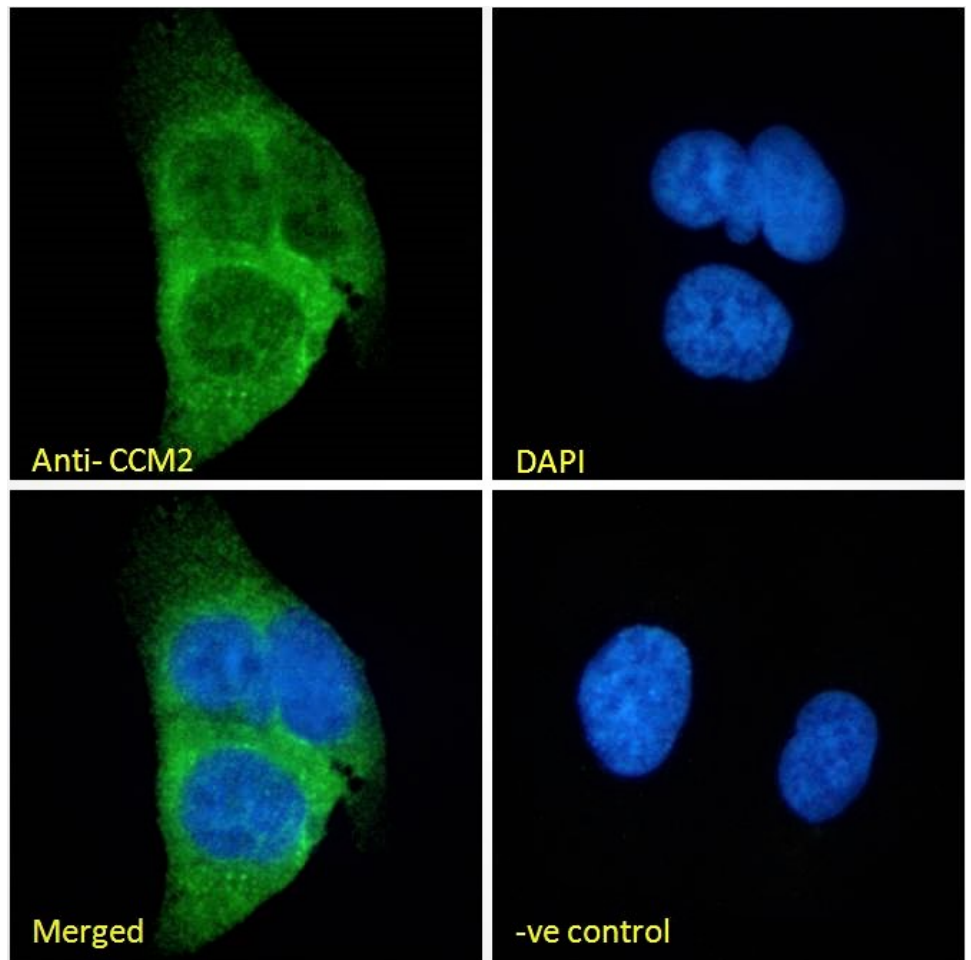
Expected from sequence similarity: Human, Mouse, Rat, Dog, Cow



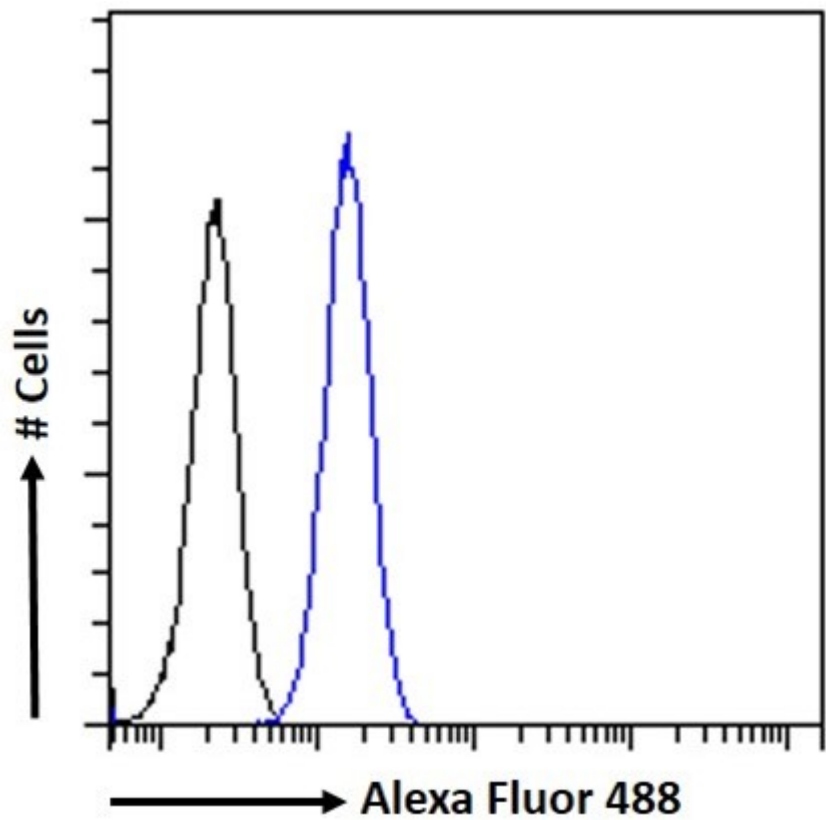
EB07499 (1 μ g/ml) staining of Rat KNRK cell lysate (35 μ g protein in RIPA buffer). Detected by chemiluminescence.



EB07499 (0.5 μ g/ml) staining of Human Heart (A) and (2 μ g/ml) Cerebral Cortex (B) lysate (35 μ g protein in RIPA buffer). Detected by chemiluminescence.



EB07499 Immunofluorescence analysis of paraformaldehyde fixed U2OS cells, permeabilized with 0.15% Triton. Primary incubation 1hr (10ug/ml) followed by Alexa Fluor 488 secondary antibody (2ug/ml), showing cytoplasmic staining. The nuclear stain is DAPI (blue). Negative control: Unimmunized goat IgG (10ug/ml) followed by Alexa Fluor 488 secondary antibody (2ug/ml).



EB07499 Flow cytometric analysis of paraformaldehyde fixed KNRK cells (blue line), permeabilized with 0.5% Triton. Primary incubation 1hr (10ug/ml) followed by Alexa Fluor 488 secondary antibody (1ug/ml). IgG control: Unimmunized goat IgG (black line) followed by Alexa Fluor 488 secondary antibody.