

## UK Office

### Everest Biotech Ltd

Cherwell Innovation Centre  
77 Heyford Park  
Upper Heyford  
Oxfordshire  
OX25 5HD  
UK

Enquiries:

[info@everestbiotech.com](mailto:info@everestbiotech.com)

Sales:

[sales@everestbiotech.com](mailto:sales@everestbiotech.com)

Tech support:

[support@everestbiotech.com](mailto:support@everestbiotech.com)

Tel: +44 (0)1869 238326

[www.everestbiotech.com](http://www.everestbiotech.com)

**Research Use Only. Not for  
diagnostic or therapeutic use.**

## EB11040 - Goat Anti-CCP5 (mouse) Antibody

Size: 100µg specific antibody in 200µl



### Target Protein

**Principal Names:** Agbl5, ATP/GTP binding protein-like 5, 4930455N08, 9430057O19Rik, CCP5, ATP/GTP-binding protein-like 5, OTTMUSP00000025344, OTTMUSP00000025346, OTTMUSP00000025347, OTTMUSP00000025350, OTTMUSP00000025351, carboxypeptidase 5, cytosolic, 4930455N08, 9430057O19Rik, ATP/GTP binding protein-like 5, ATP/GTP-binding protein-like 5, carboxypeptidase 5, cytosolic, CCP5, cytosolic carboxypeptidase-like protein 5, OTTMUSP00000025344, OTTMUSP00000025346, OTTMUSP00000025347, OTTMUSP00000025348, OTTMUSP00000025350, OTTMUSP00000025351, Agbl5

**Official Symbol:** Agbl5

**Accession Number(s):** NP\_001041657.1

**Non-Human GeneID(s):** 231093 (mouse)

**Important Comments:** This antibody is expected to recognize reported isoform 3 (NP\_001041657.1) only.

### Immunogen

Peptide with sequence CFSKPEEAGSHVE, from the internal region of the protein sequence according to NP\_001041657.1.

Please note the [peptide](#) is available for sale.

### Purification and Storage

Purified from goat serum by ammonium sulphate precipitation followed by antigen affinity chromatography using the immunizing peptide.

Supplied at 0.5 mg/ml in Tris saline, 0.02% sodium azide, pH7.3 with 0.5% bovine serum albumin.

Aliquot and store at -20°C. Minimize freezing and thawing.

### Applications Tested

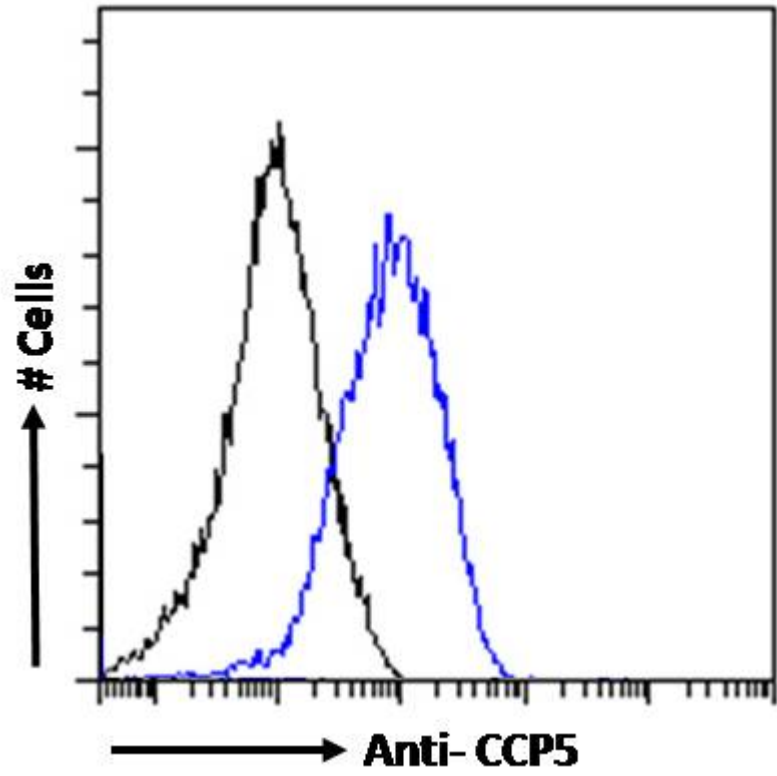
**Peptide ELISA:** antibody detection limit dilution 1:16000.

**Flow Cytometry:** Flow cytometric analysis of NIH3T3 cells. Recommended concentration: 10ug/ml.

### Species Reactivity

**Tested:** Mouse

**Expected from sequence similarity:** Mouse



EB11040 Flow cytometric analysis of paraformaldehyde fixed NIH3T3 cells (blue line), permeabilized with 0.5% Triton. Primary incubation overnight (10ug/ml) followed by Alexa Fluor 488 secondary antibody (1ug/ml). IgG control: Unimmunized goat IgG (black line) followed by Alexa Fluor 488 secondary antibody.