



## UK Office

### Everest Biotech Ltd

Cherwell Innovation Centre  
77 Heyford Park  
Upper Heyford  
Oxfordshire  
OX25 5HD  
UK

Enquiries:

[info@everestbiotech.com](mailto:info@everestbiotech.com)

Sales:

[sales@everestbiotech.com](mailto:sales@everestbiotech.com)

Tech support:

[support@everestbiotech.com](mailto:support@everestbiotech.com)

Tel: +44 (0)1869 238326

[www.everestbiotech.com](http://www.everestbiotech.com)

**Research Use Only. Not for  
diagnostic or therapeutic use.**

## EB09493 - Goat Anti-CD11A / integrin alpha L Antibody

Size: 100µg specific antibody in 200µl



### Target Protein

**Principal Names:** ITGAL, integrin, alpha L (antigen CD11A (p180), lymphocyte function-associated antigen 1, alpha polypeptide), CD11A, LFA-1, LFA1A, LFA-1 alpha, antigen CD11A (p180), lymphocyte function-associated antigen 1, alpha polypeptide, integrin alpha L, integrin gene promoter, lymphocyte function-associated antigen 1

**Official Symbol:** ITGAL

**Accession Number(s):** NP\_002200.2; NP\_001107852.1

**Human GeneID(s):** [3683](#)

**Important Comments:** This antibody is expected to recognize both reported isoforms (NP\_002200.2; NP\_001107852.1).

### Immunogen

Peptide with sequence C-YQVRIQPSIHDHN, from the internal region of the protein sequence according to NP\_002200.2; NP\_001107852.1.

Please note the [peptide](#) is available for sale.

### Purification and Storage

Purified from goat serum by ammonium sulphate precipitation followed by antigen affinity chromatography using the immunizing peptide.

Supplied at 0.5 mg/ml in Tris saline, 0.02% sodium azide, pH7.3 with 0.5% bovine serum albumin.

Aliquot and store at -20°C. Minimize freezing and thawing.

### Applications Tested

**Peptide ELISA:** antibody detection limit dilution 1:16000.

**Western blot:** Approx. 200kDa band observed in lysates of cell line THP-1 (calculated MW of 129kDa according to NP\_002200.2). This molecular weight is observed by other sources. Recommended concentration: 1-3µg/ml. Primary incubation 1 hour at room temperature.

**Positive Control:** A batch specific positive control lysate is available for this product. Please contact [Sales@everestbiotech.com](mailto:Sales@everestbiotech.com) for availability.

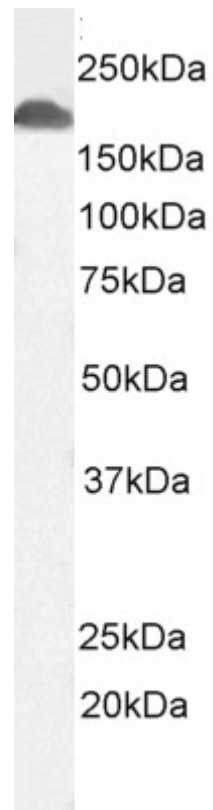
**IHC:** In paraffin embedded Human Lymph Node shows membrane staining in the paracortex. Recommended concentration: 2-4µg/ml. Paraffin embedded Human Spleen. Recommended concentration: 3.75µg/ml.

**Flow Cytometry:** Flow cytometric analysis of THP-1 cells. Recommended concentration: 10µg/ml.

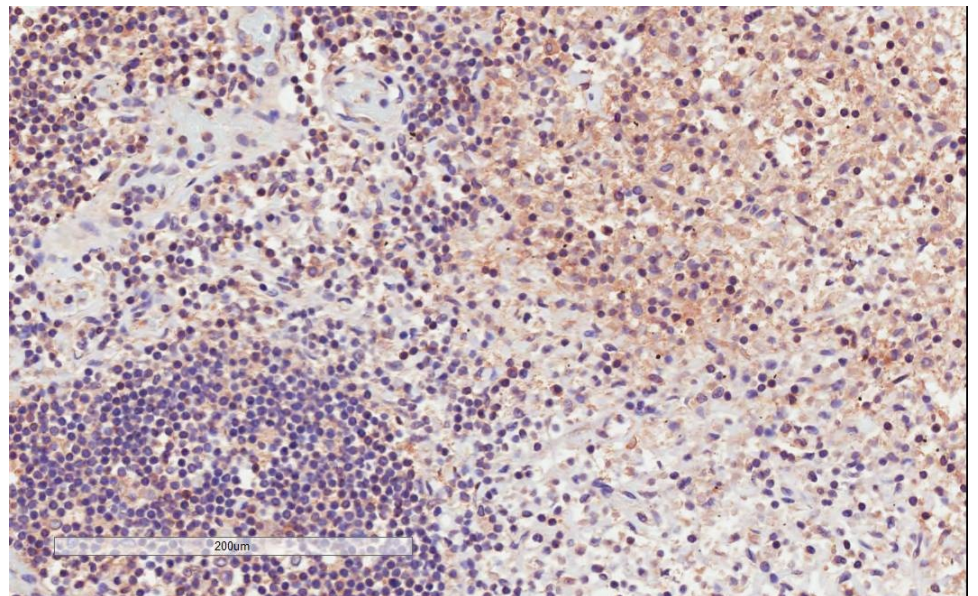
### Species Reactivity

**Tested:** Human

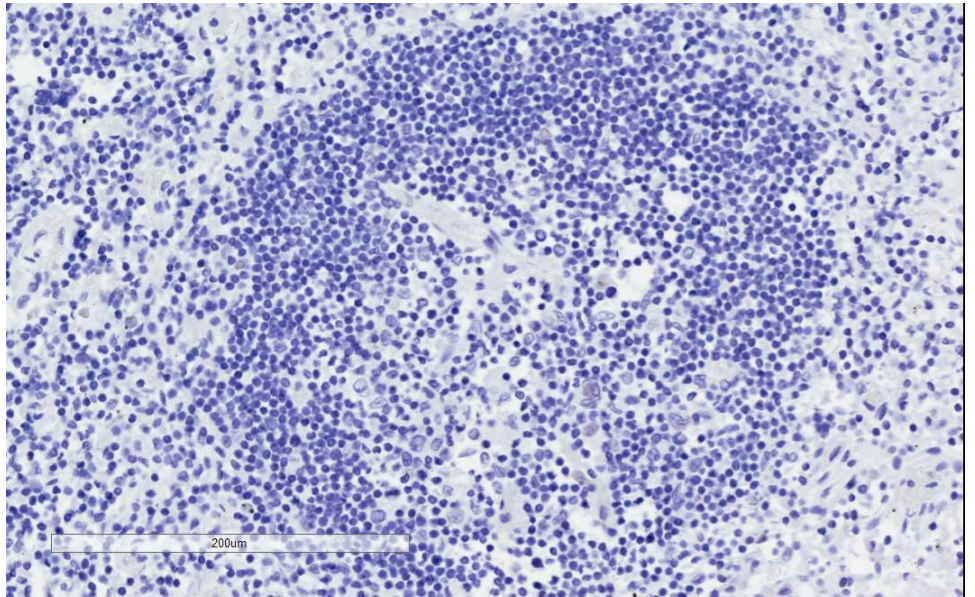
**Expected from sequence similarity:** Human



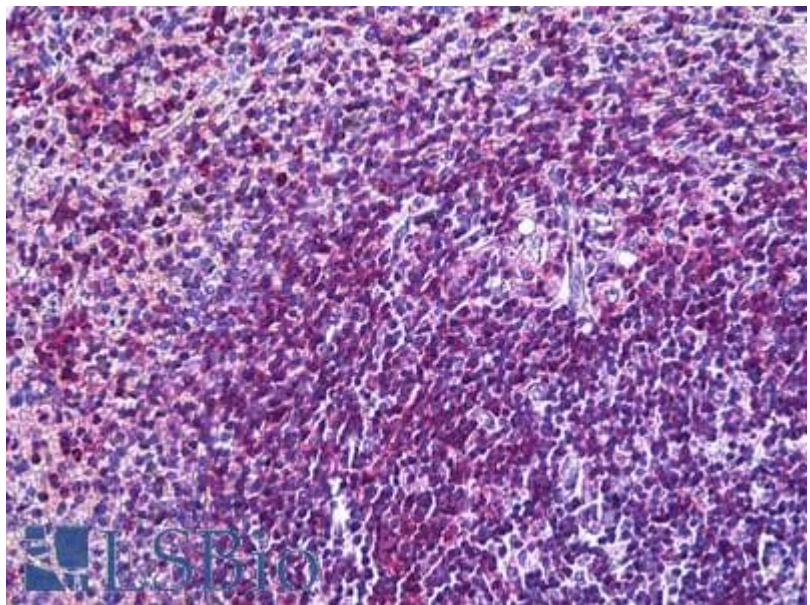
EB09493 (3 $\mu$ g/ml) staining of THP-1 cell lysate (35 $\mu$ g protein in RIPA buffer). Detected by chemiluminescence.



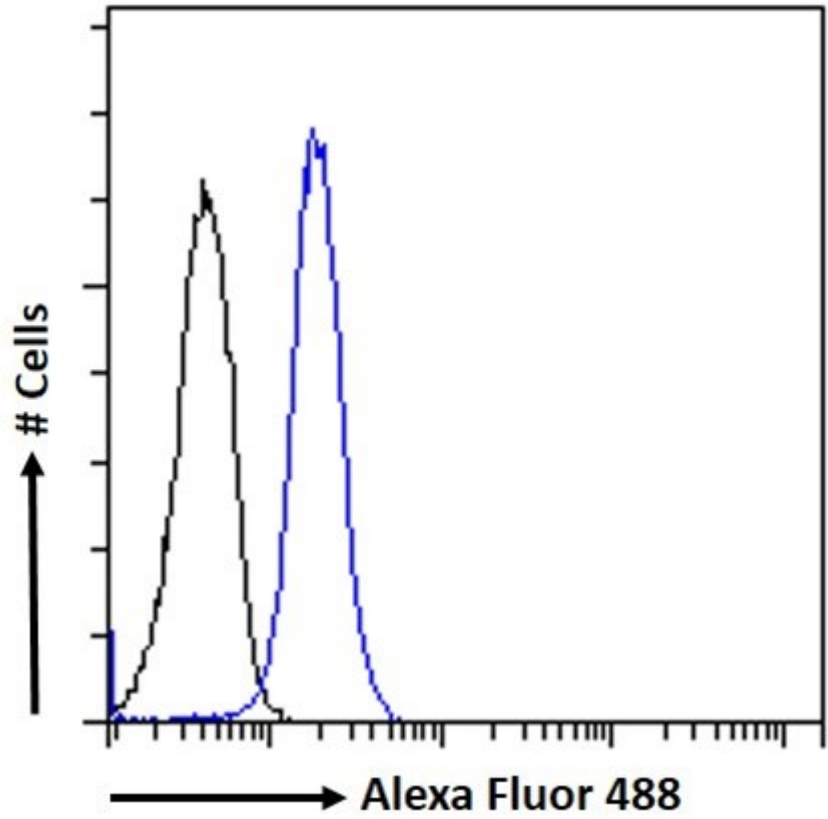
EB09493 (2 $\mu$ g/ml) staining of paraffin embedded Human Lymph Node. Microwaved antigen retrieval with citrate buffer pH 6, HRP-staining.



EB09493 Negative Control showing staining of paraffin embedded Human Lymph Node, with no primary antibody.



EB09493 (3.75µg/ml) staining of paraffin embedded Human Spleen. Steamed antigen retrieval with citrate buffer pH 6, AP-staining.



EB09493 Flow cytometric analysis of paraformaldehyde fixed THP1 cells (blue line), permeabilized with 0.5% Triton. Primary incubation 1hr (10ug/ml) followed by Alexa Fluor 488 secondary antibody (1ug/ml). IgG control: Unimmunized goat IgG (black line) followed by Alexa Fluor 488 secondary antibody.