



UK Office

Everest Biotech Ltd

Cherwell Innovation Centre
77 Heyford Park
Upper Heyford
Oxfordshire
OX25 5HD
UK

Enquiries:

info@everestbiotech.com

Sales:

sales@everestbiotech.com

Tech support:

support@everestbiotech.com

Tel: +44 (0)1869 238326

Fax: +44 (0)1869 238327

US Office

Everest Biotech c/o Abcore

405 Maple Street, Suite A106
Ramona,
CA 92065
USA

Inquiries:

info@everestbiotech.com

Sales:

usasales@everestbiotech.com

Tech support:

support@everestbiotech.com

Tel: 888-320-4628 (toll-free)

Fax: 888-841-9041

www.everestbiotech.com

**Research Use Only. Not for
diagnostic or therapeutic use.**

EB09493 - Goat Anti-CD11A / integrin alpha L Antibody

Size: 100µg specific antibody in 200µl



Target Protein

Principal Names: ITGAL, integrin, alpha L (antigen CD11A (p180), lymphocyte function-associated antigen 1, alpha polypeptide), CD11A, LFA-1, LFA1A, LFA-1 alpha, antigen CD11A (p180), lymphocyte function-associated antigen 1, alpha polypeptide, integrin alpha L, integrin gene promoter, lymphocyte function-associated antigen 1

Official Symbol: ITGAL

Accession Number(s): NP_002200.2; NP_001107852.1

Human GeneID(s): [3683](#)

Important Comments: This antibody is expected to recognize both reported isoforms (NP_002200.2; NP_001107852.1).

Immunogen

Peptide with sequence C-YQVRIQPSIHDHN, from the internal region of the protein sequence according to NP_002200.2; NP_001107852.1.

Please note the [peptide](#) is available for sale.

Purification and Storage

Purified from goat serum by ammonium sulphate precipitation followed by antigen affinity chromatography using the immunizing peptide.

Supplied at 0.5 mg/ml in Tris saline, 0.02% sodium azide, pH7.3 with 0.5% bovine serum albumin.

Aliquot and store at -20°C. Minimize freezing and thawing.

Applications Tested

Peptide ELISA: antibody detection limit dilution 1:16000.

Western blot: Approx. 200kDa band observed in lysates of cell line THP-1 (calculated MW of 129kDa according to NP_002200.2). This molecular weight is observed by other sources. Recommended concentration: 1-3µg/ml. Primary incubation 1 hour at room temperature.

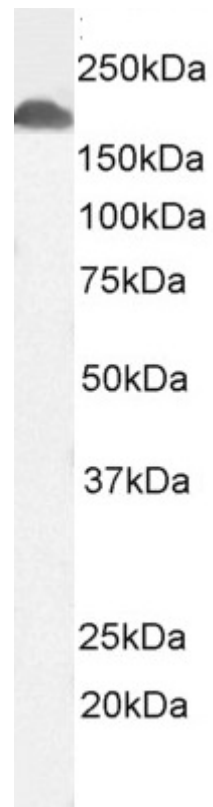
IHC: In paraffin embedded Human Lymph Node shows membrane staining in the paracortex. Recommended concentration: 2-4µg/ml. Paraffin embedded Human Spleen. Recommended concentration: 3.75µg/ml.

Flow Cytometry: Flow cytometric analysis of THP-1 cells. Recommended concentration: 10ug/ml.

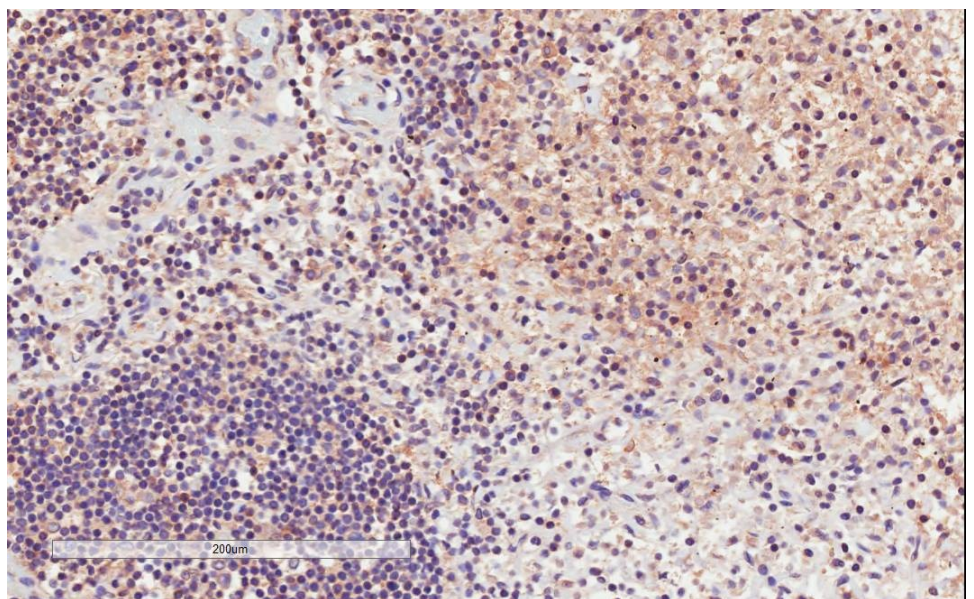
Species Reactivity

Tested: Human

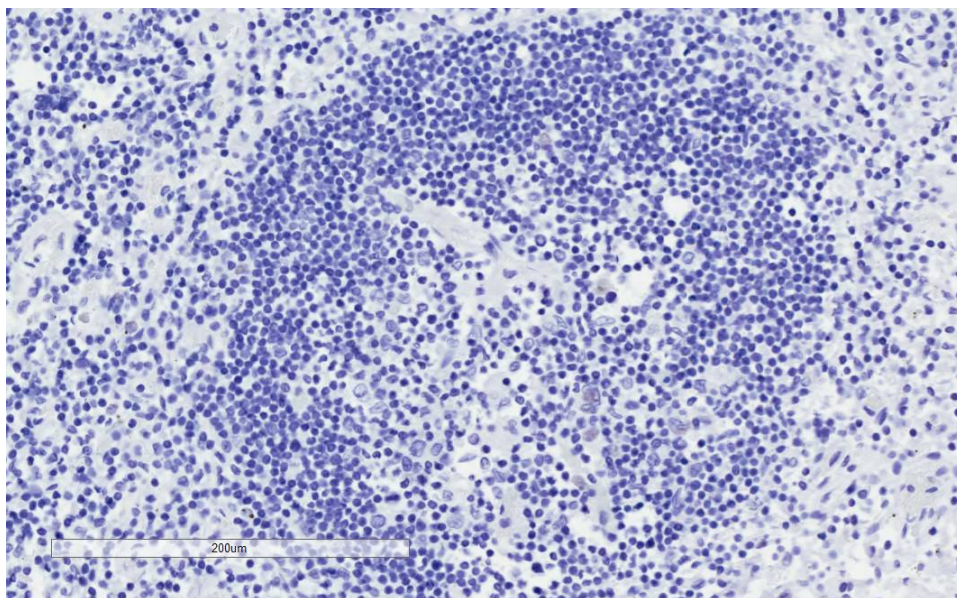
Expected from sequence similarity: Human



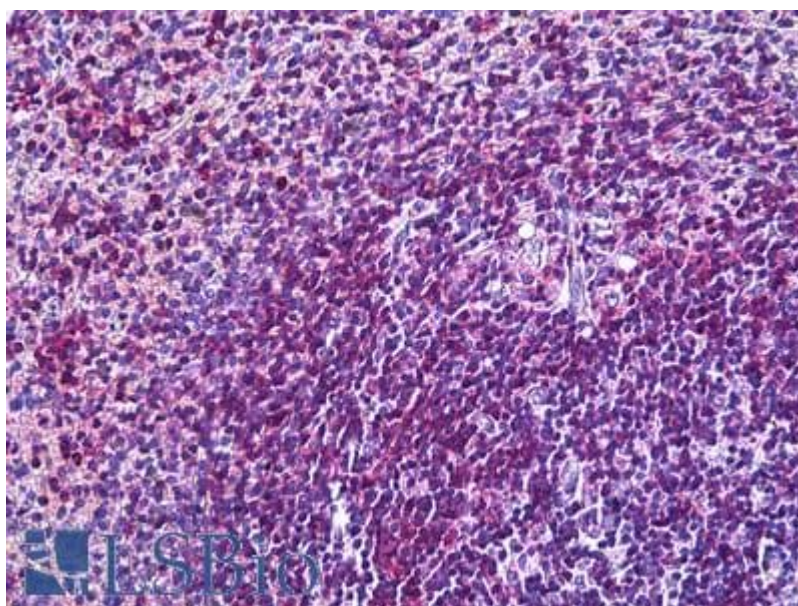
EB09493 (3ug/ml) staining of THP-1 cell lysate (35µg protein in RIPA buffer). Detected by chemiluminescence.



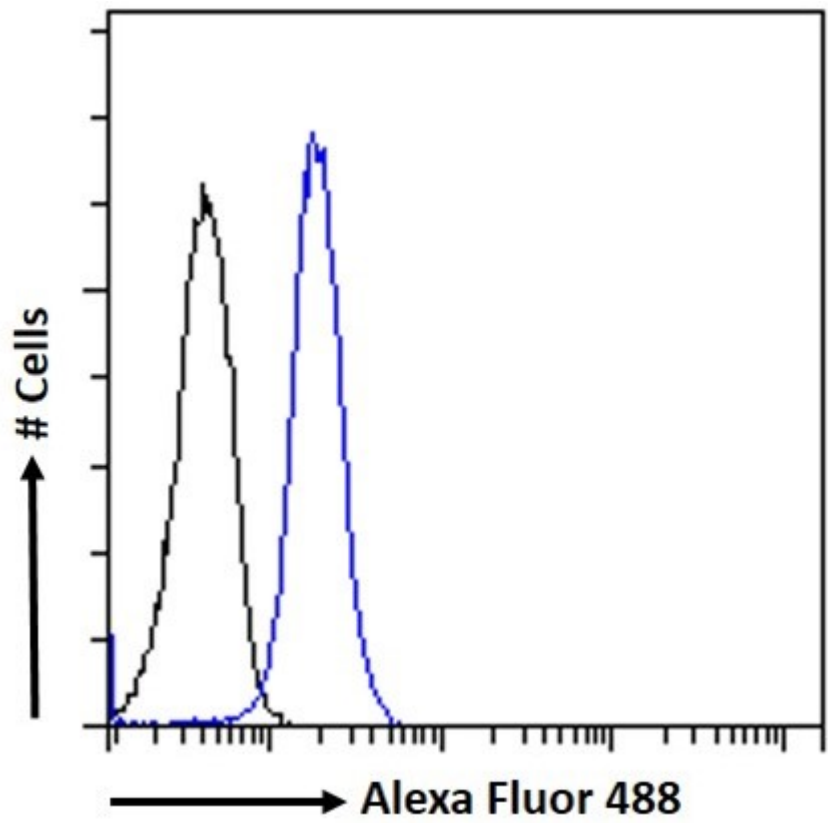
EB09493 (2µg/ml) staining of paraffin embedded Human Lymph Node. Microwaved antigen retrieval with citrate buffer pH 6, HRP-staining.



EB09493 Negative Control showing staining of paraffin embedded Human Lymph Node, with no primary antibody.



EB09493 (3.75μg/ml) staining of paraffin embedded Human Spleen. Steamed antigen retrieval with citrate buffer pH 6, AP-staining.



EB09493 Flow cytometric analysis of paraformaldehyde fixed THP1 cells (blue line), permeabilized with 0.5% Triton. Primary incubation 1hr (10ug/ml) followed by Alexa Fluor 488 secondary antibody (1ug/ml). IgG control: Unimmunized goat IgG (black line) followed by Alexa Fluor 488 secondary antibody.