



## UK Office

### Everest Biotech Ltd

Cherwell Innovation Centre  
77 Heyford Park  
Upper Heyford  
Oxfordshire  
OX25 5HD  
UK

Enquiries:

[info@everestbiotech.com](mailto:info@everestbiotech.com)

Sales:

[sales@everestbiotech.com](mailto:sales@everestbiotech.com)

Tech support:

[support@everestbiotech.com](mailto:support@everestbiotech.com)

Tel: +44 (0)1869 238326

Fax: +44 (0)1869 238327

## US Office

### Everest Biotech c/o Abcore

405 Maple Street, Suite A106  
Ramona,  
CA 92065  
USA

Inquiries:

[info@everestbiotech.com](mailto:info@everestbiotech.com)

Sales:

[usasales@everestbiotech.com](mailto:usasales@everestbiotech.com)

Tech support:

[support@everestbiotech.com](mailto:support@everestbiotech.com)

Tel: 888-320-4628 (toll-free)

Fax: 888-841-9041

[www.everestbiotech.com](http://www.everestbiotech.com)

**Research Use Only. Not for  
diagnostic or therapeutic use.**

## EB12534 - Goat Anti-CD13 / ANPEP (aa79-91) Antibody

Size: 100µg specific antibody in 200µl



### Target Protein

**Principal Names:** ANPEP, alanyl (membrane) aminopeptidase, APN, CD13, GP150, LAP1, P150, PEPN, AP-M, AP-N, alanyl aminopeptidase, aminopeptidase M, aminopeptidase N, hAPN, microsomal aminopeptidase, myeloid plasma membrane glycoprotein CD13

**Official Symbol:** ANPEP

**Accession Number(s):** NP\_001141.2

**Human GeneID(s):** [290](#)

### Immunogen

Peptide with sequence C-TLKPDSYRVTLRP, from the internal region (near N terminus) of the protein sequence according to NP\_001141.2.

Please note the [peptide](#) is available for sale.

### Purification and Storage

Purified from goat serum by ammonium sulphate precipitation followed by antigen affinity chromatography using the immunizing peptide.

Supplied at 0.5 mg/ml in Tris saline, 0.02% sodium azide, pH7.3 with 0.5% bovine serum albumin.

Aliquot and store at -20°C. Minimize freezing and thawing.

### Applications Tested

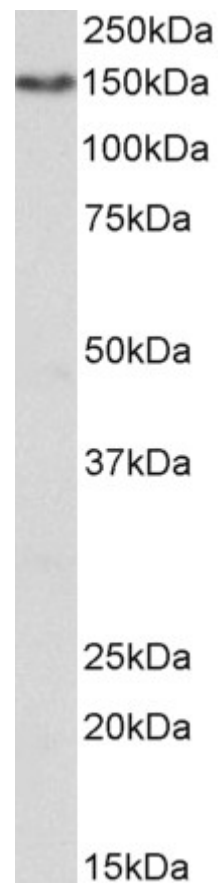
**Peptide ELISA:** antibody detection limit dilution 1:128000.

**Western blot:** Approx 150kDa band observed in Human Kidney lysates (calculated MW of 110kDa according to NP\_001141.2). The observed molecular weight corresponds to the glycosylated form. Recommended concentration: 1-3µg/ml.

### Species Reactivity

**Tested:** Human

**Expected from sequence similarity:** Human



EB12534 (1 $\mu$ g/ml) staining of Human Kidney lysate (35 $\mu$ g protein in RIPA buffer). Primary incubation was 1 hour.  
Detected by chemiluminescence.