



UK Office

Everest Biotech Ltd

Cherwell Innovation Centre
77 Heyford Park
Upper Heyford
Oxfordshire
OX25 5HD
UK

Enquiries:

info@everestbiotech.com

Sales:

sales@everestbiotech.com

Tech support:

support@everestbiotech.com

Tel: +44 (0)1869 238326

Fax: +44 (0)1869 238327

US Office

Everest Biotech c/o Abcore

405 Maple Street, Suite A106
Ramona,
CA 92065
USA

Inquiries:

info@everestbiotech.com

Sales:

usasales@everestbiotech.com

Tech support:

support@everestbiotech.com

Tel: 888-320-4628 (toll-free)

Fax: 888-841-9041

www.everestbiotech.com

**Research Use Only. Not for
diagnostic or therapeutic use.**

EB07103 - Goat Anti-CD14 Antibody

Size: 100µg specific antibody in 200µl



Target Protein

Principal Names: CD14, CD14 antigen, HGNC:1628

Official Symbol: CD14

Accession Number(s): NP_000582.1

Human GeneID(s): [929](#)

Immunogen

Peptide with sequence C-KRVDADADPRQYAD, from the internal region of the protein sequence according to NP_000582.1.

Please note the [peptide](#) is available for sale.

Purification and Storage

Purified from goat serum by ammonium sulphate precipitation followed by antigen affinity chromatography using the immunizing peptide.

Supplied at 0.5 mg/ml in Tris saline, 0.02% sodium azide, pH7.3 with 0.5% bovine serum albumin.

Aliquot and store at -20°C. Minimize freezing and thawing.

Applications Tested

Peptide ELISA: antibody detection limit dilution 1:128000.

Western blot: Approx 55kDa band observed in Human Lymph node and Tonsil lysates (calculated MW of 40.1kDa according to NP_000582.1). The observed molecular weight corresponds to the glycosylated form, and was successfully blocked by incubation with the immunizing peptide. Recommended concentration: 1-3µg/ml. Primary incubation 1 hour at room temperature.

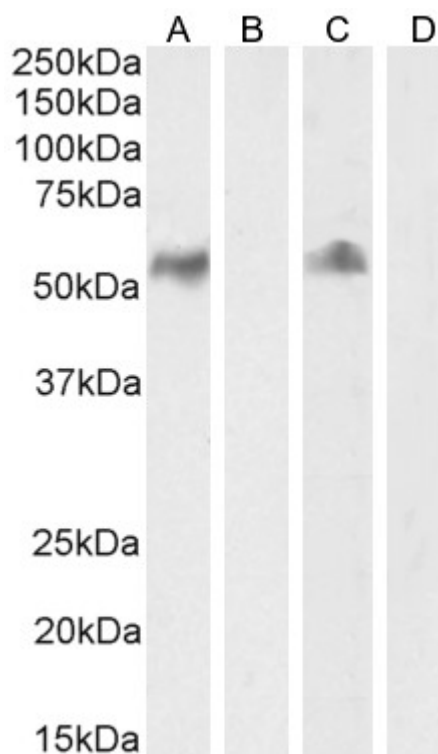
IHC: Paraffin embedded Human Tonsil. Recommended concentration: 6-8µg/ml. Weak positive staining of Non germinal center cells in Human Lymph Node was also observed.

Flow Cytometry: Flow cytometric analysis of A549 cells. Recommended concentration: 10ug/ml.

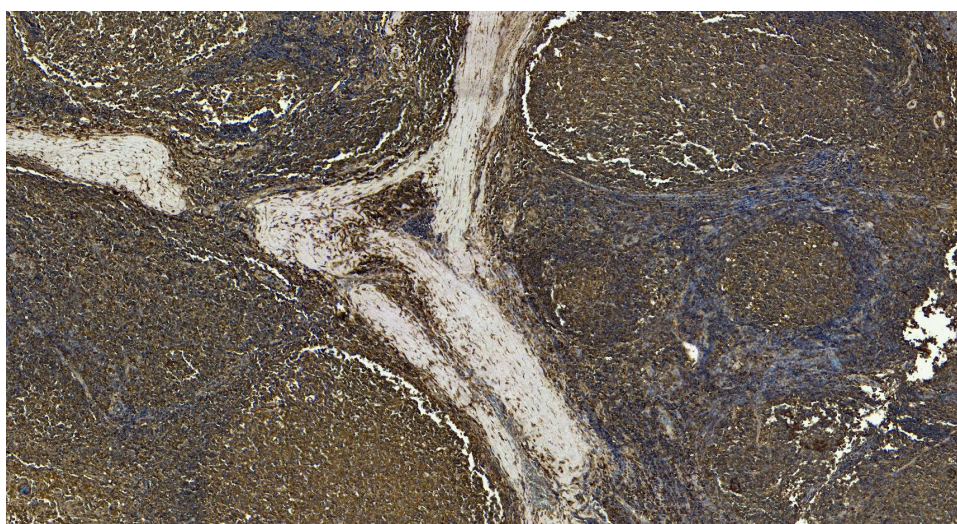
Species Reactivity

Tested: Human

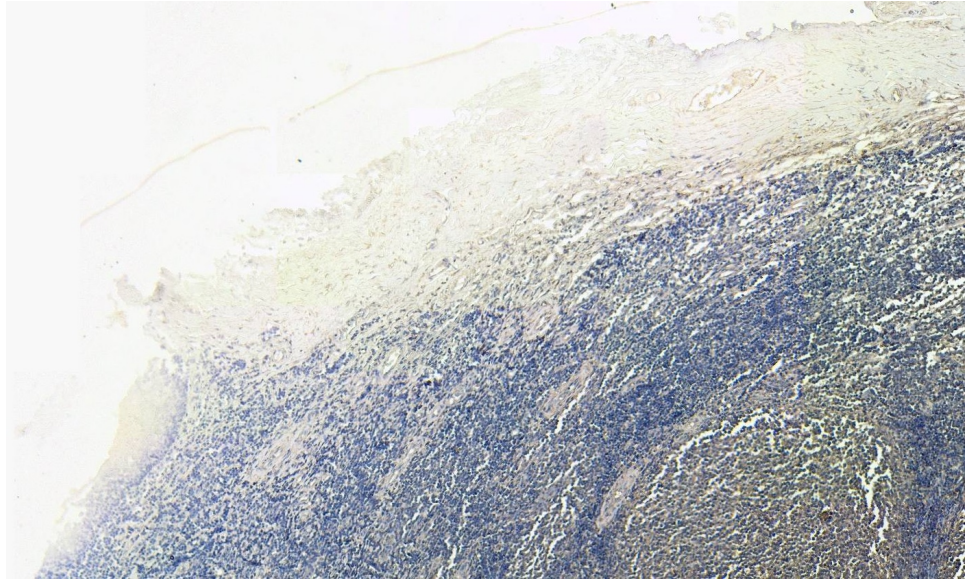
Expected from sequence similarity: Human



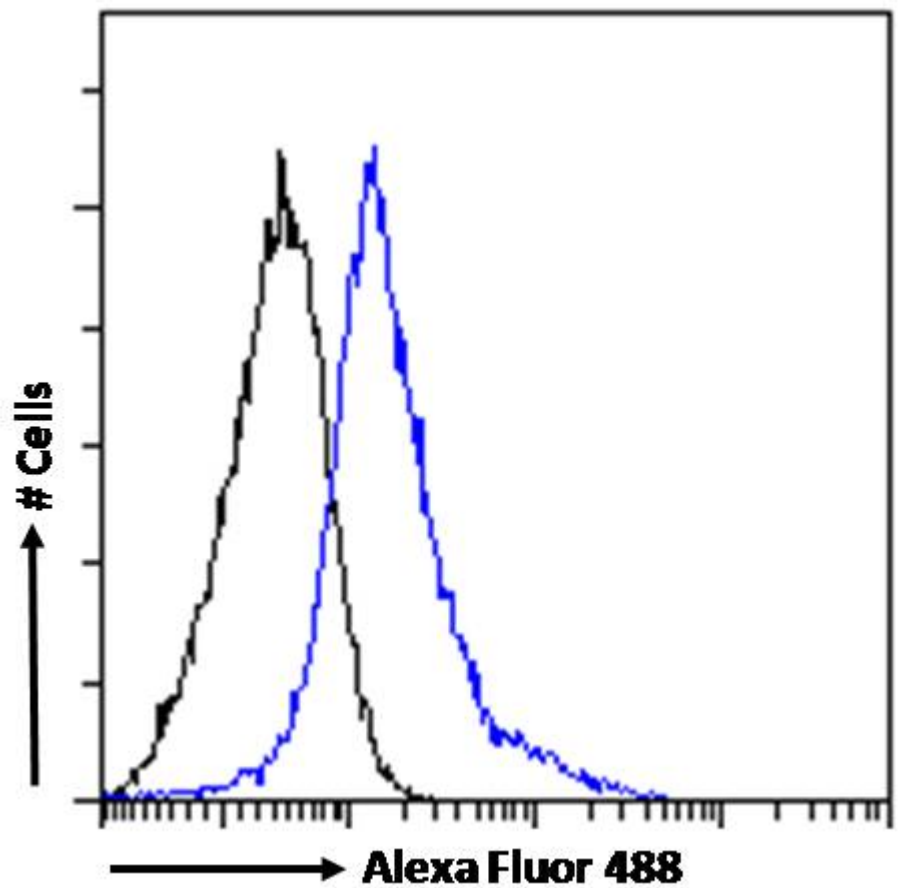
EB07103 (2 μ g/ml) staining of Human Lymph node (A) + peptide (B) and Tonsil (C) + peptide (D) lysate (35 μ g protein in RIPA buffer) Detected by chemiluminescence.



EB07103 (8 μ g/ml) staining of paraffin embedded Human Tonsil. Heat induced antigen retrieval with citrate buffer pH 6, HRP-staining.



EB07103 Negative Control showing staining of paraffin embedded Human Tonsil, with no primary antibody.



EB07103 Flow cytometric analysis of paraformaldehyde fixed A549 cells (blue line), permeabilized with 0.5% Triton. Primary incubation 1hr (10ug/ml) followed by Alexa Fluor 488 secondary antibody (1ug/ml). IgG control: Unimmunized goat IgG (black line) followed by Alexa Fluor 488 secondary antibody.