



Everest Biotech Ltd  
Cherwell Innovation Centre  
77 Heyford Park  
Upper Heyford  
Oxfordshire  
OX25 5HD, United Kingdom

[everestbiotech.com](http://everestbiotech.com)

[sales@everestbiotech.com](mailto:sales@everestbiotech.com)

[support@everestbiotech.com](mailto:support@everestbiotech.com)

Tel +44 1869 238326

Fax +44 1869 238327

**Research Use Only. Not for diagnostic or therapeutic use.**

Storage: For long-term storage keep aliquots at -20°C. (Store no longer than 12 months at 4°C). Minimize freezing and thawing.

## EB06621 - Goat Anti-CD274 / PD-L1 Antibody

Size: 100µg specific antibody in 200µl



### Target Protein

**Principal Names:** MGC142296, MGC142294, CD274 molecule, CD274, HGNC:17635, PDL1, programmed cell death 1 ligand 1, PDCD1L1, PDL1, B7H1, B7-H, PDCD1LG1, PD-L1, CD274 antigen

**Official Symbol:** CD274

**Accession Number(s):** NP\_054862.1

**Human GeneID(s):** [29126](#)

### Immunogen

Peptide with sequence CKKQSDTHLEET, from the C Terminus of the protein sequence according to NP\_054862.1.

Please note the [peptide](#) is available for sale.

### Purification and Storage

Purified from goat serum by ammonium sulphate precipitation followed by antigen affinity chromatography using the immunizing peptide.

Supplied at 0.5 mg/ml in Tris saline, 0.02% sodium azide, pH7.3 with 0.5% bovine serum albumin.

Aliquot and store at -20°C. Minimize freezing and thawing.

### Applications Tested

**Peptide ELISA:** antibody detection limit dilution 1:8000.

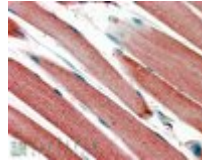
**Western blot:** Approx 35kDa band observed in Human Heart lysates (calculated MW of 33.3kDa according to NP\_054862.1). Recommended concentration: 0.3-1.0 µg/ml.

**IHC:** In paraffin embedded Human Skeletal Muscle shows staining of the striated muscular fibres. Recommended concentration, 4-6µg/ml. Data obtained with a previous batch.

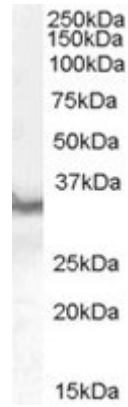
### Species Reactivity

**Tested:** Human

**Expected from sequence similarity:** Human



EB06621 (4 $\mu$ g/ml) staining of paraffin embedded Human Skeletal Muscle. Steamed antigen retrieval with citrate buffer pH 6, AP-staining.



EB06621 staining (0.3 $\mu$ g/ml) of Human Heart lysate (RIPA buffer, 30 $\mu$ g total protein per lane). Primary incubated for 1 hour. Detected by western blot using chemiluminescence.