

UK Office

Everest Biotech Ltd

Cherwell Innovation Centre
77 Heyford Park
Upper Heyford
Oxfordshire
OX25 5HD
UK

Enquiries:

info@everestbiotech.com

Sales:

sales@everestbiotech.com

Tech support:

support@everestbiotech.com

Tel: +44 (0)1869 238326

www.everestbiotech.com

**Research Use Only. Not for
diagnostic or therapeutic use.**

EB10741 - Goat Anti-Cd28 (mouse) Antibody

Size: 100µg specific antibody in 200µl



Target Protein

Principal Names: Cd28, CD28 antigen, CH29-189K17.3, OTTMUSP00000002157, T-cell-specific surface glycoprotein CD28

Official Symbol: Cd28

Accession Number(s): NP_031668.3

Non-Human GeneID(s): 12487 (mouse)

Important Comments: The immunizing peptide represents a part of the extracellular domain.

Immunogen

Peptide with sequence KEKHLCHTQSSPK, from the internal region of the protein sequence according to NP_031668.3.

Please note the [peptide](#) is available for sale.

Purification and Storage

Purified from goat serum by ammonium sulphate precipitation followed by antigen affinity chromatography using the immunizing peptide.

Supplied at 0.5 mg/ml in Tris saline, 0.02% sodium azide, pH7.3 with 0.5% bovine serum albumin.

Aliquot and store at -20°C. Minimize freezing and thawing.

Applications Tested

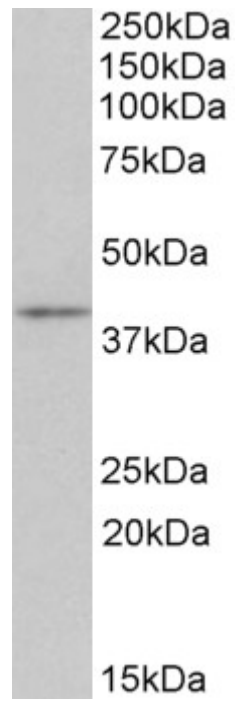
Peptide ELISA: antibody detection limit dilution 1:16000.

Western blot: Approx 40kDa band observed in Mouse Thymus lysates (calculated MW of 25.2kDa according to NP_031668.3). The observed molecular weight corresponds to the glycosylated form. Recommended concentration: 0.3-1µg/ml.

Species Reactivity

Tested: Mouse

Expected from sequence similarity: Mouse



EB10741 (0.3 μ g/ml) staining of Mouse Thymus lysate (35 μ g protein in RIPA buffer). Primary incubation was 1 hour. Detected by chemiluminescence.