



Everest Biotech Ltd
Cherwell Innovation Centre
77 Heyford Park
Upper Heyford
Oxfordshire
OX25 5HD, United Kingdom

everestbiotech.com

sales@everestbiotech.com

support@everestbiotech.com

Tel +44 1869 238326

Fax +44 1869 238327

Research Use Only. Not for diagnostic or therapeutic use.

Storage: For long-term storage keep aliquots at -20°C. (Store no longer than 12 months at 4°C). Minimize freezing and thawing.

EB06695 - Goat Anti-CD32 / FCGR2B Antibody

Size: 100µg specific antibody in 200µl



Target Protein

Principal Names: Fc fragment of IgG, low affinity IIb, receptor, CD32B, Fc fragment of IgG, low affinity IIb, receptor (CD32), Fc fragment of IgG, low affinity II, receptor for (CD32), Fc gamma RIIB, Fc fragment of IgG, low affinity IIb, receptor for (CD32), IGFR2, FCGR2, FCG2, CD32, FCGR2B

Official Symbol: FCGR2B

Accession Number(s): NP_003992.3; NP_001002273.1; NP_001002274.1; NP_001002275.1; NP_001177757.1

Human GeneID(s): [2213](#)

Important Comments: This antibody is expected to recognise all reported isoforms (NP_001002273.1; NP_001002274.1; NP_001002275.1; NP_003992.3; NP_001177757.1).

Immunogen

Peptide with sequence C-PDALEEPDDQNRI, from the C Terminus of the protein sequence according to NP_003992.3; NP_001002273.1; NP_001002274.1; NP_001002275.1; NP_001177757.1.

Please note the [peptide](#) is available for sale.

Purification and Storage

Purified from goat serum by ammonium sulphate precipitation followed by antigen affinity chromatography using the immunizing peptide.

Supplied at 0.5 mg/ml in Tris saline, 0.02% sodium azide, pH7.3 with 0.5% bovine serum albumin.

Aliquot and store at -20°C. Minimize freezing and thawing.

Applications Tested

Peptide ELISA: antibody detection limit dilution 1:16000.

Western blot: Approx 34kDa band observed in Human myeloid erythroblast cell line K562 and Human monocytic cell line U937 lysates (calculated MW of 34.0kDa according to NP_003992.3;). In transfected HEK293 transiently expressing CD32 a band of approx. 40kDa (glycoprotein) is observed. This band is not observed in the non-transfected HEK293. Recommended concentration: 0.3-1µg/ml.

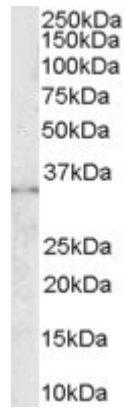
IHC: In paraffin embedded Human Liver shows membranous staining in endothelial cells between the hepatocytes. Similar results were obtained in Human Placenta.

Recommended concentration, 3-6µg/ml.

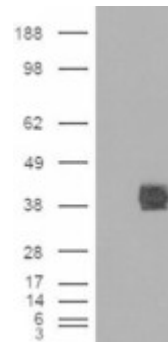
Species Reactivity

Tested: Human

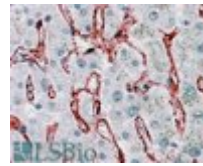
Expected from sequence similarity: Human



EB06695 (0.3 μ g/ml) staining of K562 lysate (35 μ g protein in RIPA buffer). Primary incubation was 1 hour. Detected by chemiluminescence.



HEK293 overexpressing CD32 (RC211982) and probed with EB06695 (mock transfection in first lane), tested by Origene.



EB06695 (3.8 μ g/ml) staining of paraffin embedded Human Liver. Steamed antigen retrieval with citrate buffer pH 6, AP-staining.