

## UK Office

### Everest Biotech Ltd

Cherwell Innovation Centre  
77 Heyford Park  
Upper Heyford  
Oxfordshire  
OX25 5HD  
UK

Enquiries:

[info@everestbiotech.com](mailto:info@everestbiotech.com)

Sales:

[sales@everestbiotech.com](mailto:sales@everestbiotech.com)

Tech support:

[support@everestbiotech.com](mailto:support@everestbiotech.com)

Tel: +44 (0)1869 238326

[www.everestbiotech.com](http://www.everestbiotech.com)

**Research Use Only. Not for  
diagnostic or therapeutic use.**

## EB11699 - Goat Anti-CD40 (isoform 1) Antibody

Size: 100µg specific antibody in 200µl



### Target Protein

**Principal Names:** B cell surface antigen CD40, B cell-associated molecule, B-cell surface antigen CD40, Bp50, CD40, CD40 antigen (TNF receptor superfamily member 5), CD40 molecule, TNF receptor superfamily member 5, CD40 type II isoform, CD40L, CDW40, MGC9013, p50, TNFRSF5

**Official Symbol:** CD40

**Accession Number(s):** NP\_001241.1

**Human GeneID(s):** [958](#)

**Important Comments:** This antibody is expected to recognize isoform 1 (NP\_001241.1) only.

### Immunogen

Peptide with sequence C-PQEINFPDDLPGSN, from the internal region of the protein sequence according to NP\_001241.1.

Please note the [peptide](#) is available for sale.

### Purification and Storage

Purified from goat serum by ammonium sulphate precipitation followed by antigen affinity chromatography using the immunizing peptide.

Supplied at 0.5 mg/ml in Tris saline, 0.02% sodium azide, pH7.3 with 0.5% bovine serum albumin.

Aliquot and store at -20°C. Minimize freezing and thawing.

### Applications Tested

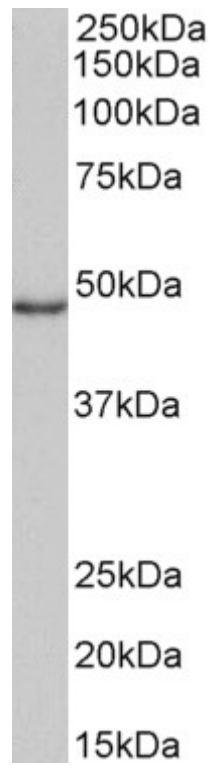
**Peptide ELISA:** antibody detection limit dilution 1:128000.

**Western blot:** Approx 48kDa band observed in lysates of cell line Daudi (calculated MW of 30.6kDa according to NP\_001241.1). The observed molecular weight corresponds to the glycosylated form. Recommended concentration: 1-3µg/ml.

### Species Reactivity

**Tested:** Human

**Expected from sequence similarity:** Human



EB11699 (1 $\mu$ g/ml) staining of Daudi lysate (35 $\mu$ g protein in RIPA buffer). Primary incubation was 1 hour.  
Detected by chemiluminescence.