

## UK Office

### Everest Biotech Ltd

Cherwell Innovation Centre  
77 Heyford Park  
Upper Heyford  
Oxfordshire  
OX25 5HD  
UK

Enquiries:

[info@everestbiotech.com](mailto:info@everestbiotech.com)

Sales:

[sales@everestbiotech.com](mailto:sales@everestbiotech.com)

Tech support:

[support@everestbiotech.com](mailto:support@everestbiotech.com)

Tel: +44 (0)1869 238326

[www.everestbiotech.com](http://www.everestbiotech.com)

**Research Use Only. Not for  
diagnostic or therapeutic use.**

## EB12255 - Goat Anti-CD44 Antibody

Size: 100µg specific antibody in 200µl



### Target Protein

**Principal Names:** CD44, CD44 molecule (Indian blood group), CDW44, CSPG8, ECMR-III, HCELL, HUTCH-I, IN, LHR, MC56, MDU2, MDU3, MIC4, Pgp1, CD44 antigen, GP90 lymphocyte homing/adhesion receptor, Hermes antigen, cell surface glycoprotein CD44, chondroitin sulfate proteoglycan 8, epican, extracellular matrix receptor III, hematopoietic cell E- and L-selectin ligand, heparan sulfate proteoglycan, homing function and Indian blood group system, hyaluronate receptor, phagocytic glycoprotein 1

**Official Symbol:** CD44

**Accession Number(s):** NP\_000601.3; NP\_001001389.1; NP\_001001390.1; NP\_001001391.1; NP\_001001392.1; NP\_001189484.1; NP\_001189485.1; NP\_001189486.1

**Human GenelD(s):** [960](#)

**Important Comments:** This antibody is expected to recognize reported isoforms 1, 2, 3, 4, 6, 7, 8 (NP\_000601.3; NP\_001001389.1; NP\_001001390.1; NP\_001001391.1; NP\_001189484.1; NP\_001189485.1; NP\_001189486.1).

### Immunogen

Peptide with sequence C-NRDGTRYVQKGEYRT, from the internal region of the protein sequence according to NP\_000601.3; NP\_001001389.1; NP\_001001390.1; NP\_001001391.1; NP\_001001392.1; NP\_001189484.1; NP\_001189485.1; NP\_001189486.1.

Please note the [peptide](#) is available for sale.

### Purification and Storage

Purified from goat serum by ammonium sulphate precipitation followed by antigen affinity chromatography using the immunizing peptide.

Supplied at 0.5 mg/ml in Tris saline, 0.02% sodium azide, pH7.3 with 0.5% bovine serum albumin.

Aliquot and store at -20°C. Minimize freezing and thawing.

### Applications Tested

**Peptide ELISA:** antibody detection limit dilution 1:128000.

**Western blot:** Approx 75-82kDa band observed in lysates of cell line U-2 OS (calculated MW of 81.5kDa according to NP\_000601.3 and 76.6 according to NP\_001001389.1).

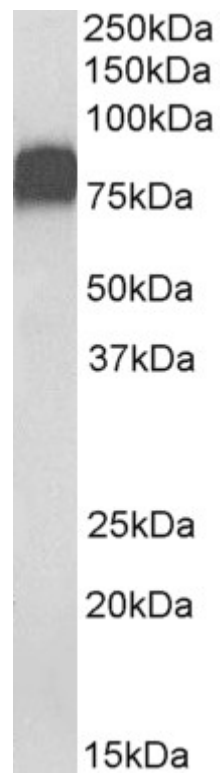
Recommended concentration: 0.01-0.03µg/ml.

**IHC:** Paraffin embedded Human Spleen. Recommended concentration: 5µg/ml.

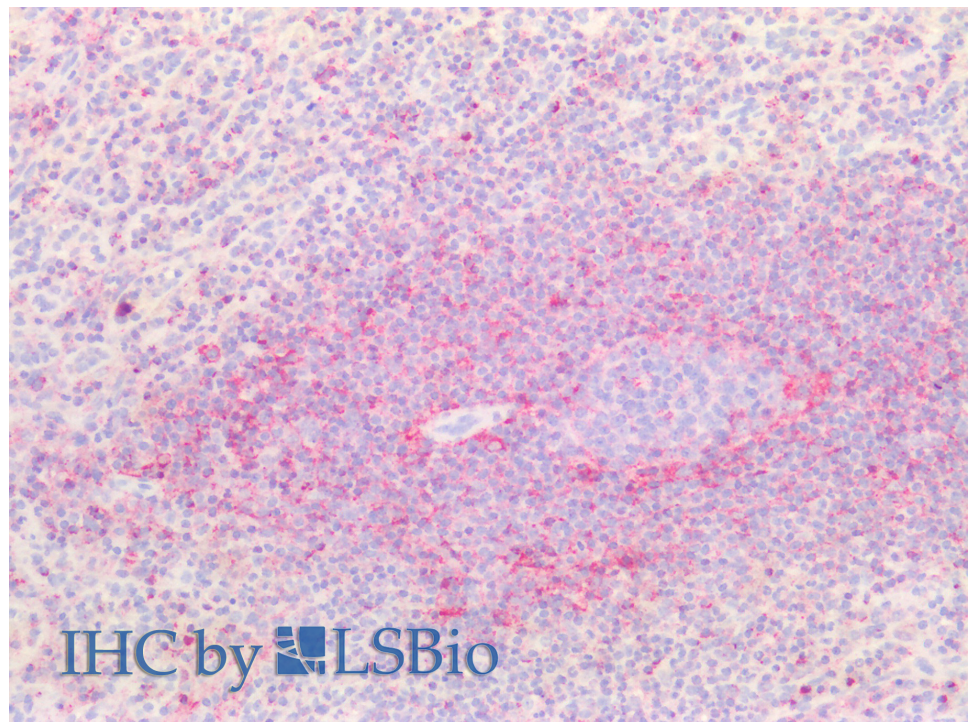
### Species Reactivity

**Tested:** Human

**Expected from sequence similarity:** Human



EB12255 (0.03µg/ml) staining of U-2 OS lysate (35µg protein in RIPA buffer). Primary incubation was 1 hour. Detected by chemiluminescence.



EB12255 (5µg/ml) staining of paraffin embedded Human Spleen. Steamed antigen retrieval with citrate buffer pH 6, AP-staining.