



UK Office

Everest Biotech Ltd

Cherwell Innovation Centre
77 Heyford Park
Upper Heyford
Oxfordshire
OX25 5HD
UK

Enquiries:

info@everestbiotech.com

Sales:

sales@everestbiotech.com

Tech support:

support@everestbiotech.com

Tel: +44 (0)1869 238326

Fax: +44 (0)1869 238327

US Office

Everest Biotech c/o Abcore

405 Maple Street, Suite A106
Ramona,
CA 92065
USA

Inquiries:

info@everestbiotech.com

Sales:

usasales@everestbiotech.com

Tech support:

support@everestbiotech.com

Tel: 888-320-4628 (toll-free)

Fax: 888-841-9041

www.everestbiotech.com

**Research Use Only. Not for
diagnostic or therapeutic use.**

EB12501 - Goat Anti-CD47 Antibody

Size: 100µg specific antibody in 200µl



Target Protein

Principal Names: CD47, CD47 molecule, IAP, MER6, OA3, CD47 antigen (Rh-related antigen, integrin-associated signal transducer), CD47 glycoprotein, Rh-related antigen, antigen identified by monoclonal antibody 1D8, antigenic surface determinant protein OA3, integrin associ

Official Symbol: CD47

Accession Number(s): NP_001768.1; NP_942088.1; NP_001369235.1

Human GeneID(s): [961](#)

Important Comments: This antibody; is expected to recognize all reported isoforms (NP_001768.1; NP_942088.1; NP_001369235.1).

Immunogen

Peptide with sequence C-SNQKTIQPPRK, from the internal region (near C terminus) of the protein sequence according to NP_001768.1; NP_942088.1; NP_001369235.1.

Please note the [peptide](#) is available for sale.

Purification and Storage

Purified from goat serum by ammonium sulphate precipitation followed by antigen affinity chromatography using the immunizing peptide.

Supplied at 0.5 mg/ml in Tris saline, 0.02% sodium azide, pH7.3 with 0.5% bovine serum albumin.

Aliquot and store at -20°C. Minimize freezing and thawing.

Applications Tested

Peptide ELISA: antibody detection limit dilution 1:128000.

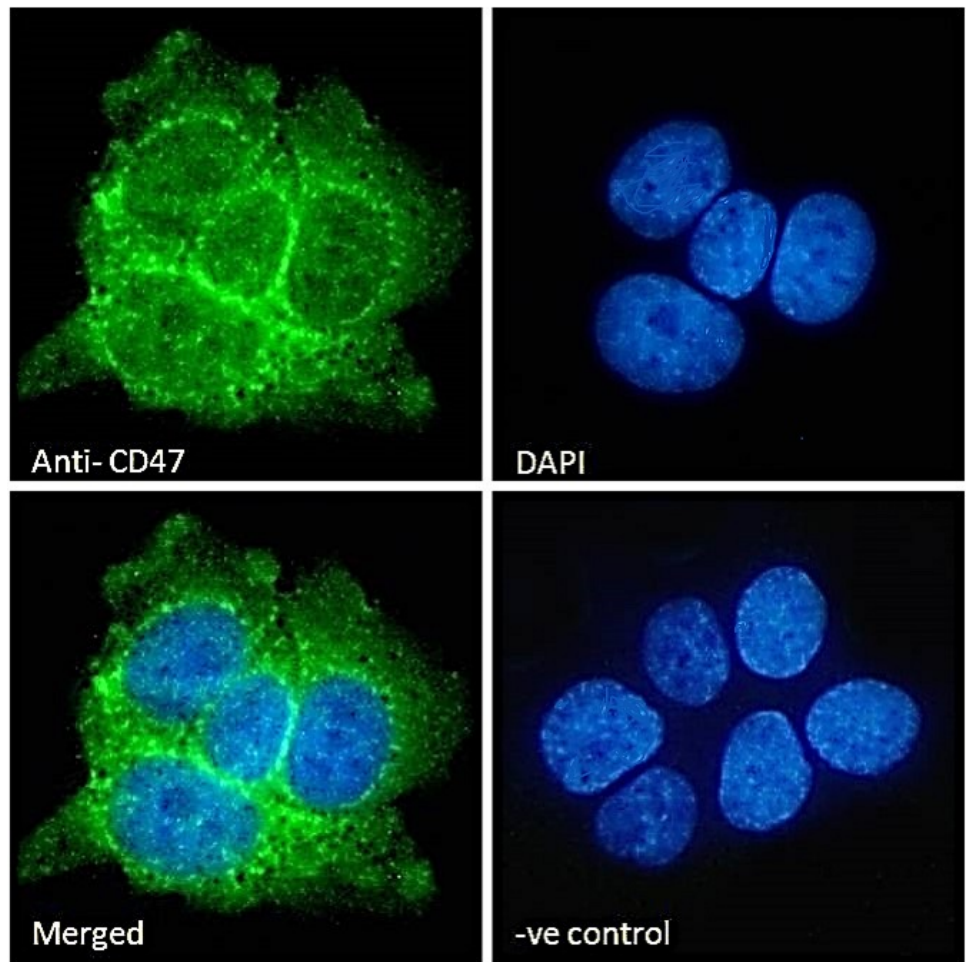
IHC: Paraffin embedded Human Brain (Cortex). Recommended concentration: 6-7µg/ml.

Immunofluorescence: Strong expression of the protein seen in the cytoplasm and membrane of A431 and THP-1 cells, and additionally in the nucleus of U2OS cells. Recommended concentration: 10µg/ml.

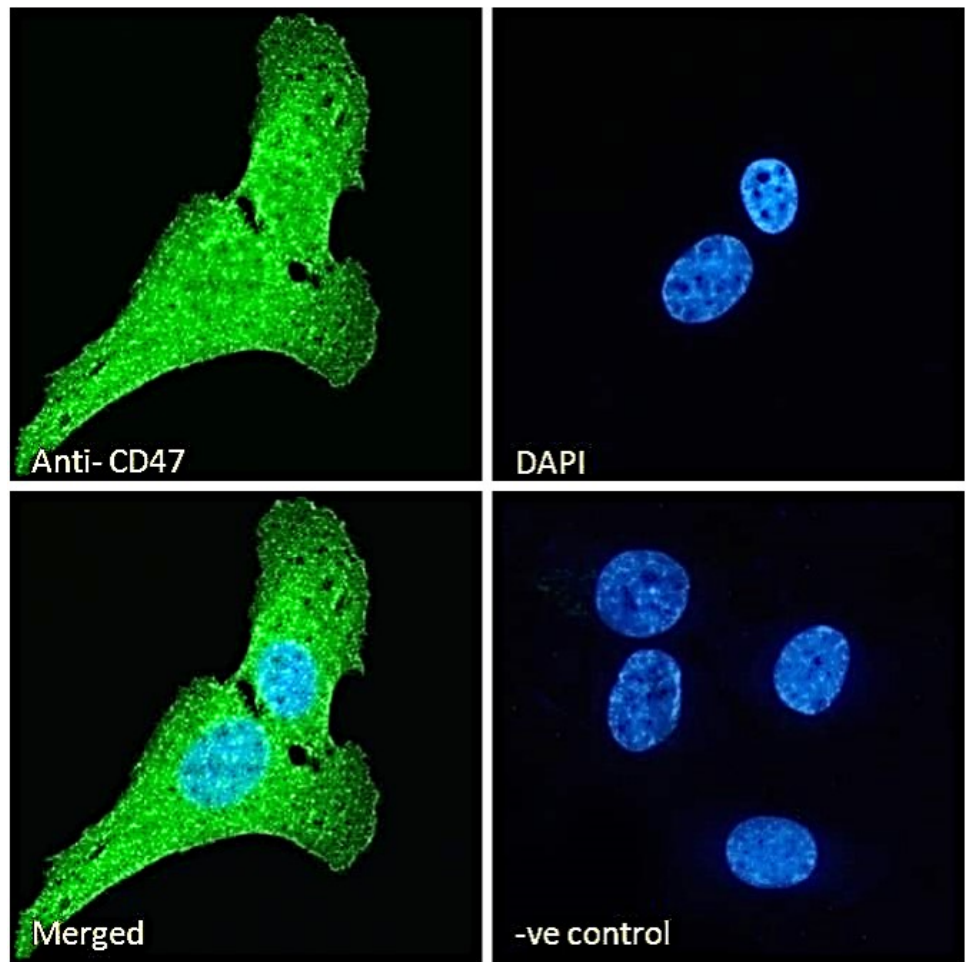
Species Reactivity

Tested: Human

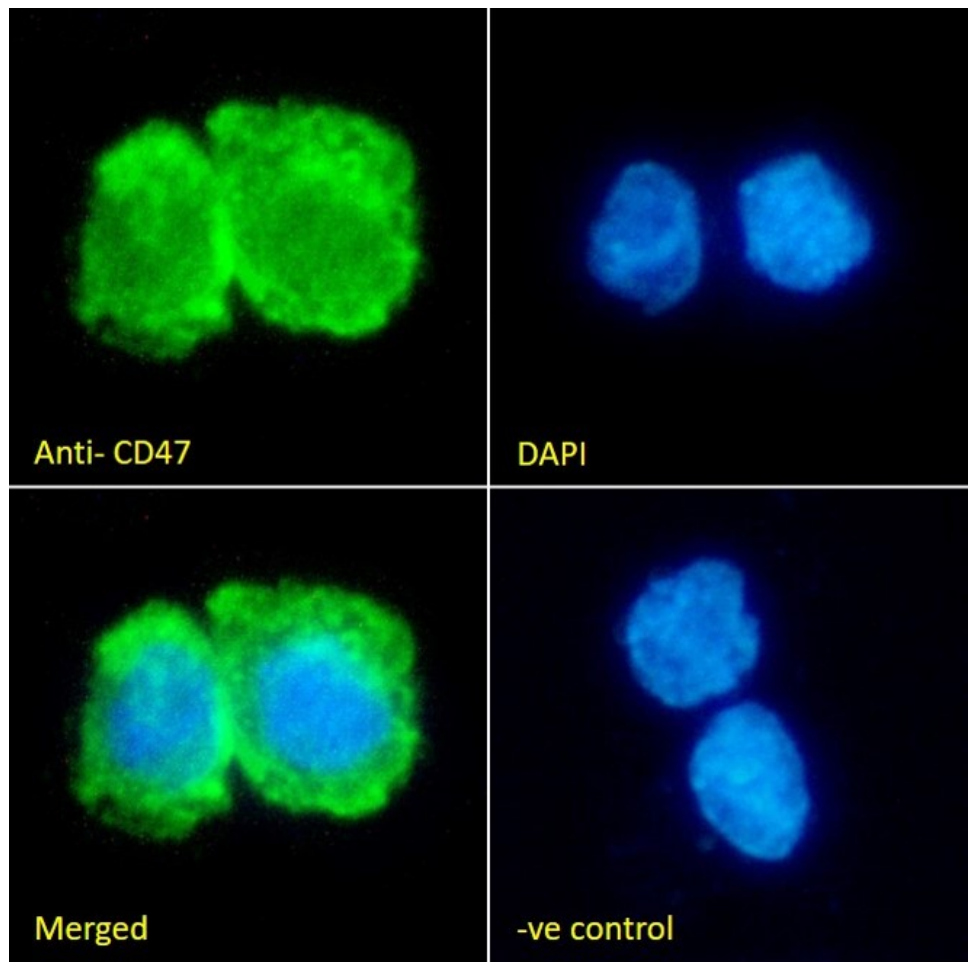
Expected from sequence similarity: Human, Dog



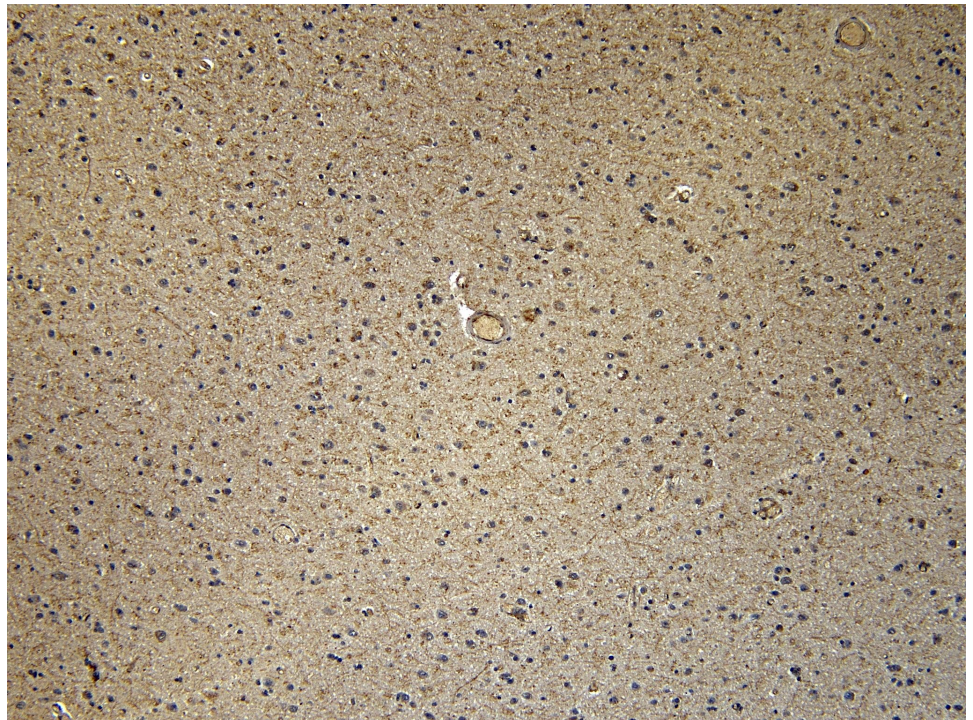
EB12501 Immunofluorescence analysis of paraformaldehyde fixed A431 cells, permeabilized with 0.15% Triton. Primary incubation 1hr (10ug/ml) followed by Alexa Fluor 488 secondary antibody (2ug/ml), showing cytoplasmic and membrane staining. The nuclear stain is DAPI (blue). Negative control: Unimmunized goat IgG (10ug/ml) followed by Alexa Fluor 488 secondary antibody (2ug/ml).



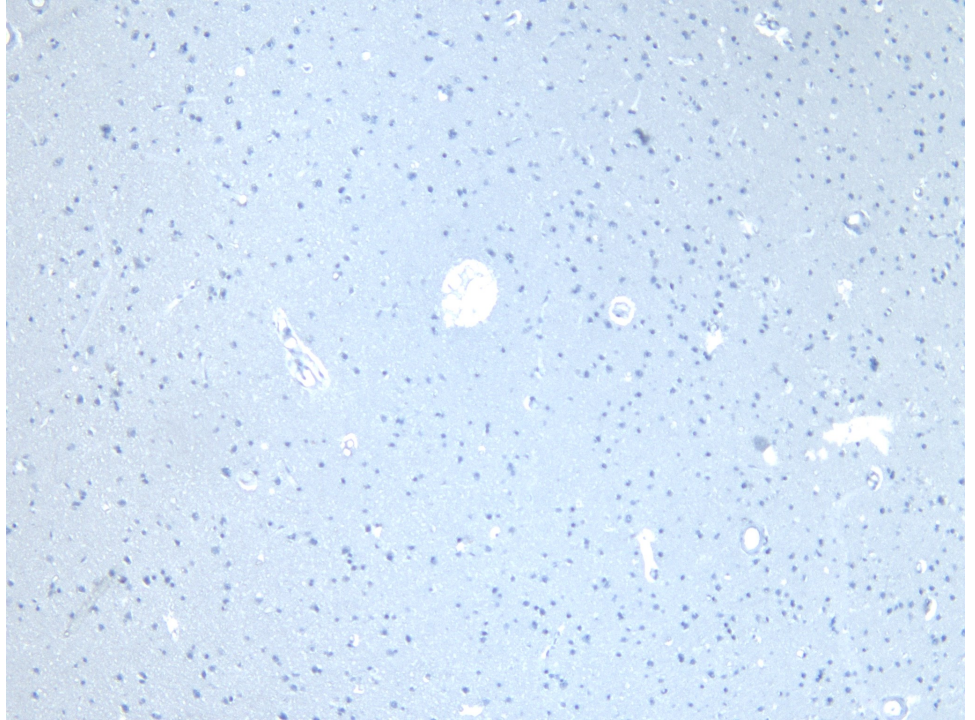
EB12501 Immunofluorescence analysis of paraformaldehyde fixed U2OS cells, permeabilized with 0.15% Triton. Primary incubation 1hr (10ug/ml) followed by Alexa Fluor 488 secondary antibody (2ug/ml), showing membrane, cytoplasmic and some nuclear staining. The nuclear stain is DAPI (blue). Negative control: Unimmunized goat IgG (10ug/ml) followed by Alexa Fluor 488 secondary antibody (2ug/ml).



EB12501 Immunofluorescence analysis of paraformaldehyde fixed THP-1 cells immobilized on ShifitTM coverslip, permeabilized with 0.15% Triton. Primary incubation 1hr (10ug/ml) followed by Alexa Fluor 488 secondary antibody (2ug/ml), showing membrane and cytoplasmic staining. The nuclear stain is DAPI (blue). Negative control: Unimmunized goat IgG (10ug/ml) followed by Alexa Fluor 488 secondary antibody (2ug/ml).



EB12501 (7µg/ml) staining of paraffin embedded Human Cortex. Heat induced antigen retrieval with citrate buffer pH 6, HRP-staining.



EB12501 Negative Control showing staining of paraffin embedded Human Cortex, with no primary antibody.