



## UK Office

### Everest Biotech Ltd

Cherwell Innovation Centre  
77 Heyford Park  
Upper Heyford  
Oxfordshire  
OX25 5HD  
UK

Enquiries:

[info@everestbiotech.com](mailto:info@everestbiotech.com)

Sales:

[sales@everestbiotech.com](mailto:sales@everestbiotech.com)

Tech support:

[support@everestbiotech.com](mailto:support@everestbiotech.com)

Tel: +44 (0)1869 238326

[www.everestbiotech.com](http://www.everestbiotech.com)

**Research Use Only. Not for  
diagnostic or therapeutic use.**

## EB12699 - Goat Anti-CD68 Antibody

Size: 100µg specific antibody in 200µl



### Target Protein

**Principal Names:** CD68, CD68 molecule, GP110, LAMP4, SCARD1, CD68 antigen, macrophage antigen CD68, macrosialin, scavenger receptor class D, member 1

**Official Symbol:** CD68

**Accession Number(s):** NP\_001242.2; NP\_001035148.1

**Human GeneID(s):** [968](#)

**Important Comments:** This antibody is expected to recognize both reported isoforms (NP\_001242.2; NP\_001035148.1).

### Immunogen

Peptide with sequence PNKTKVQGSCEGAH, from the internal region of the protein sequence according to NP\_001242.2; NP\_001035148.1.

Please note the [peptide](#) is available for sale.

### Purification and Storage

Purified from goat serum by ammonium sulphate precipitation followed by antigen affinity chromatography using the immunizing peptide.

Supplied at 0.5 mg/ml in Tris saline, 0.02% sodium azide, pH7.3 with 0.5% bovine serum albumin.

Aliquot and store at -20°C. Minimize freezing and thawing.

### Applications Tested

**Peptide ELISA:** antibody detection limit dilution 1:128000.

**Western blot:** Approx. 100-110kDa band observed in lysates of cell line U937 and in preliminary testing of THP-1 cell lysate (calculated MW of 37.4kDa according to NP\_001242.2). The observed molecular weight is routinely reported, and corresponds to the glycosylated form. Recommended concentration: 1-3µg/ml. Primary incubation 1 hour at room temperature. **Positive Control:** A batch specific positive control lysate is available for this product. Please contact [Sales@everestbiotech.com](mailto:Sales@everestbiotech.com) for availability.

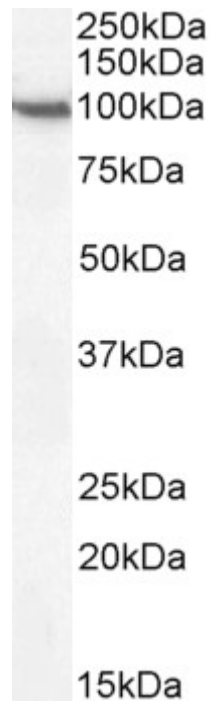
**IHC:** Paraffin embedded Human Spleen. Recommended concentration: 5-6µg/ml.

**Flow Cytometry:** Flow cytometric analysis of U937 cells. Recommended concentration: 10ug/ml.

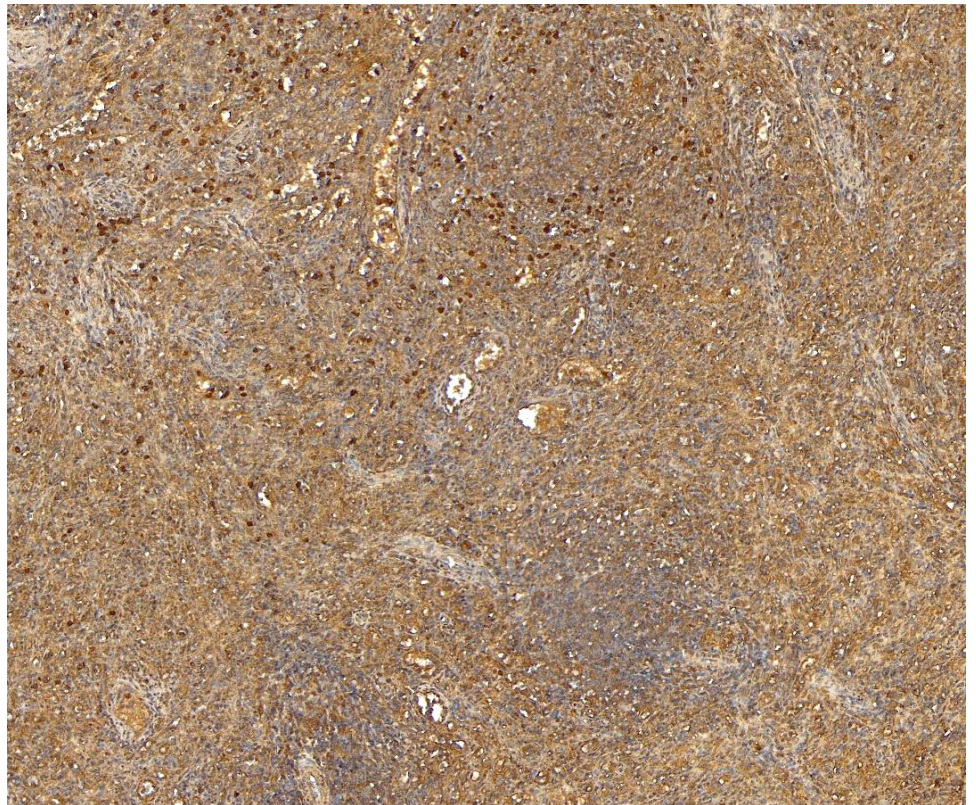
### Species Reactivity

**Tested:** Human

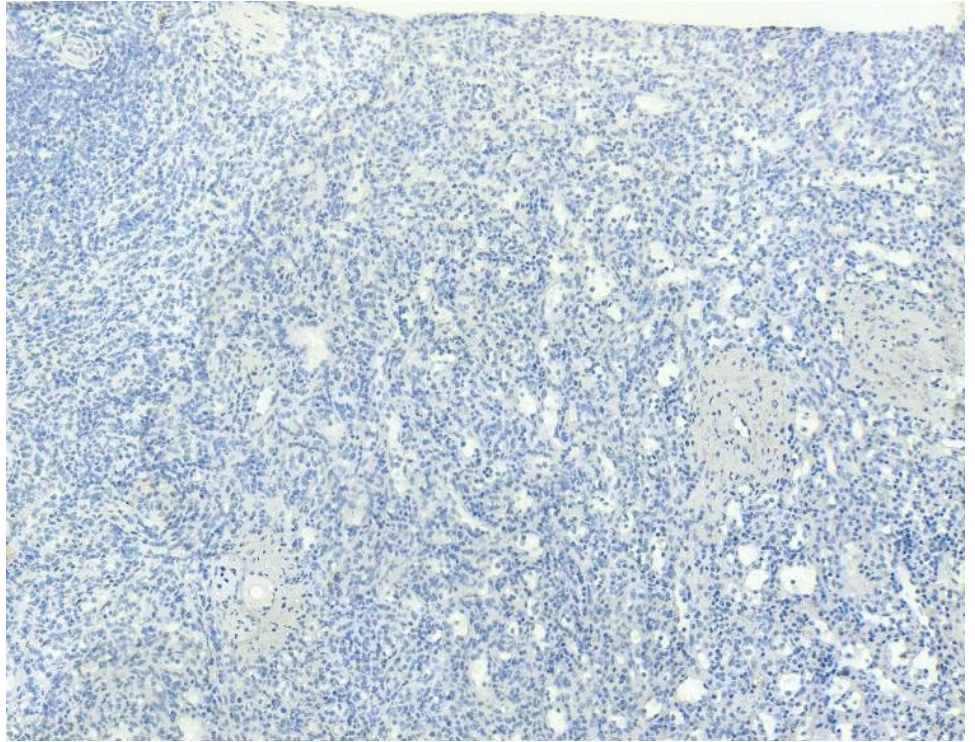
**Expected from sequence similarity:** Human



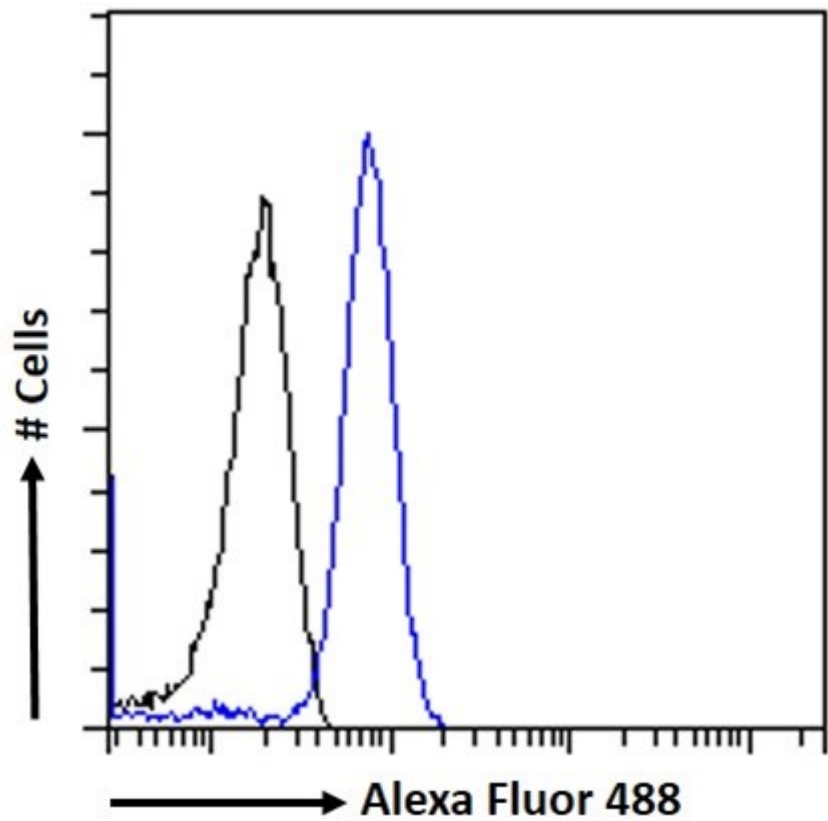
EB12699 (2 $\mu$ g/ml) staining of U937 cell lysate (35 $\mu$ g protein in RIPA buffer). Detected by chemiluminescence.



EB12699 (5 $\mu$ g/ml) staining of paraffin embedded Human Spleen. Heat induced antigen retrieval with citrate buffer pH 6, HRP-staining.



EB12699 Negative Control showing staining of paraffin embedded Human Spleen, with no primary antibody.



EB12699 Flow cytometric analysis of paraformaldehyde fixed U937 cells (blue line), permeabilized with 0.5% Triton. Primary incubation 1hr (10ug/ml) followed by Alexa Fluor 488 secondary antibody (1ug/ml). IgG control: Unimmunized goat IgG (black line) followed by Alexa Fluor 488 secondary antibody.