



## UK Office

### Everest Biotech Ltd

Cherwell Innovation Centre  
77 Heyford Park  
Upper Heyford  
Oxfordshire  
OX25 5HD  
UK

Enquiries:

[info@everestbiotech.com](mailto:info@everestbiotech.com)

Sales:

[sales@everestbiotech.com](mailto:sales@everestbiotech.com)

Tech support:

[support@everestbiotech.com](mailto:support@everestbiotech.com)

Tel: +44 (0)1869 238326

Fax: +44 (0)1869 238327

## US Office

### Everest Biotech c/o Abcore

405 Maple Street, Suite A106  
Ramona,  
CA 92065  
USA

Inquiries:

[info@everestbiotech.com](mailto:info@everestbiotech.com)

Sales:

[usasales@everestbiotech.com](mailto:usasales@everestbiotech.com)

Tech support:

[support@everestbiotech.com](mailto:support@everestbiotech.com)

Tel: 888-320-4628 (toll-free)

Fax: 888-841-9041

[www.everestbiotech.com](http://www.everestbiotech.com)

**Research Use Only. Not for  
diagnostic or therapeutic use.**

## EB11161 - Goat Anti-CD7 (aa132-146) Antibody

Size: 100µg specific antibody in 200µl



### Target Protein

**Principal Names:** CD7 antigen (p41), CD7 molecule, GP40, LEU-9, p41 protein, T-cell antigen CD7, T-cell leukemia antigen, T-cell surface antigen Leu-9, Tp40, TP41, CD7

**Official Symbol:** CD7

**Accession Number(s):** NP\_006128.1

**Human GeneID(s):** [924](#)

**Important Comments:** The immunizing peptide corresponds to a part of the extracellular domain.

### Immunogen

Peptide with sequence TEEQSQGWHRCSAP, from the internal region of the protein sequence according to NP\_006128.1.

Please note the [peptide](#) is available for sale.

### Purification and Storage

Purified from goat serum by ammonium sulphate precipitation followed by antigen affinity chromatography using the immunizing peptide.

Supplied at 0.5 mg/ml in Tris saline, 0.02% sodium azide, pH7.3 with 0.5% bovine serum albumin.

Aliquot and store at -20°C. Minimize freezing and thawing.

### Applications Tested

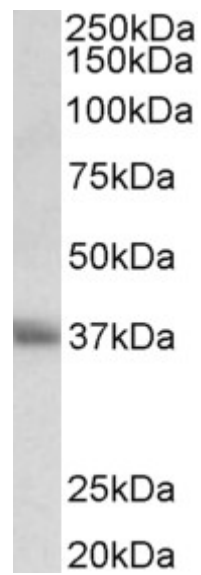
**Peptide ELISA:** antibody detection limit dilution 1:32000.

**Western blot:** Approx 37kDa band observed in Human Thymus lysates (calculated MW of 25.4kDa according to NP\_006128.1). We do note that CD7 is a glycoprotein which makes a higher size band to be expected. This molecular weight is routinely observed by other sources. Recommended concentration: 0.5-2µg/ml.

### Species Reactivity

**Tested:** Human

**Expected from sequence similarity:** Human



EB11161 (0.5µg/ml) staining of Human Thymus lysate (35µg protein in RIPA buffer). Primary incubation was 1 hour. Detected by chemiluminescence.