

## UK Office

### Everest Biotech Ltd

Cherwell Innovation Centre  
77 Heyford Park  
Upper Heyford  
Oxfordshire  
OX25 5HD  
UK

Enquiries:

[info@everestbiotech.com](mailto:info@everestbiotech.com)

Sales:

[sales@everestbiotech.com](mailto:sales@everestbiotech.com)

Tech support:

[support@everestbiotech.com](mailto:support@everestbiotech.com)

Tel: +44 (0)1869 238326

[www.everestbiotech.com](http://www.everestbiotech.com)

**Research Use Only. Not for  
diagnostic or therapeutic use.**

## EB12551 - Goat Anti-CD74 (aa159-171) Antibody

Size: 100µg specific antibody in 200µl



### Target Protein

**Principal Names:** CD74, DHLAG, HLADG, Ia-GAMMA, CD74 molecule, major histocompatibility complex, class II invariant chain, CD74 antigen, CD74 antigen (invariant polypeptide of major histocompatibility complex, class II antigen-associated), HLA-DR-gamma, Ia-associated invariant chain, MHC HLA-DR gamma chain, gamma chain of class II antigens

**Official Symbol:** CD74

**Accession Number(s):** NP\_001020330.1; NP\_004346.1; NP\_001351012.1; : NP\_001351013.1

**Human GeneID(s):** [972](#)

**Important Comments:** This antibody is expected to recognize all reported isoforms.

### Immunogen

Peptide with sequence C-KGSFPENLRHLKN, from the internal region of the protein sequence according to NP\_001020330.1; NP\_004346.1; NP\_001351012.1; : NP\_001351013.1.

Please note the [peptide](#) is available for sale.

### Purification and Storage

Purified from goat serum by ammonium sulphate precipitation followed by antigen affinity chromatography using the immunizing peptide.

Supplied at 0.5 mg/ml in Tris saline, 0.02% sodium azide, pH7.3 with 0.5% bovine serum albumin.

Aliquot and store at -20°C. Minimize freezing and thawing.

### Applications Tested

**Peptide ELISA:** antibody detection limit dilution 1:128000.

**Western blot:** This antibody was observed to recognize variations of bands at approx. 26kDa, 30kDa, 35kDa and 70kDa in Human Duodenum and Lung lysates (calculated MW of 26.4kDa according to NP\_004346.1 and 33.5kDa according to NP\_001020330.1. All bands were blocked by incubation with the immunizing peptide and have been observed by other commercial sources. Recommended concentration: 0.5-1µg/ml. Primary incubation 1 hour at room temperature.

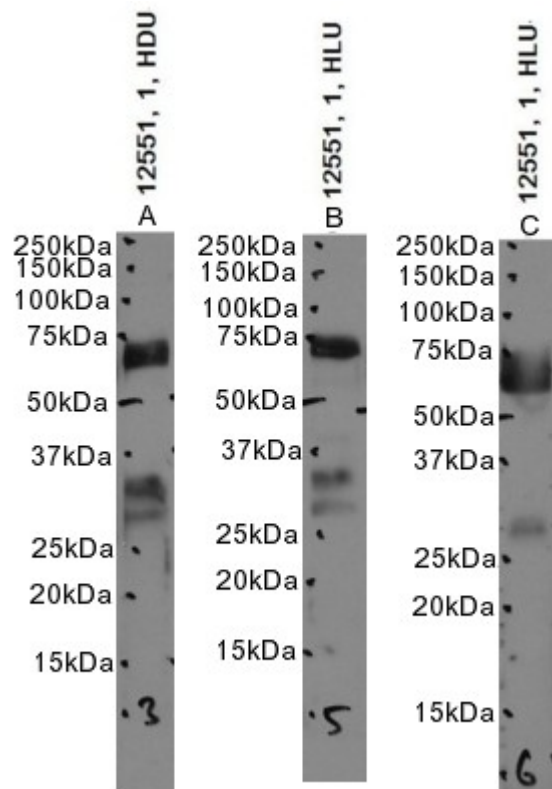
**IHC:** Paraffin embedded Human Spleen. Recommended concentration: 5µg/ml

**Flow Cytometry:** Flow cytometric analysis of Caco-2 cells. Recommended concentration: 10ug/ml.

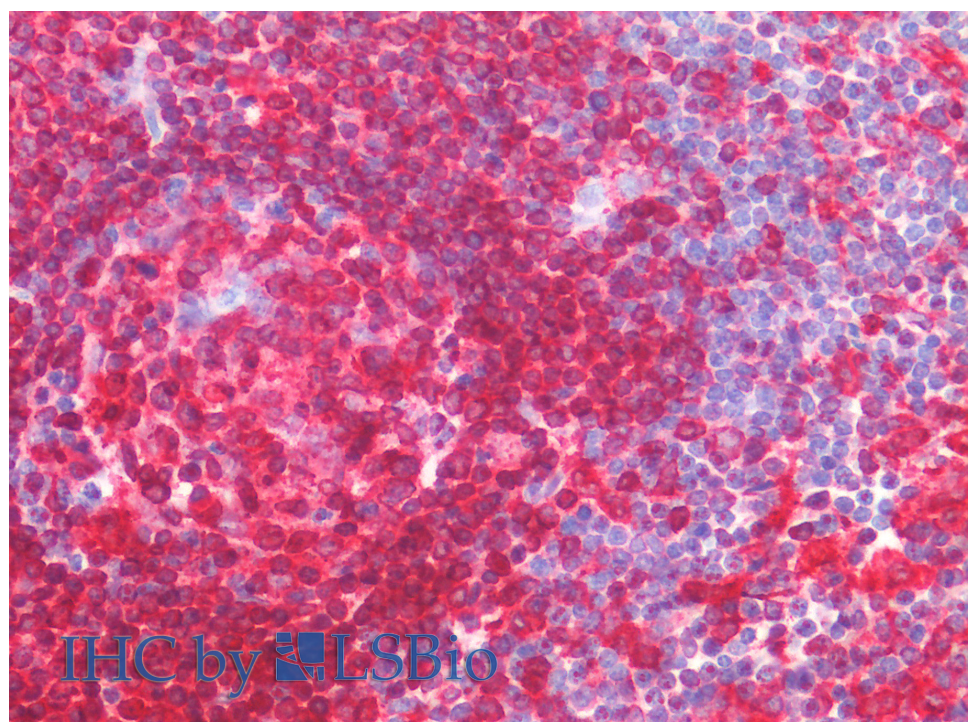
### Species Reactivity

**Tested:** Human

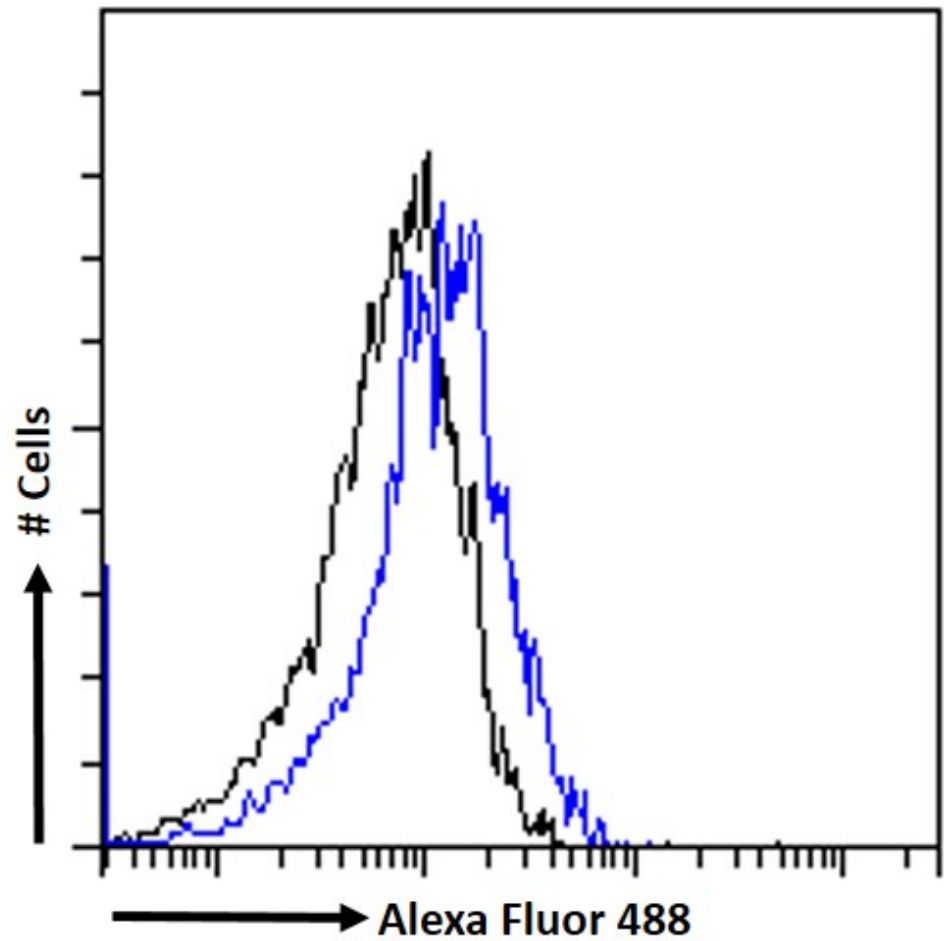
**Expected from sequence similarity:** Human



EB12551 optimised QC. Primary incubation 1 hour at room temperature.  
 Images A, B, C: Human Duodenum lysate, Human Lung lysate 1 and Human Lung lysate 2 at primary Ab concentration 1µg/ml. (Loaded 35µg protein in RIPA buffer, per lane).  
 Detected by chemiluminescence.



EB12551 (5µg/ml) staining of paraffin embedded Human Spleen. Steamed antigen retrieval with citrate buffer Ph 6, AP-staining.



EB12551 Flow cytometric analysis of paraformaldehyde fixed CaCo2 cells (blue line) permeabilized with 0.5% Triton. Primary incubation 1hr (10ug/ml) followed by Alexa Fluor 488® conjugated secondary antibody (1ug/ml). IgG control: Unimmunized goat IgG (black line) followed by Alexa Fluor 488 secondary antibody.