



UK Office

Everest Biotech Ltd

Cherwell Innovation Centre
77 Heyford Park
Upper Heyford
Oxfordshire
OX25 5HD
UK

Enquiries:

info@everestbiotech.com

Sales:

sales@everestbiotech.com

Tech support:

support@everestbiotech.com

Tel: +44 (0)1869 238326

www.everestbiotech.com

**Research Use Only. Not for
diagnostic or therapeutic use.**

EB09701 - Goat Anti-CD80 Antibody

Size: 100µg specific antibody in 200µl



Target Protein

Principal Names: CD80, CD80 molecule, CD28LG, CD28LG1, LAB7, B-lymphocyte activation antigen B7, CD80 antigen, CD80 antigen (CD28 antigen ligand 1, B7-1 antigen), costimulatory factor CD80, costimulatory molecule variant IgV-CD80

Official Symbol: CD80

Accession Number(s): NP_005182.1

Human GeneID(s): [941](#)

Immunogen

Peptide with sequence C-HLRVNQTFNWNTTK, from the internal region of the protein sequence according to NP_005182.1.

Please note the [peptide](#) is available for sale.

Purification and Storage

Purified from goat serum by ammonium sulphate precipitation followed by antigen affinity chromatography using the immunizing peptide.

Supplied at 0.5 mg/ml in Tris saline, 0.02% sodium azide, pH7.3 with 0.5% bovine serum albumin.

Aliquot and store at -20°C. Minimize freezing and thawing.

Applications Tested

Peptide ELISA: antibody detection limit dilution 1:4000.

Western blot: Approx. 65kDa band observed in lysates of cell lines K562 and U937, and approx. 60kDa in Human Lymph Node, Bone Marrow and Spleen lysates (calculated MW of 33.0kDa according to NP_005182.1). These molecular weights are routinely observed by other sources. Recommended concentration: 0.5-3µg/ml. Primary incubation 1 hour at room temperature.

Positive Control: A batch specific positive control lysate is available for this product. Please contact Sales@everestbiotech.com for availability.

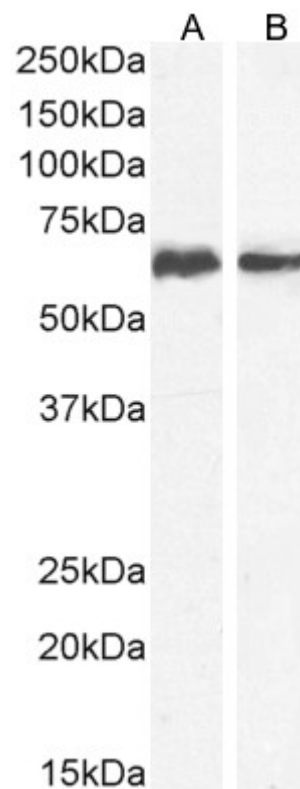
IHC: Paraffin embedded Human Spleen and Tonsil. Recommended concentration: 4-5µg/ml.

Flow Cytometry: Flow cytometric analysis of U937 cells. Recommended concentration: 10ug/ml.

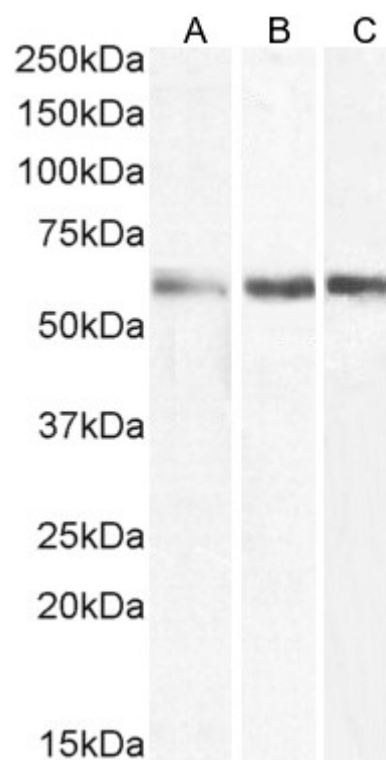
Species Reactivity

Tested: Human

Expected from sequence similarity: Human



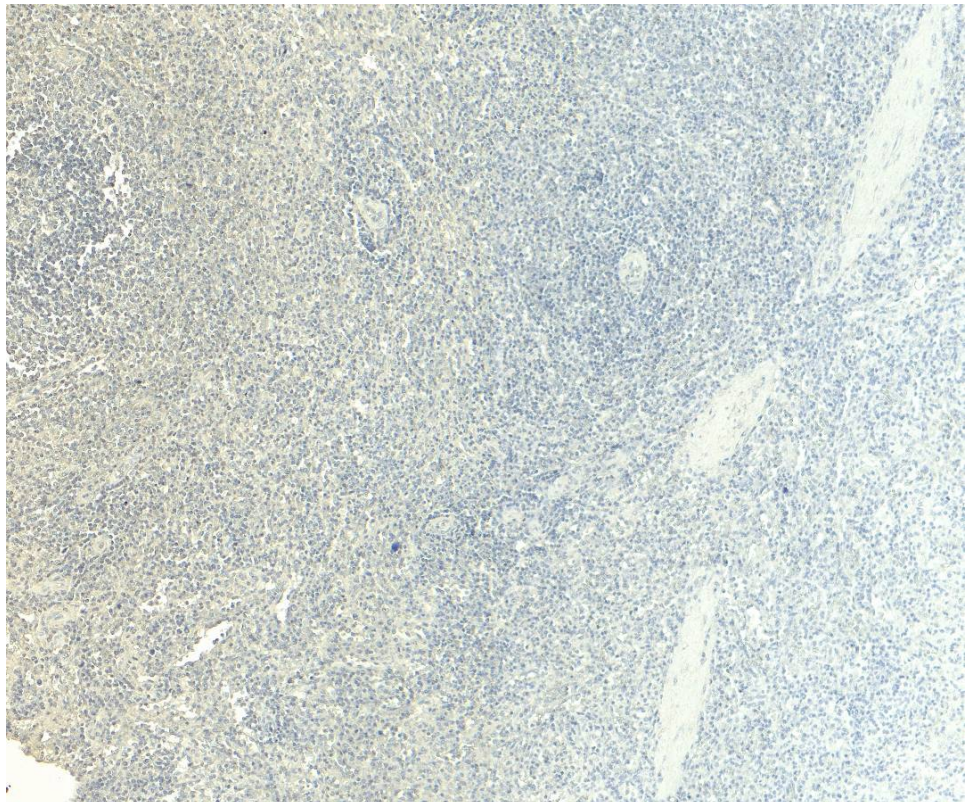
EB09701 (0.5 μ g/ml) staining of K562 (A) and U937 (B) cell lysate (35 μ g protein in RIPA buffer). Detected by chemiluminescence.



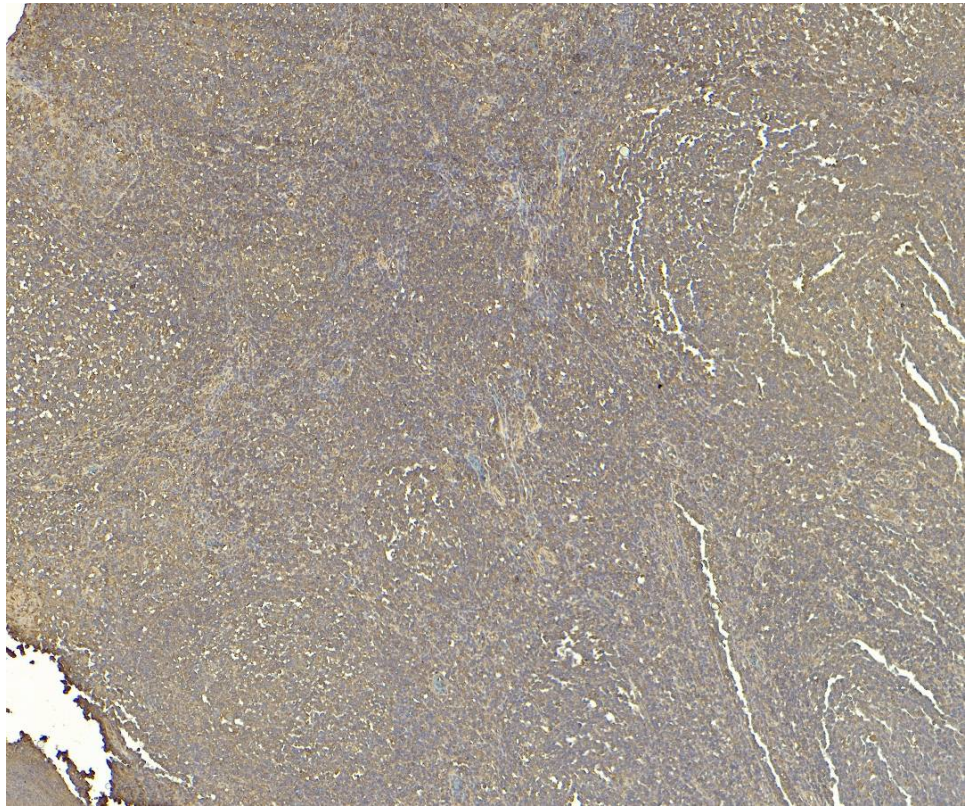
EB09701 (3 μ g/ml) staining of Human Lymph Node (A), Bone Marrow (B) and (1.5 μ g/ml) Spleen (C) lysate (35 μ g protein in RIPA buffer). Detected by chemiluminescence.



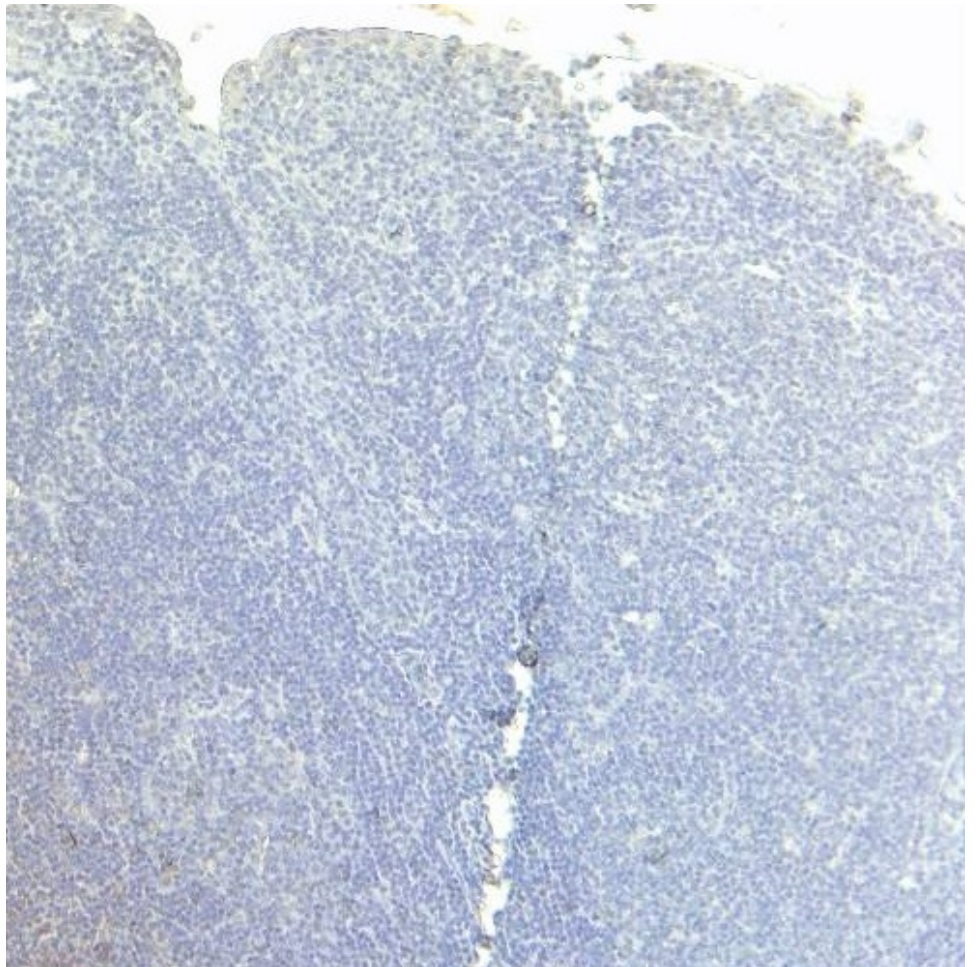
EB09701 (6µg/ml) staining of paraffin embedded Human Spleen. Heat induced antigen retrieval with citrate buffer pH 6, HRP-staining.



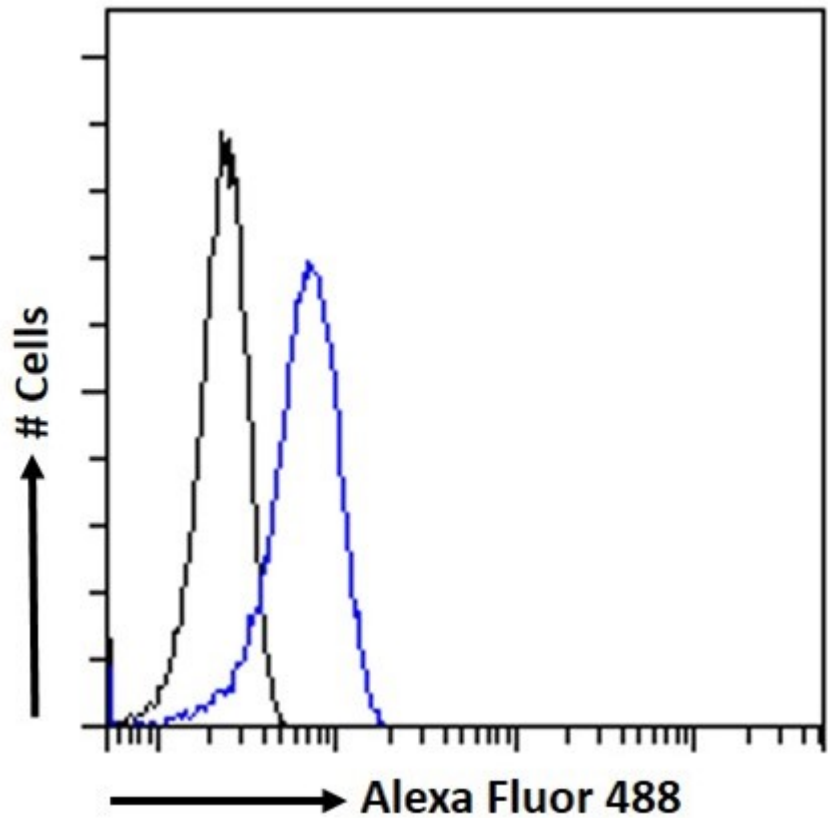
EB09701 Negative Control showing staining of paraffin embedded Human Spleen, with no primary antibody.



EB09701 (5µg/ml) staining of paraffin embedded Human Tonsil. Heat induced antigen retrieval with citrate buffer pH 6, HRP-staining.



EB09701 Negative Control showing staining of paraffin embedded Human Tonsil, with no primary antibody.



EB09701 Flow cytometric analysis of paraformaldehyde fixed U937 cells (blue line), permeabilized with 0.5% Triton. Primary incubation 1hr (10ug/ml) followed by Alexa Fluor 488 secondary antibody (1ug/ml). IgG control: Unimmunized goat IgG (black line) followed by Alexa Fluor 488 secondary antibody.