



## UK Office

### Everest Biotech Ltd

Cherwell Innovation Centre  
77 Heyford Park  
Upper Heyford  
Oxfordshire  
OX25 5HD  
UK

Enquiries:

[info@everestbiotech.com](mailto:info@everestbiotech.com)

Sales:

[sales@everestbiotech.com](mailto:sales@everestbiotech.com)

Tech support:

[support@everestbiotech.com](mailto:support@everestbiotech.com)

Tel: +44 (0)1869 238326

Fax: +44 (0)1869 238327

## US Office

### Everest Biotech c/o Abcore

405 Maple Street, Suite A106  
Ramona,  
CA 92065  
USA

Inquiries:

[info@everestbiotech.com](mailto:info@everestbiotech.com)

Sales:

[usasales@everestbiotech.com](mailto:usasales@everestbiotech.com)

Tech support:

[support@everestbiotech.com](mailto:support@everestbiotech.com)

Tel: 888-320-4628 (toll-free)

Fax: 888-841-9041

[www.everestbiotech.com](http://www.everestbiotech.com)

**Research Use Only. Not for  
diagnostic or therapeutic use.**

## EB09701 - Goat Anti-CD80 Antibody

Size: 100µg specific antibody in 200µl



### Target Protein

**Principal Names:** CD80, CD80 molecule, CD28LG, CD28LG1, LAB7, B-lymphocyte activation antigen B7, CD80 antigen, CD80 antigen (CD28 antigen ligand 1, B7-1 antigen), costimulatory factor CD80, costimulatory molecule variant IgV-CD80

**Official Symbol:** CD80

**Accession Number(s):** NP\_005182.1

**Human GeneID(s):** [941](#)

### Immunogen

Peptide with sequence C-HLRVNQTFNWNTTK, from the internal region of the protein sequence according to NP\_005182.1.

Please note the [peptide](#) is available for sale.

### Purification and Storage

Purified from goat serum by ammonium sulphate precipitation followed by antigen affinity chromatography using the immunizing peptide.

Supplied at 0.5 mg/ml in Tris saline, 0.02% sodium azide, pH7.3 with 0.5% bovine serum albumin.

Aliquot and store at -20°C. Minimize freezing and thawing.

### Applications Tested

**Peptide ELISA:** antibody detection limit dilution 1:4000.

**Western blot:** Approx. 65kDa band observed in lysates of cell lines K562 and U937, and approx. 60kDa in Human Lymph Node, Bone Marrow and Spleen lysates (calculated MW of 33.0kDa according to NP\_005182.1). These molecular weights are routinely observed by other sources. Recommended concentration: 0.5-3µg/ml. Primary incubation 1 hour at room temperature.

**Positive Control:** A batch specific positive control lysate is available for this product.

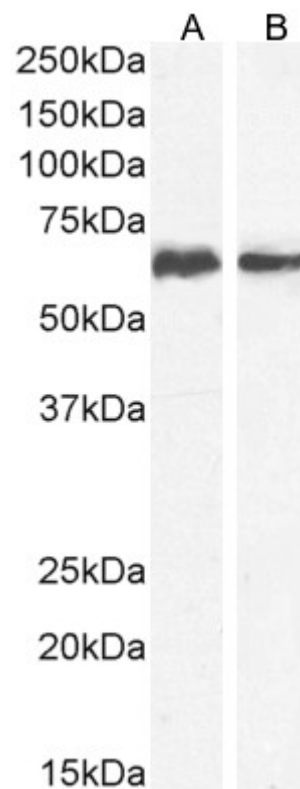
Please contact [Sales@everestbiotech.com](mailto:Sales@everestbiotech.com) for availability.

**Flow Cytometry:** Flow cytometric analysis of U937 cells. Recommended concentration: 10ug/ml.

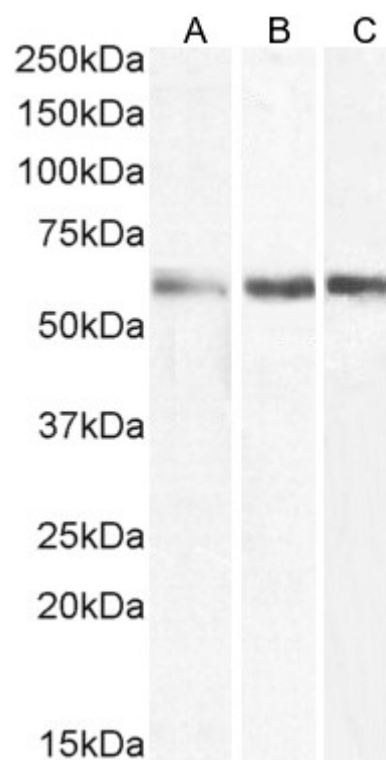
### Species Reactivity

**Tested:** Human

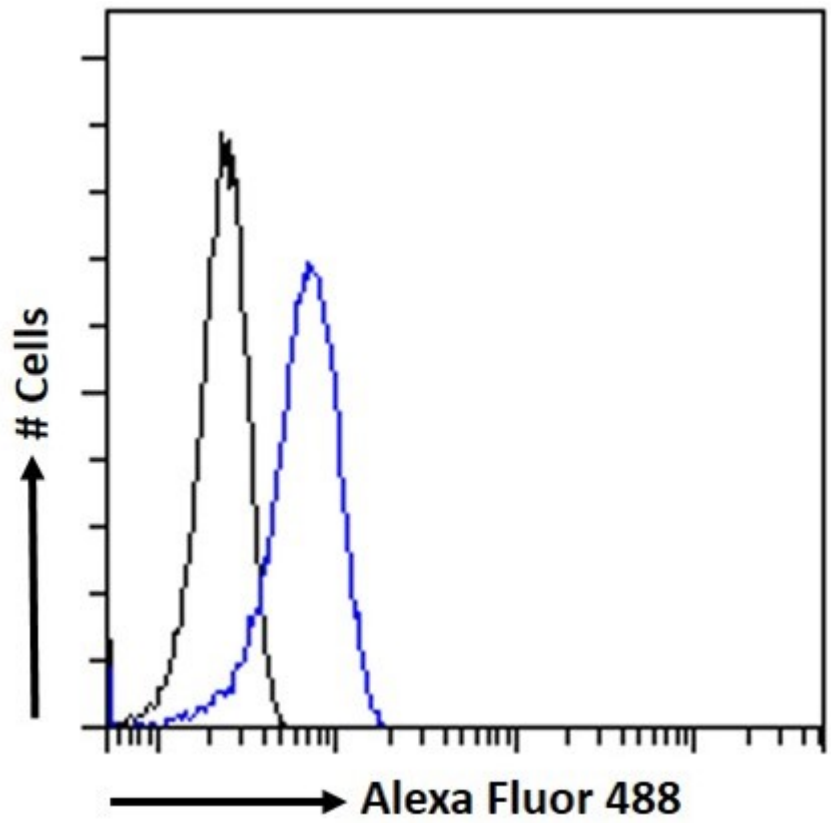
**Expected from sequence similarity:** Human



EB09701 (0.5 $\mu$ g/ml) staining of K562 (A) and U937 (B) cell lysate (35 $\mu$ g protein in RIPA buffer). Detected by chemiluminescence.



EB09701 (3 $\mu$ g/ml) staining of Human Lymph Node (A), Bone Marrow (B) and (1.5 $\mu$ g/ml) Spleen (C) lysate (35 $\mu$ g protein in RIPA buffer). Detected by chemiluminescence.



EB09701 Flow cytometric analysis of paraformaldehyde fixed U937 cells (blue line), permeabilized with 0.5% Triton. Primary incubation 1hr (10ug/ml) followed by Alexa Fluor 488 secondary antibody (1ug/ml). IgG control: Unimmunized goat IgG (black line) followed by Alexa Fluor 488 secondary antibody.